

I have tried to replicate this issue and succeeded!
Next, I will share my notes for further testing or investigation.

Problem description

Deleting empty spaces from the Sender textbox in Envelope window without closing first the application OpenOffice will crash Writer.

If you use the Insert->Envelope and get an envelope to run (without modifying the Sender blank spaces) and you close the OpenOffice application and restart it, the bug no longer appears.

Configuration

- Operating System: Windows 10 Pro x64
- OpenOffice version 4.1.2. and 4.1.3

Windows edition	
Windows 10 Pro	
© 2016 Microsoft Corporation. All rights reserved.	
System	
Processor:	Intel(R) Core(TM) i3 CPU M 370 @ 2.40GHz 2.40 GHz
Installed memory (RAM):	6.00 GB (5.80 GB usable)
System type:	64-bit Operating System, x64-based processor
Pen and Touch:	No Pen or Touch Input is available for this Display

Steps to reproduce

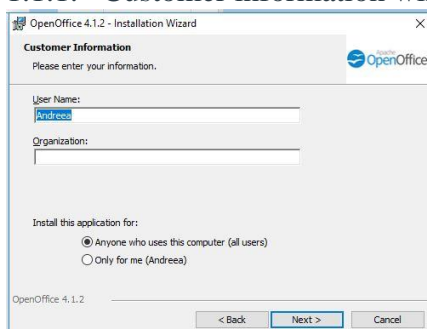
Where to start to replicate the bug?

Configuration of the machine where the test is executed: Windows 10

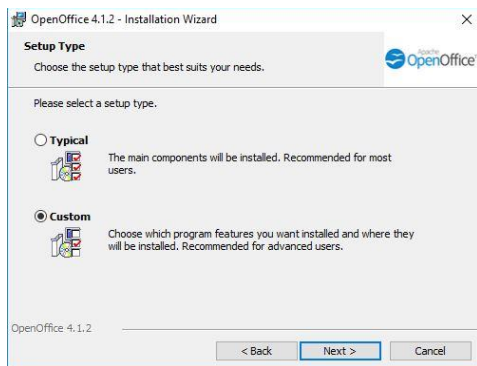
Installation version: Apache_OpenOffice_4.1.2_Win_x86_install_en_US

1.1.Installation steps:

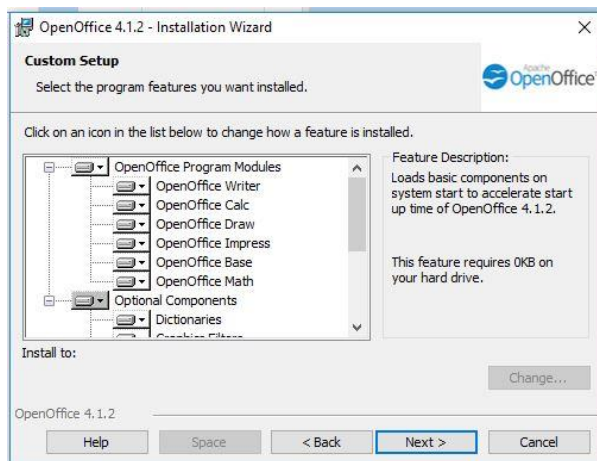
1.1.1. Customer information window



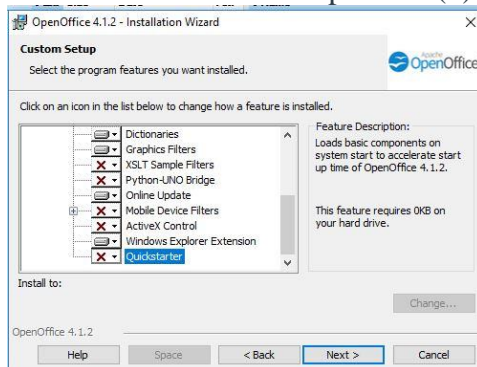
1.1.2. Custom installation



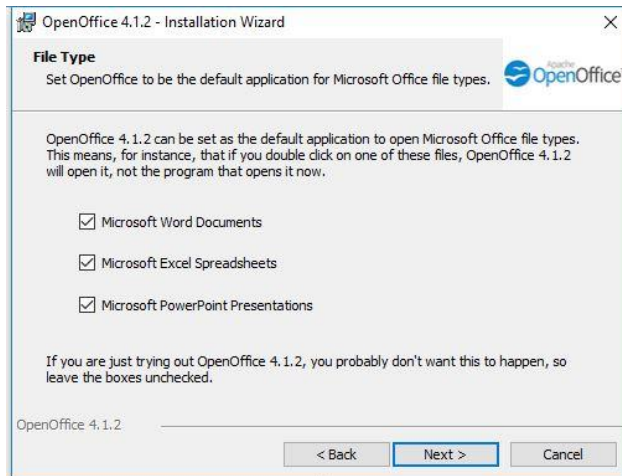
1.1.3. Custom install – components (a)



1.1.4. Custom install – components (b)



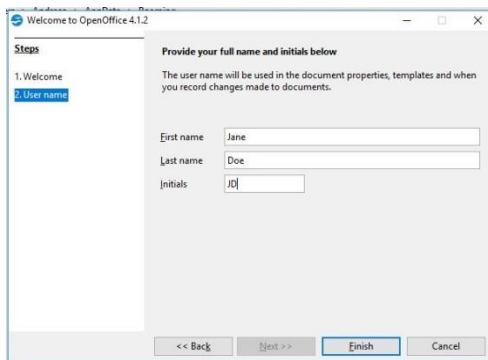
1.1.5. File type



What to do and what you will see?

1.2.Replication sequence

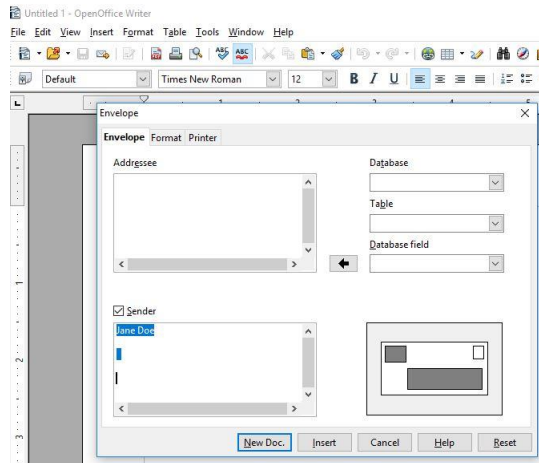
1.2.1. Step: Specifying user name



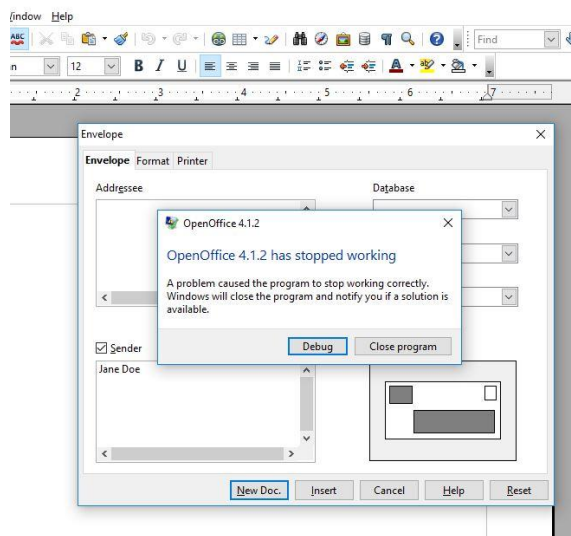
1.2.2. Step: Open OpenOffice application, TextDocument



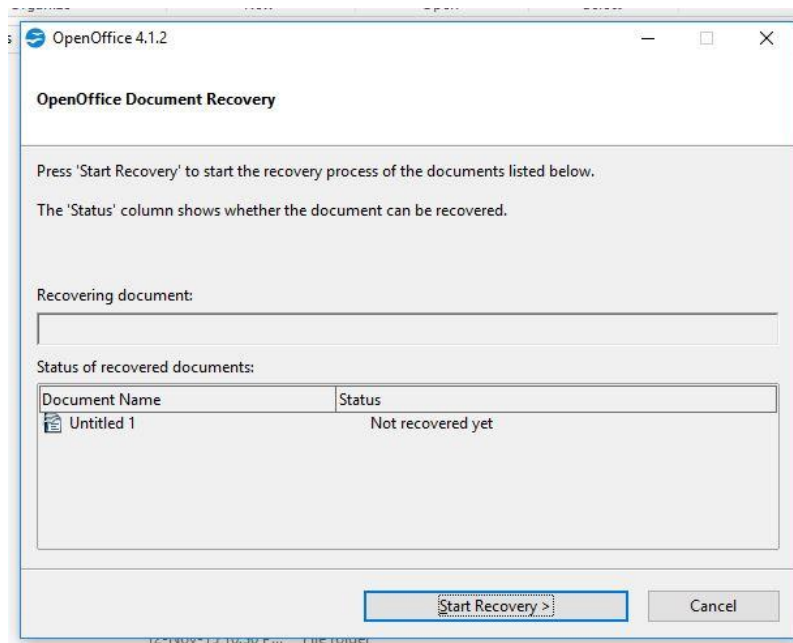
1.2.3. Step: Menu Insert, submenu Envelope



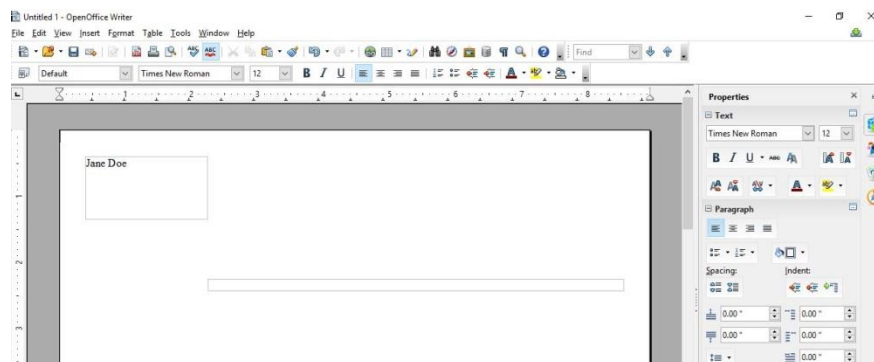
1.2.4. Step: Bug revealing by deleting blank spaces from the Sender textbox



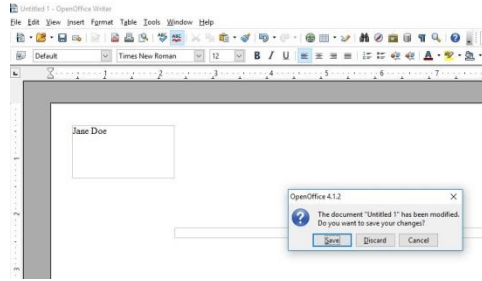
1.2.5. Step: recovering when restarting the application



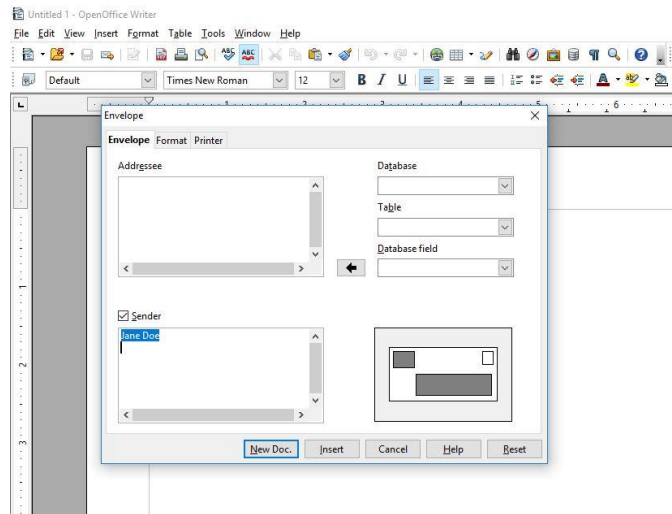
1.2.6. Step: Meniu Insert, submeniu Envelope, no modification to the Sender textbox, click button Insert. The result is in the next figure.



1.2.7. Step: Closing the envelope by not saving the envelope **and Closing the Application OpenOffice**



1.2.8. Step: Eliminating the symptom for the context of the Envelope by deleting the spaces from the Sender textbox



1.3. Files to use to replicate the symptom

See the two files attached to this report

- NoModification_FileToReplicateBugFrom.odt
- NoModification_FileWithNoBugAnymore.odt

2. Follow-up tests

The symptom is that without closing the application at least once the Insert->Envelope functionality (i.e. deleting the blank spaces from the Sender textbox) will misbehave.

I have chosen the followings follow-up tests:

- Isolate – find the shortest sequence of simple actions that demonstrate the problem
 - Vary your behavior (VB)

- VB_01=VaryBehavior_01 = Steps from Replication sequence: 2.2.1, 2.2.2, 2.2.3, 2.2.3. several modifications on Sender/Address textbox, 2.2.4
 - VB_01=VaryBehavior_02 = Steps from Replication sequence: 2.2.1.,2.2.2.,2.2.3. no modification on Sender/Address textbox, 2.2.4
 - VB_03= VaryBehavior_01 = but before 2.2.4, Save the envelope
 - VB_04=VaryBehavior_02 = but before 2.2.4, Save the envelope
 - VB_05= VaryBehavior_01 = but before 2.2.4, close the Window
 - VB_06=VaryBehavior_02 = but before 2.2.4, close the Window
 - VB_07=VaryBehavior_01 = but before 2.2.4, close the Application OpenOffice (the bug does not appear any more)
 - VB_08=VaryBehavior_02 = but before 2.2.4, close the Application OpenOffice(the bug does not appear any more)
 - VB_09=any of the above but in combination with other functionalities (for example first writing text in the TextDocument and then using the Envelope functionality
- Generalize – the same failure can be reached in several ways
 - As seen above, the failure can be reached in several ways:
 - Modification/no modification in the Sender/Address textboxes
 - Save/not save the envelope
 - Close/Open the Window
 - Close/Open the Application
- Externalize – what is the impact of the user?
 - Remark: For an unexperienced user, for the first time that he uses the Envelope functionality (the first functionality used when opening the application OpenOffice) and when deleting the spaces in the Sender textbox, the bug appears. However, he/she uses the application before for other functionalities and closes

and reopens the application, then the Envelope functionality will no longer have the black spaces problem.

- Neutral tone – reports that are annoying to read are more likely to be rejected

3. Speculation and evaluation

Remark: the bug reporter provided a youtube video for the bug-replication.

Hypothesis for the underlying fault: only after inserting an envelope (clicking the Insert button in the Envelope window) and close the application OpenOffice the bug is no longer active, thus "something" is done/executed when an envelope is correctly created and application closed.

- Is the information credible/useful?
 - This could signal to the developer to look in this part of source code related to closing the application.
- Facts to support the evaluation
 - The tests provided in the Follow-up testing support the evaluation. The behavior of the bug is reproduced.
- Importance of the problem to the customer
 - Because the bug reveals the first time the user uses the Envelop functionality, the customer may think that the application is not reliable and not working properly and may not try for a next try. A further serious effect could be that the user stops using the OpenOffice for other functionalities also.

Remark 1: I have use both cases (1. Setup and 2. Delete the AppData/Roming/OpenOffice directory) to have the system in the Fresh installation state when applying the steps of the test. The behavior is the same.

Remark 2: I have also apply the same tests for the newest version of the OpenOffice, i.e. 4.1.3 and the behavior is the same. The bug persists.

Remark 3: I have tried to investigate this bug on other word processing tools, i.e Microsoft Office Professional Plus 2010. The bug is not present.