



After Lexington, we went a little east to Cave Run Lake just outside of Morehead which has a very nice Federal campground.



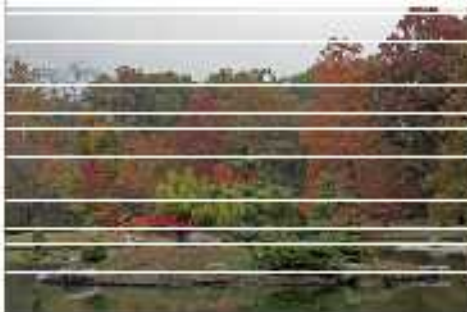
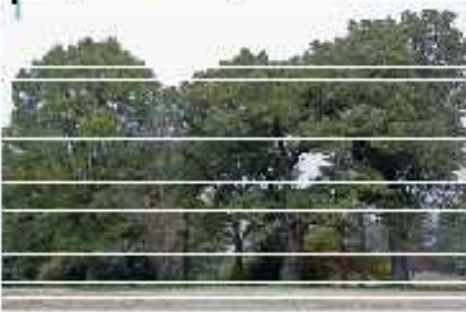
When we first arrived the area was explosively dry, but we got a lot more rain than we had expected so camping was not quite as much fun as we would like.



Surprisingly, even with heavy rain the water just soaked in and the streams remained mostly dry. I tried diving down to the Red River Gorge hoping to find some water falls. A bit of luck. I did take Lon through the old logging tunnel (twice) which is a one-way road - whoever is first gets to go.



After Kentucky we came back to Columbus to see the doctors, went down to Cincinnati to see the balloons, and then to Saint Louis to see my cousin. We really did not stop more than overnight until we got to Memphis where this garden is located.



Downtown Memphis is nice for walking with this path along the river. We rode the trolley everywhere it goes, but not the carriage.

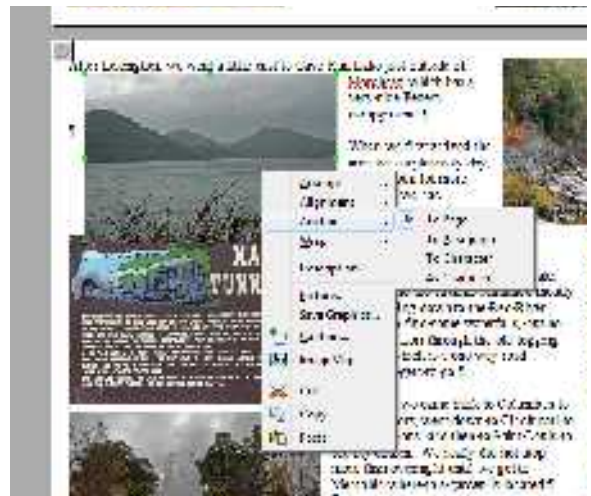


This is a new feature of 3.4.1. When the pages are scrolled up, these lines are on the pictures. When the pages are scrolled down the lines are not there on the same pictures that had the lines before.

I am trying to convert some of my old Word documents to Open Office which does not reliably or consistently convert or maintain picture positions. The following behavior applies to imported word documents, converted documents that have been saved and reopened, as well as documents created originally in Open Office.

All of the pictures were inserted into the documents anchored to the page and set for page wrap. On import Open Office retains the wrap, but anchors all the pictures to a character. This frequently causes a reshuffling of the picture positions and occasionally breaking pages into two pages with the pictures scattered.

In trying to return the pictures anchored to page Open Office most frequently (but not always) moves the picture and frequently does not accept repositioning with the cursor/mouse without multiple tries.



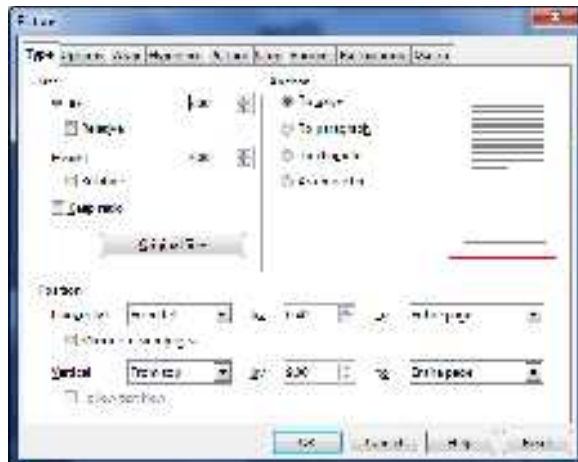
The original picture anchored to character is shown on the left and the change in position due to changing the anchor is shown on the right. Typically here at the top of the page the picture can be picked up and moved easily back to its correct position.



Moving down the page the shift in position becomes more extreme but most typically the picture can be easily returned to its correct position. In these examples the picture is moving down and to the right which is not consistent and sometimes it may move to top center or to the edge of the page (not the margin).

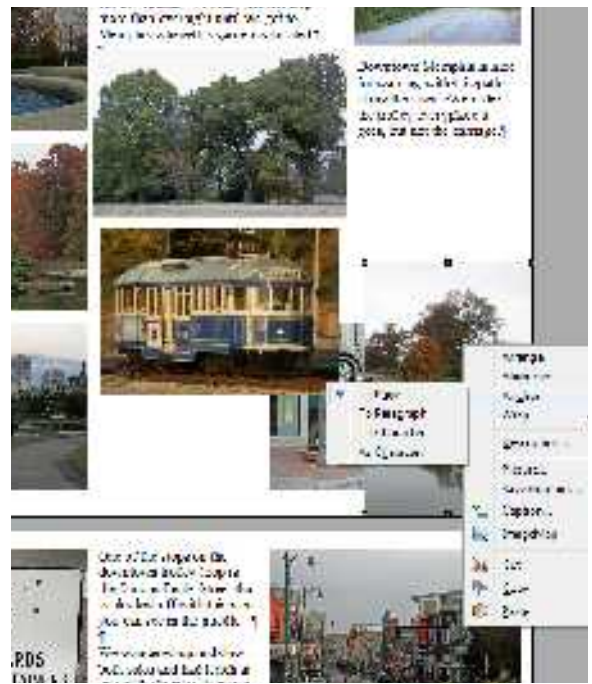


Here lower on the page the picture has moved to the bottom of the page but it was easy to pickup and move it back to the correct position.



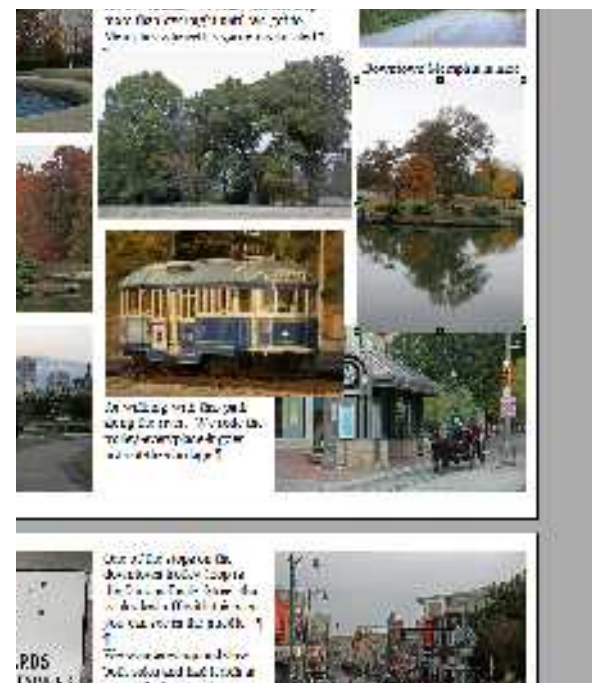
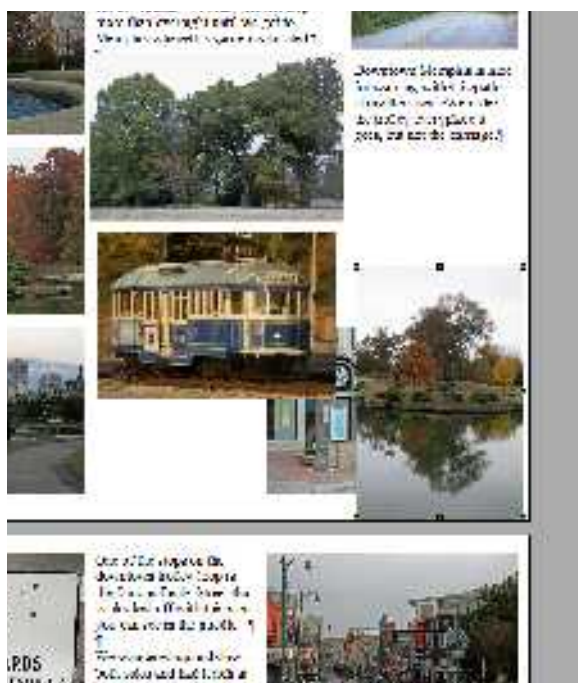
Pictures in the center of the page generally follow the same movement pattern and in this case the picture could be moved easily back to the correct position.





Here is the beginning of the truly weird behavior. The first attempt to move the picture back to its correct position gives the slight movement shown below on the left. The second attempt gives the result shown below on the right. Here it only took three tries to get it back to the correct position.

Also in regard to the screen images shown here. After pasting a shot into this document, applying the crop, and adjusting the size; if the image is then anchored to the page it jumps to the top center. However, if the image is moved slightly before being anchored it does not move but remains where it was placed. This strategy does not seem to work with the pictures from the imported image.





At the bottom of the page the picture moves to the bottom and can be extremely difficult to return to its correct position. This frequently requires moving the picture to the center of the page (which it does not actually do) and then moving it back down to the correct position.

I am not sure if it is consistent, but I just discovered with this document that opening the picture dialog box and then closing it allows the picture to be moved directly to its correct position without multiple tries.

I would appreciate if you could fix this because reanchoring a hundred or more pictures in a document is difficult enough without having to struggle with repositioning.

All of these examples were created using Win7 on an I3 processor. I have not tried to duplicate this with XP or Ubuntu.

Thanks

John Markiel
2rover@isp.com