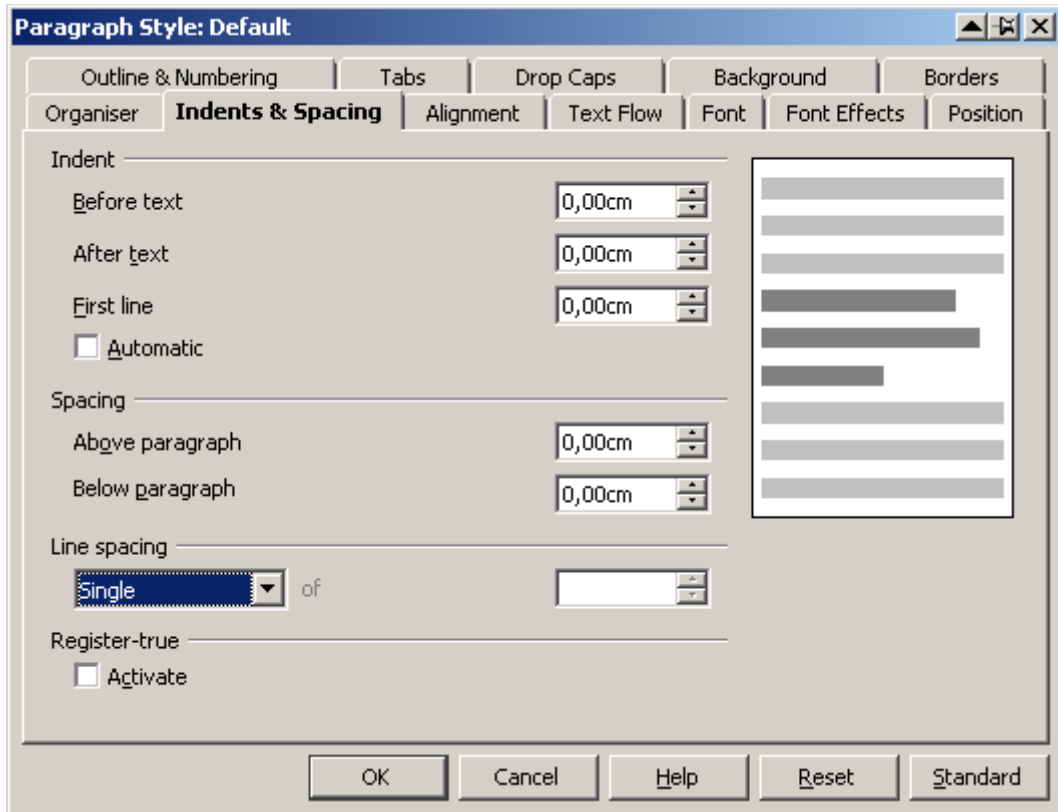
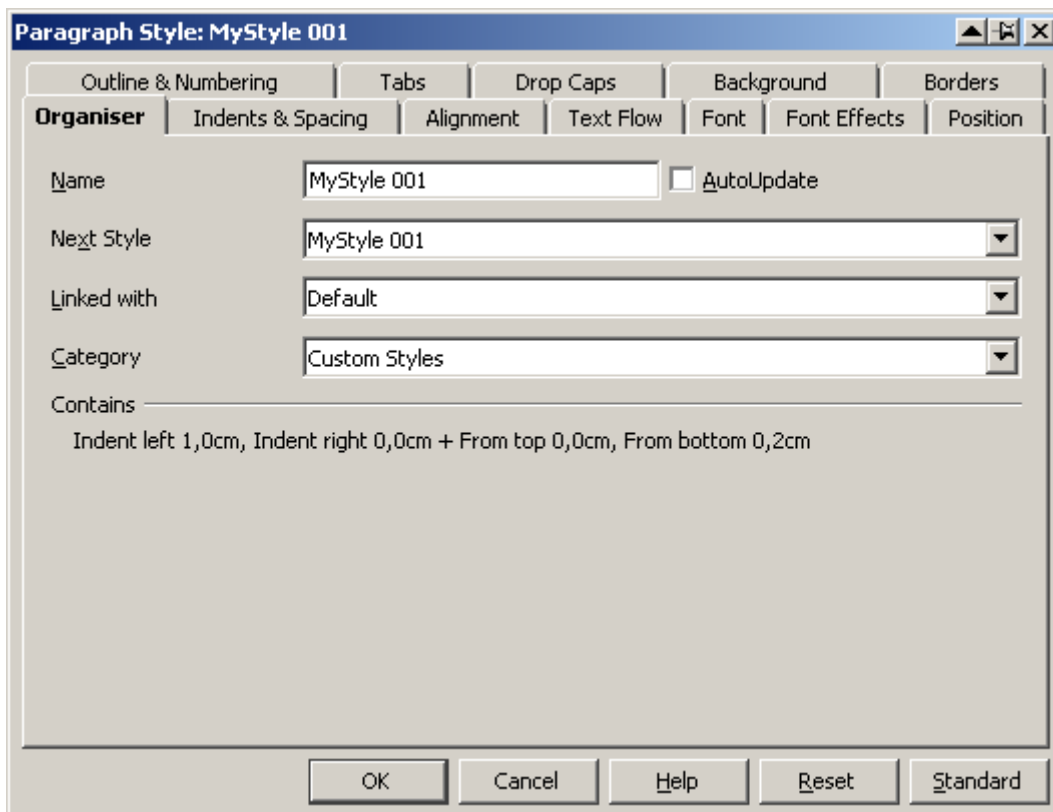
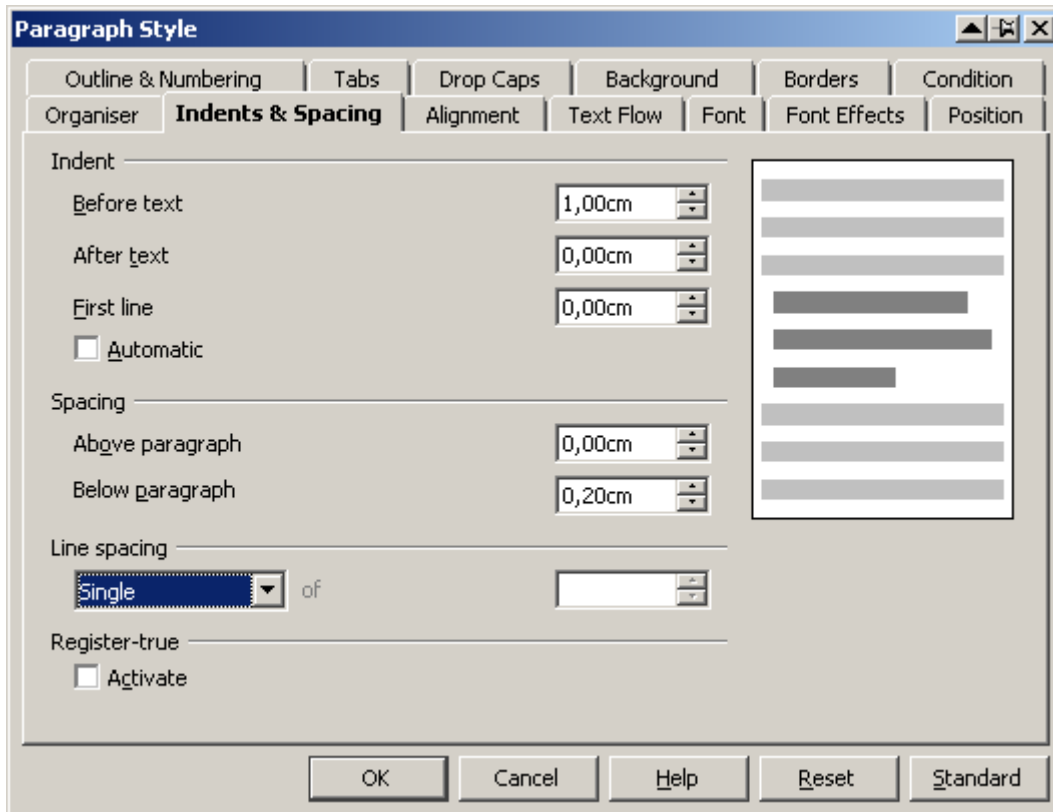


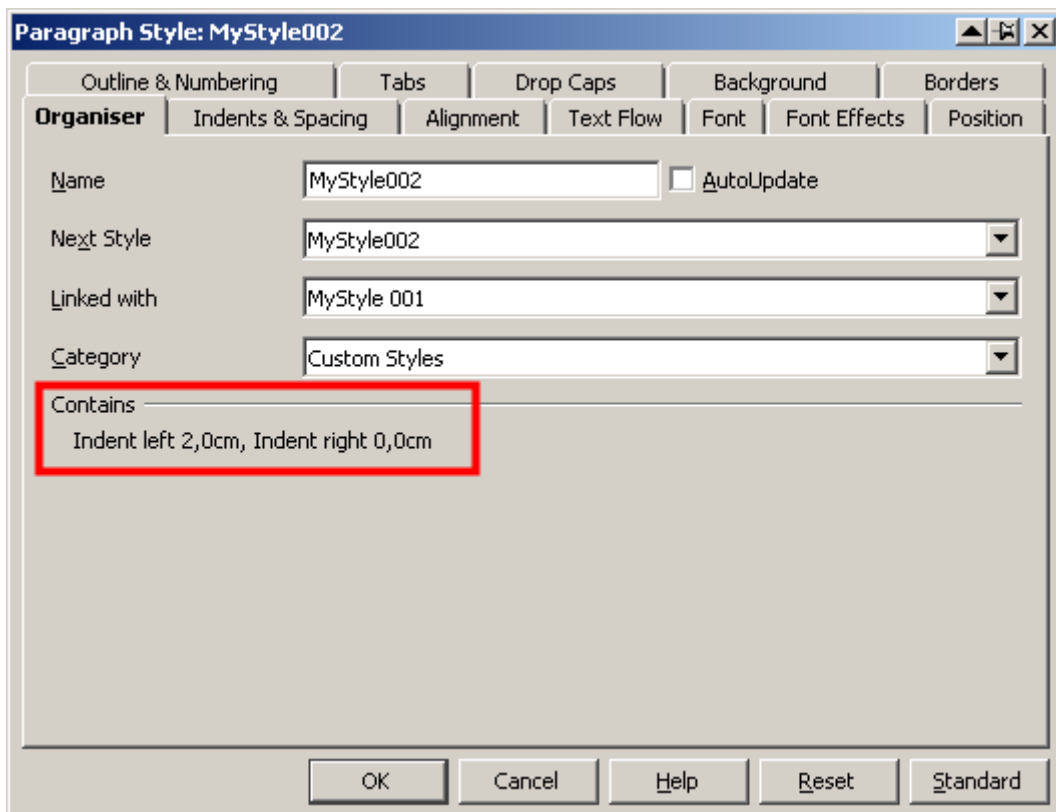
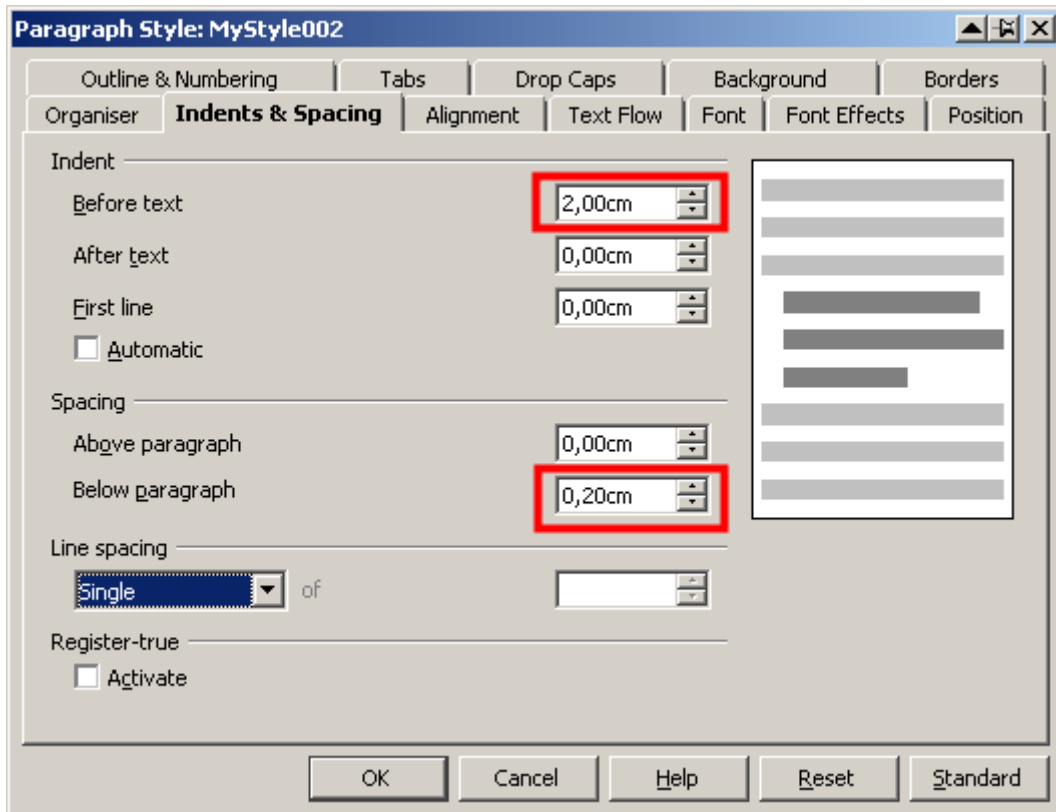
Paragraph style "Default", Indents & Spacing is defined as follows:



I define a paragraph style named "MyStyle 001", linked with "Default", Indent Before text = 1,00 cm, Spacing Below paragraph = 0,20cm



Then I define a paragraph style named "MyStyle 002", linked with "MyStyle 001", Indent Before text = 2,00 cm, Spacing Below paragraph unchanged, which is still 0,20cm (inheriting from "MyStyle001").



"Contains" says "Same as MyStyle001 plus Indent left 2,0cm, Indent right 0,0 cm."

Using the two styles looks as follows:

```
MyStyle001¶
MyStyle001¶
MyStyle001¶
MyStyle001¶
    MyStyle002¶
    MyStyle002¶
    MyStyle002¶
    MyStyle002¶
```

I save the document and close it.

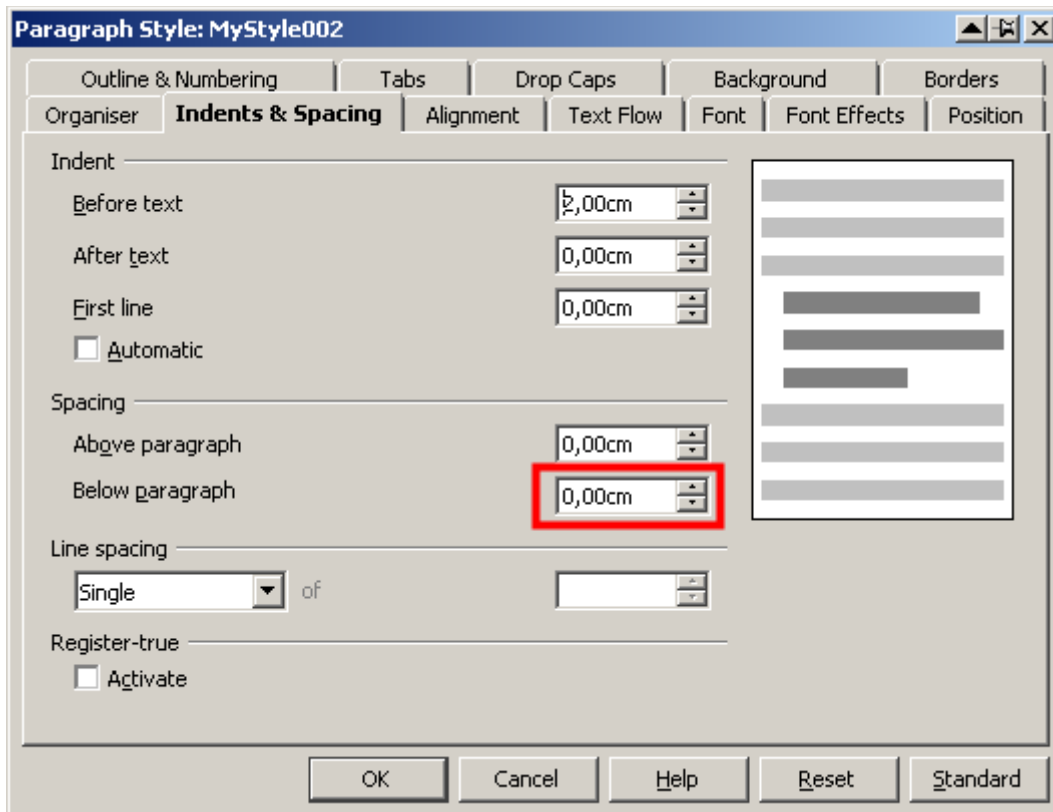
I reopen the document.

Now the text looks like

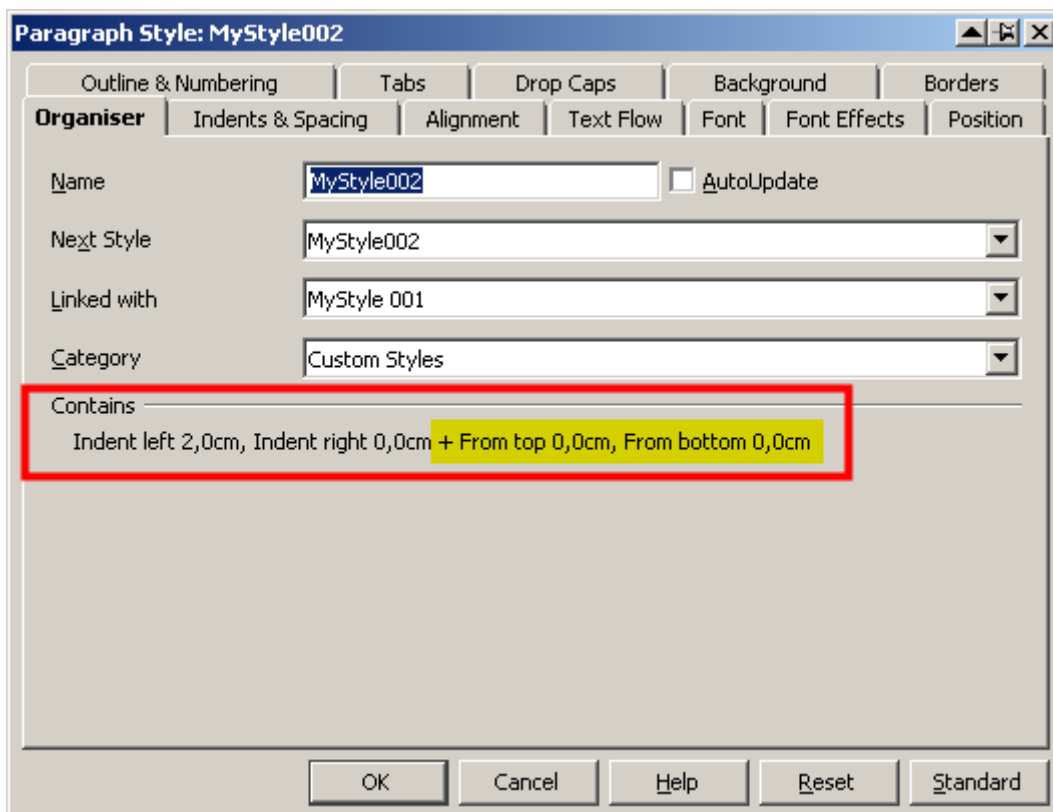
```
MyStyle001¶
MyStyle001¶
MyStyle001¶
MyStyle001¶
    MyStyle002¶
    MyStyle002¶
    MyStyle002¶
    MyStyle002¶
```

and the paragraph style "MyStyle001" has changed as follows:

The Spacing Below paragraph has been set to 0,0cm



and in "Organiser" ... (see yellow highlighting)



If I leave "Indent before text" unchanged when creating "MyStyle002", Spacing below paragraph will not be set to 0,0cm.