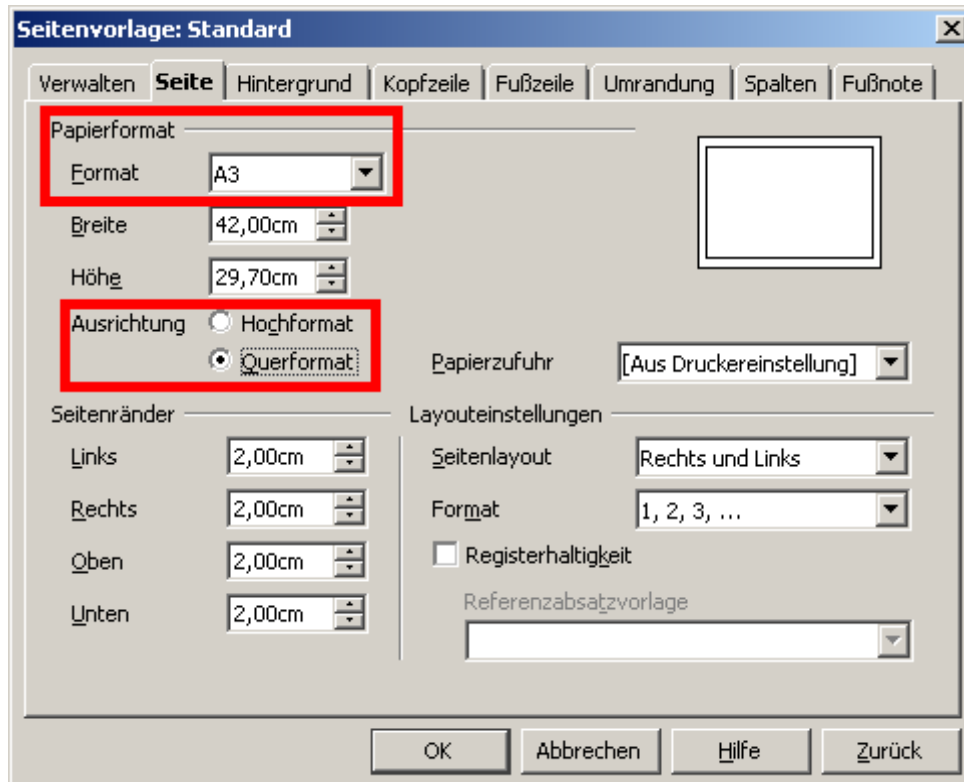
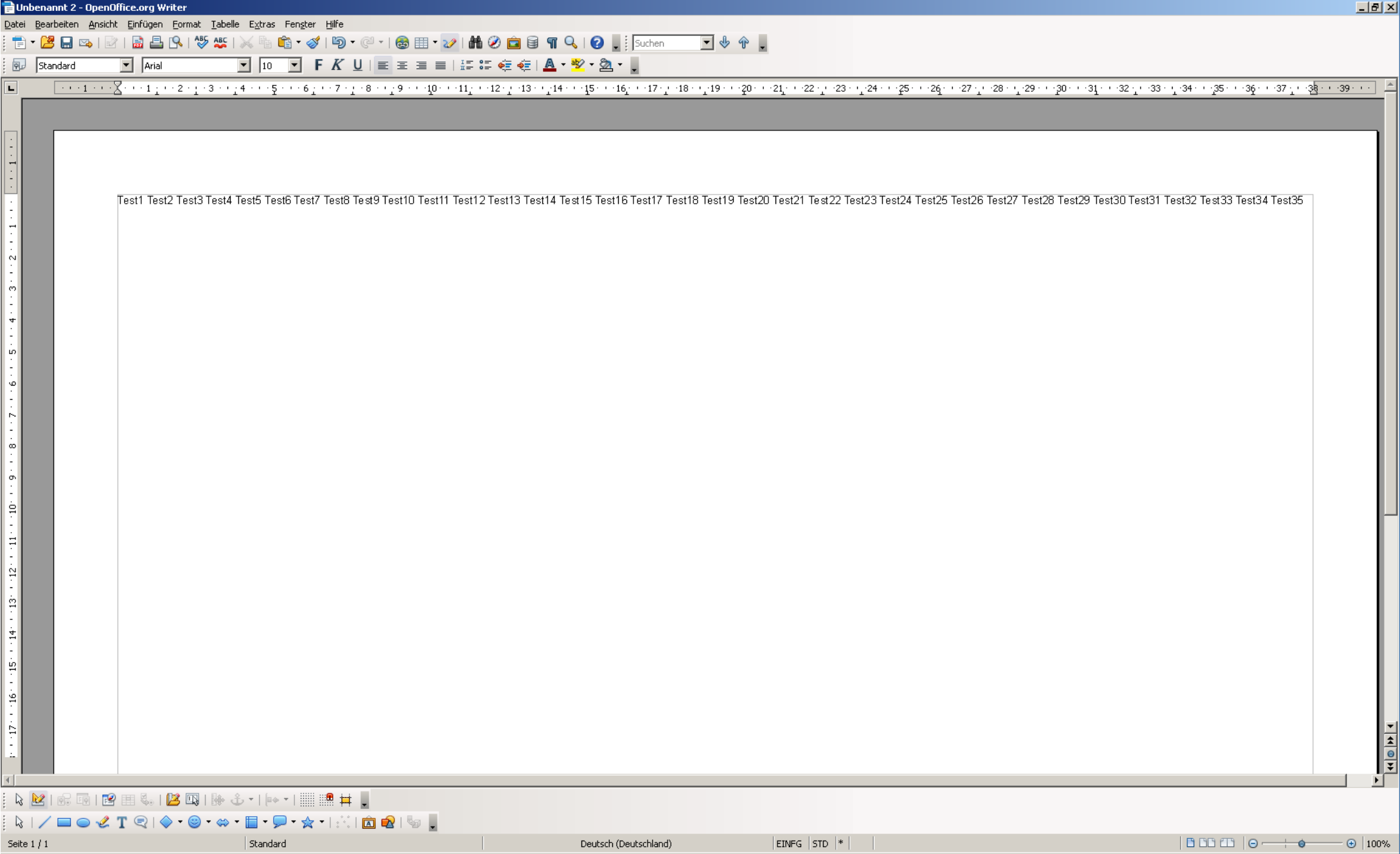


Set page size to A3, landscape.

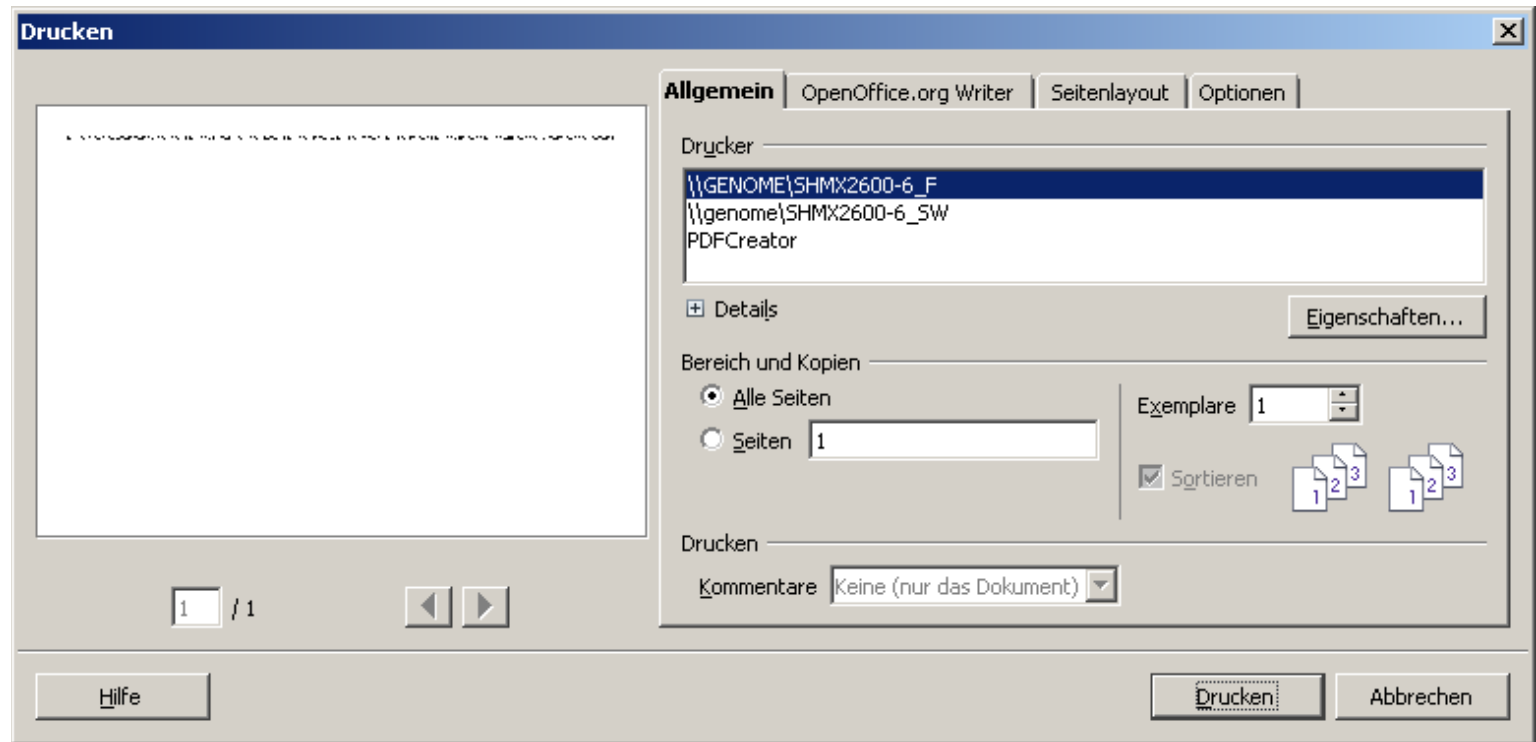


Fill one line with text.

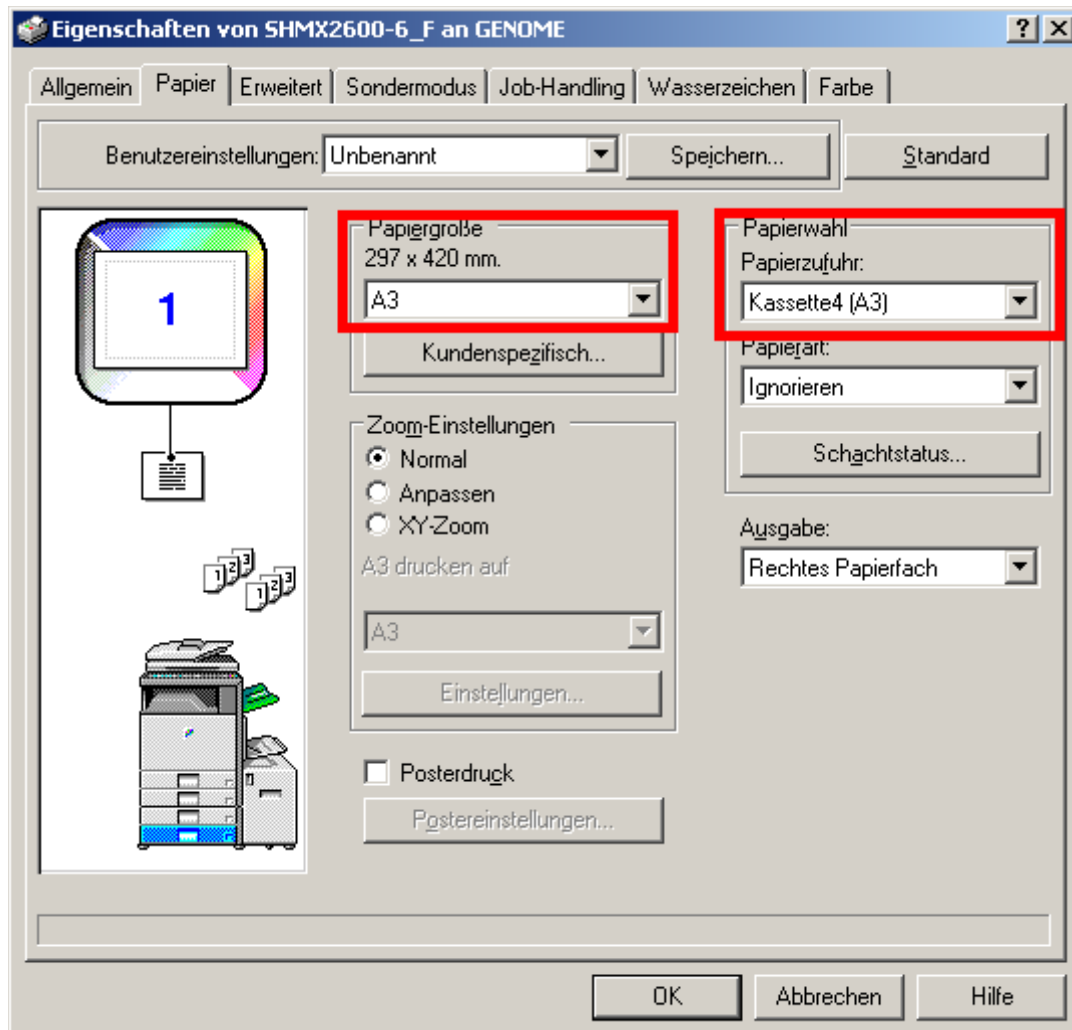


Go to the printing dialog.

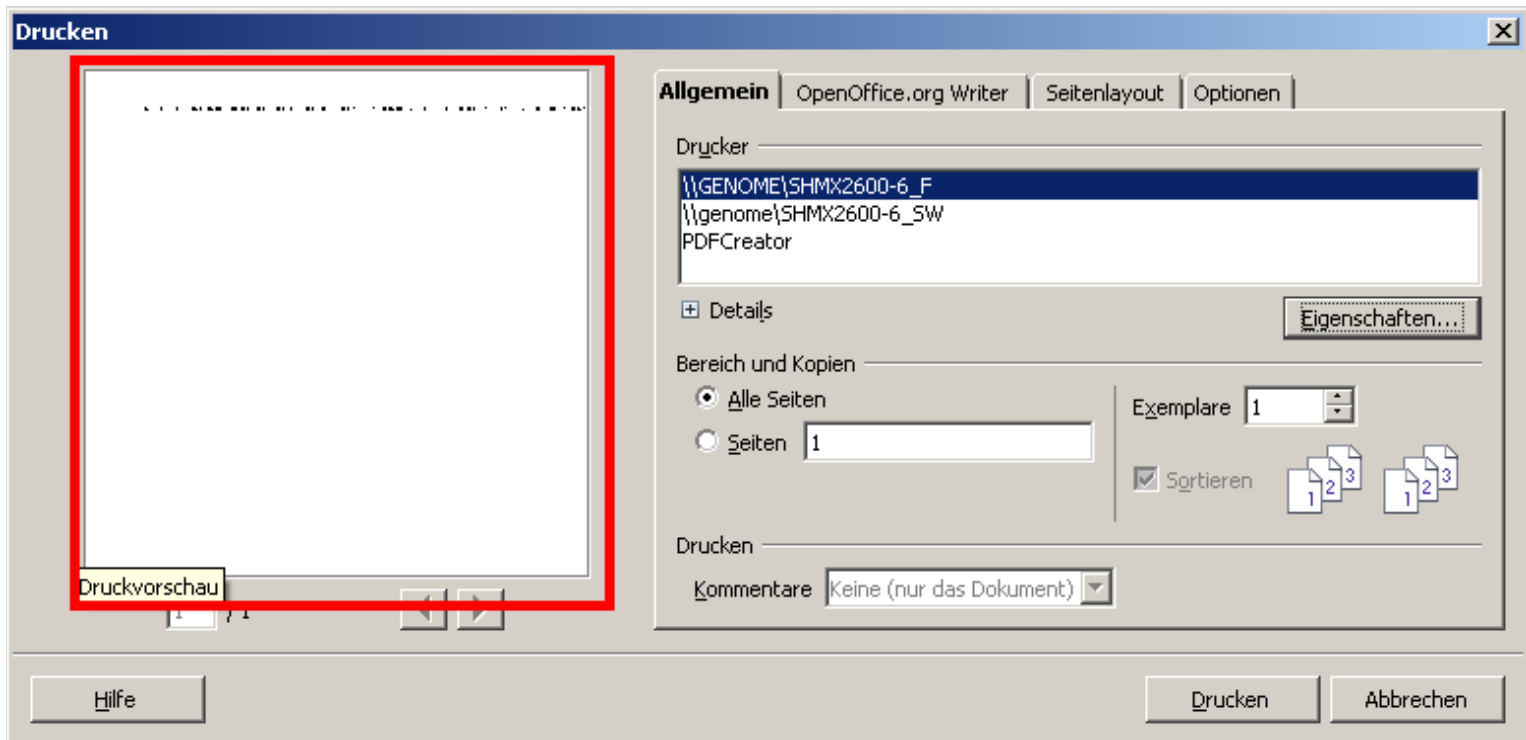
The page format and layout looks fine at the moment.



Go to the printers properties, set page size to A3 and choose the right cassette.



After closing the printer properties dialog, the preview page shows not any more the A3 proportions. It shows just a square format.



And exactly what you see in the preview, is what is printed. About 1/3 of the page got lost!