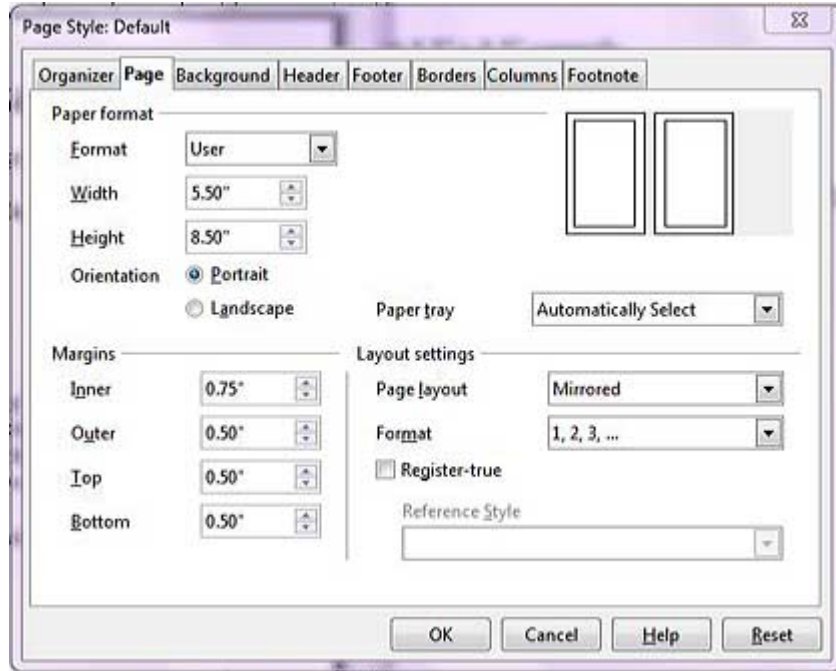


Writer induced Print-Dialog Errors [Samsung Universal Printer Driver or PCL5 Driver]:

Half-Page Duplex-print Setup cannot be saved with a unique name.

1. It is possible to define the correct “Format-Page” setup for mirrored margins with binder space required for duplex-print by selecting the existing “User” format and changing page-size and mirrored-margins, as shown below:



but,

2. it is NOT possible to save that format by overwriting the name “User” with something like “HalfPage” so the page format and mirrored-margins do not have to be changed for each half-page document, handbill, etcetera is created in the future. Earlier releases allowed this to be done.

Will not duplex-print half-page sheets, **which I have done routinely with other releases.**

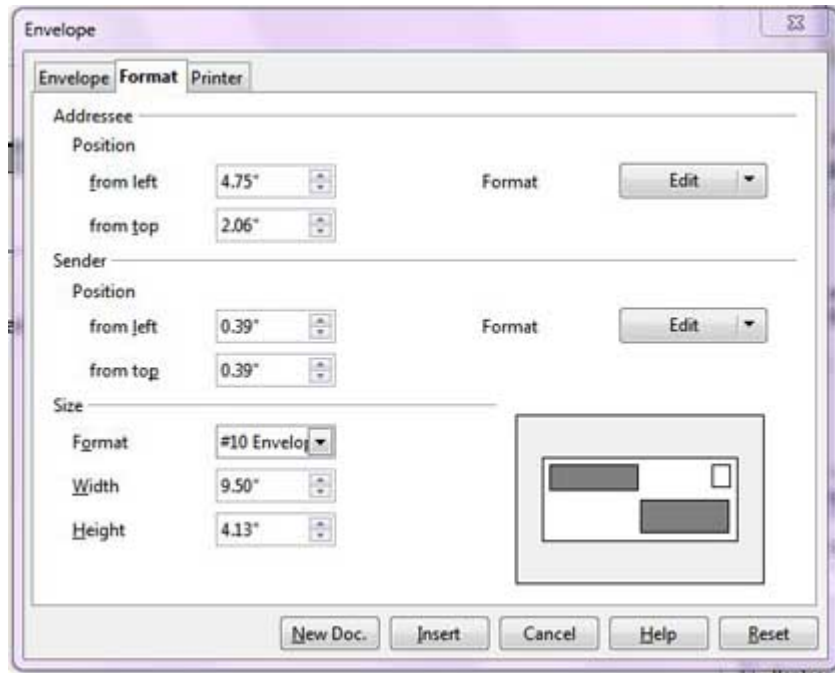
1. Sees, counts and prints only left-only pages from such input.
2. Print-Dialog disables duplex “Long-Edge” selection when the half-page-sheet format is in effect.
3. If, instead of duplexed print, right-only pages printing is tried, then blank pages are printed. This means **there is no way to surmount problem 1. above without need to create two files [right- and left-page with binding space] and printing twice for each sheet.**

NOTE: A file “HalfPageTestDoc.odt” was attached to this submission for testing.

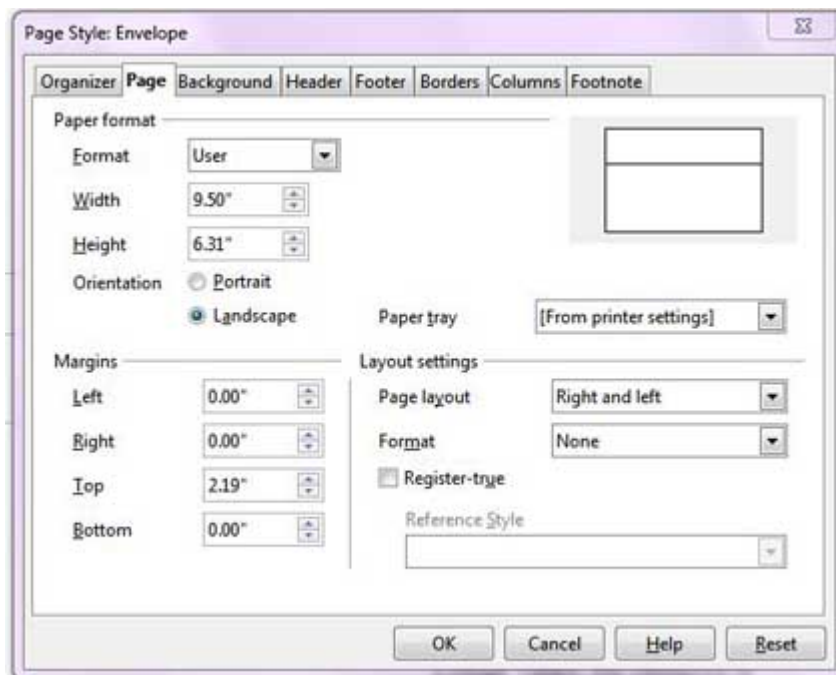
Continued on the next page. . .

Print-image of Envelopes [#10 Envelopes, for example] does not match Page-image shown to the user

The Writer shows this correct format to the User:



but then prepares this false format for the **printer**:



Note the changed image of the envelope.

continued to the next page. . .

and this is the image produced [black outline], shown in the orientation the false image would be fed into a center-fed printer:

This image, jiggered for one dumb kind of printer, has been rotated 90° counter-clockwise. This is the orientation for a center-fed printer.

Acclaris Reimbursement Center
P.O. Box 25171
Lehigh Valley, PA 18002-5171

The Green [or Gray] lines show the outline of the envelope as it leaves a center-fed printer.

This means the user must reformat every envelope before it is printed!

Return Address