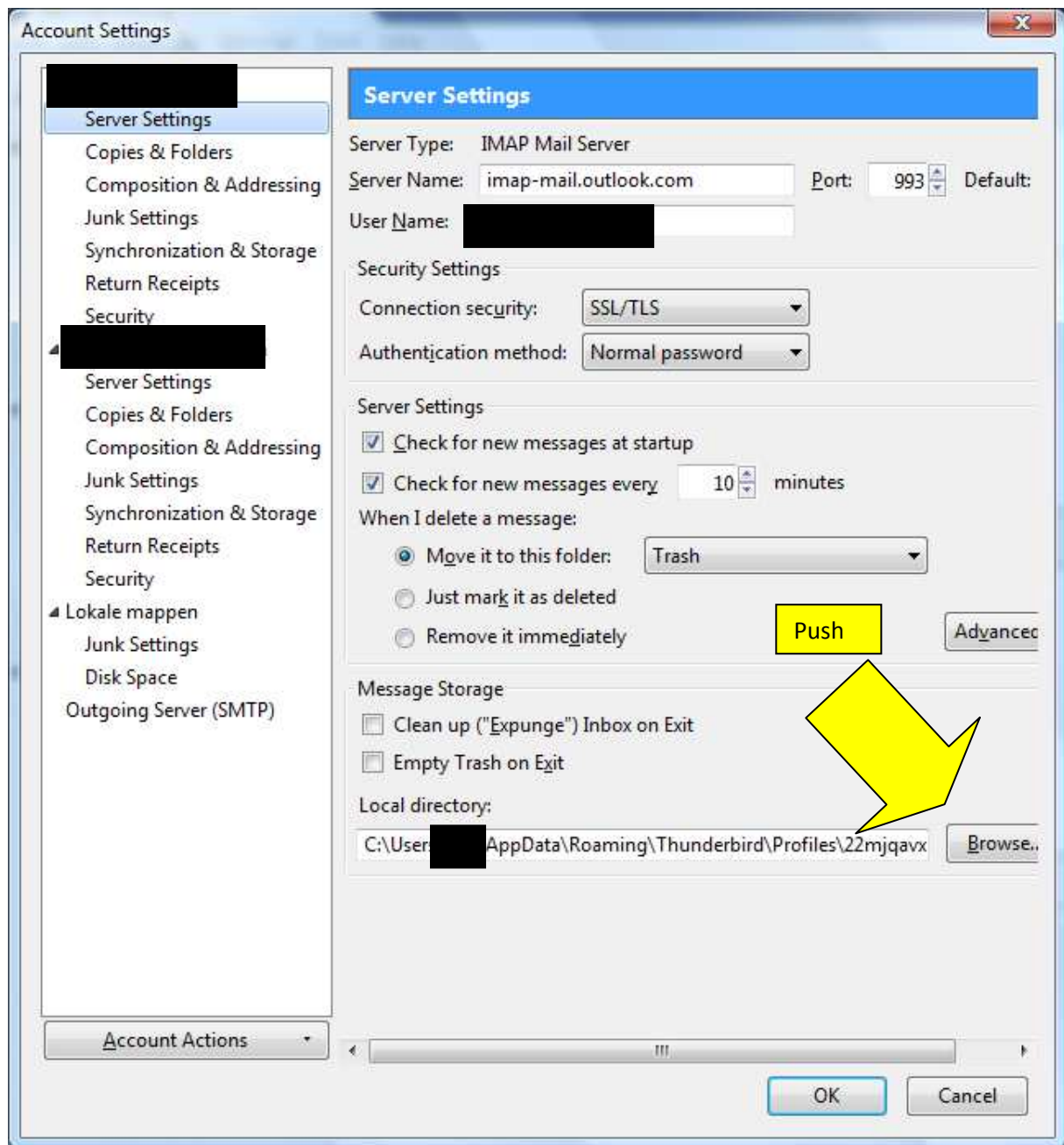
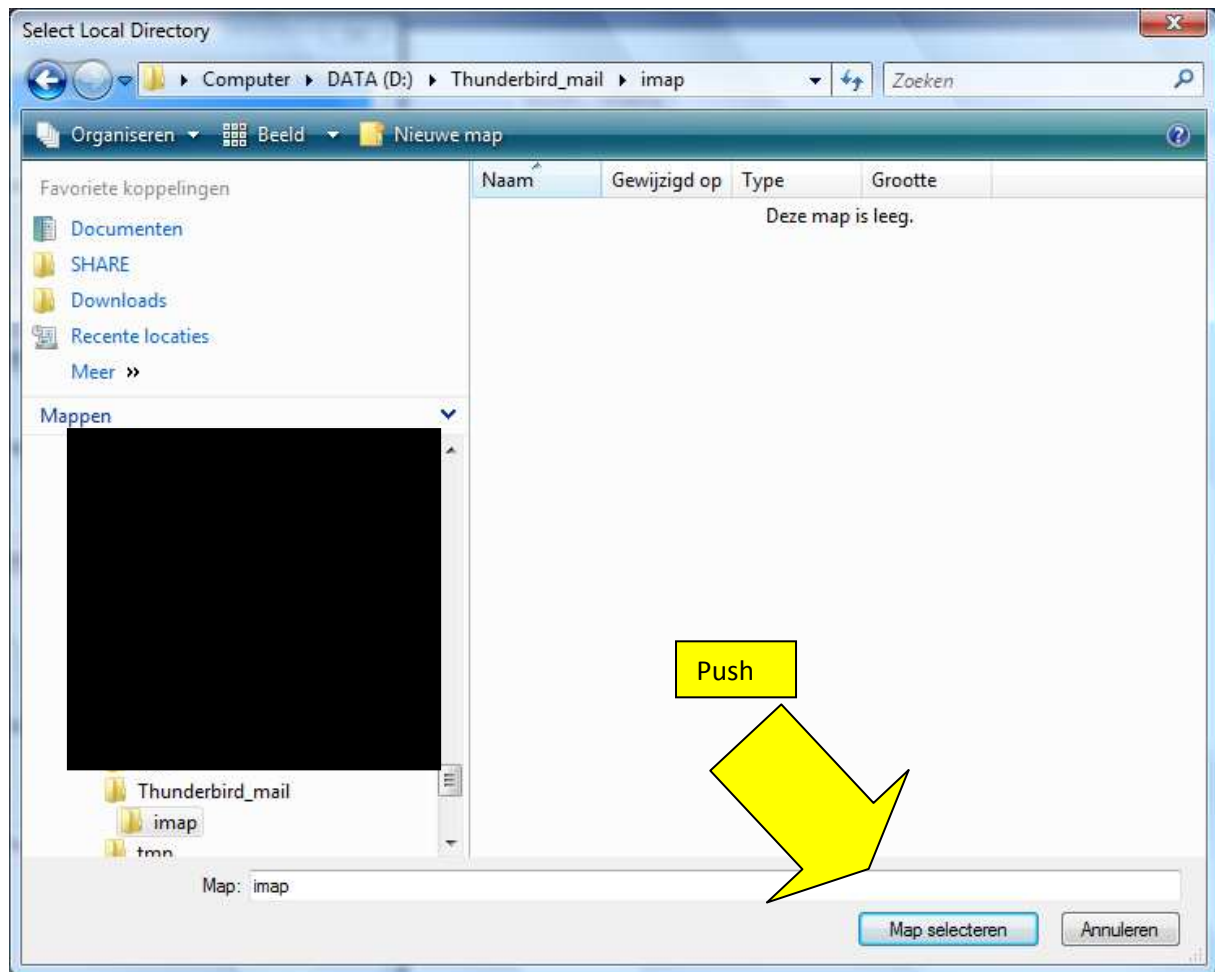


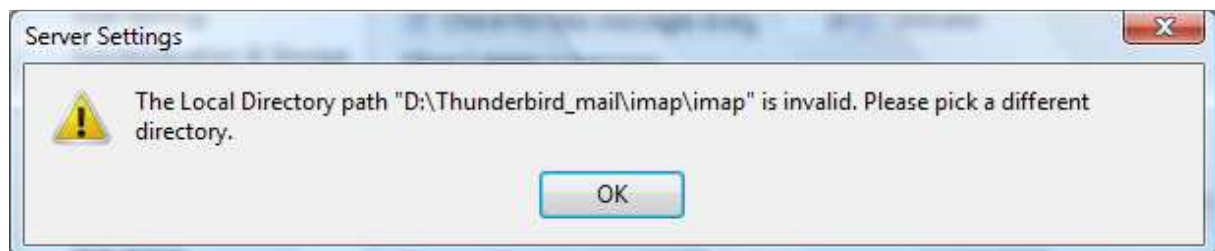
METHOD 1



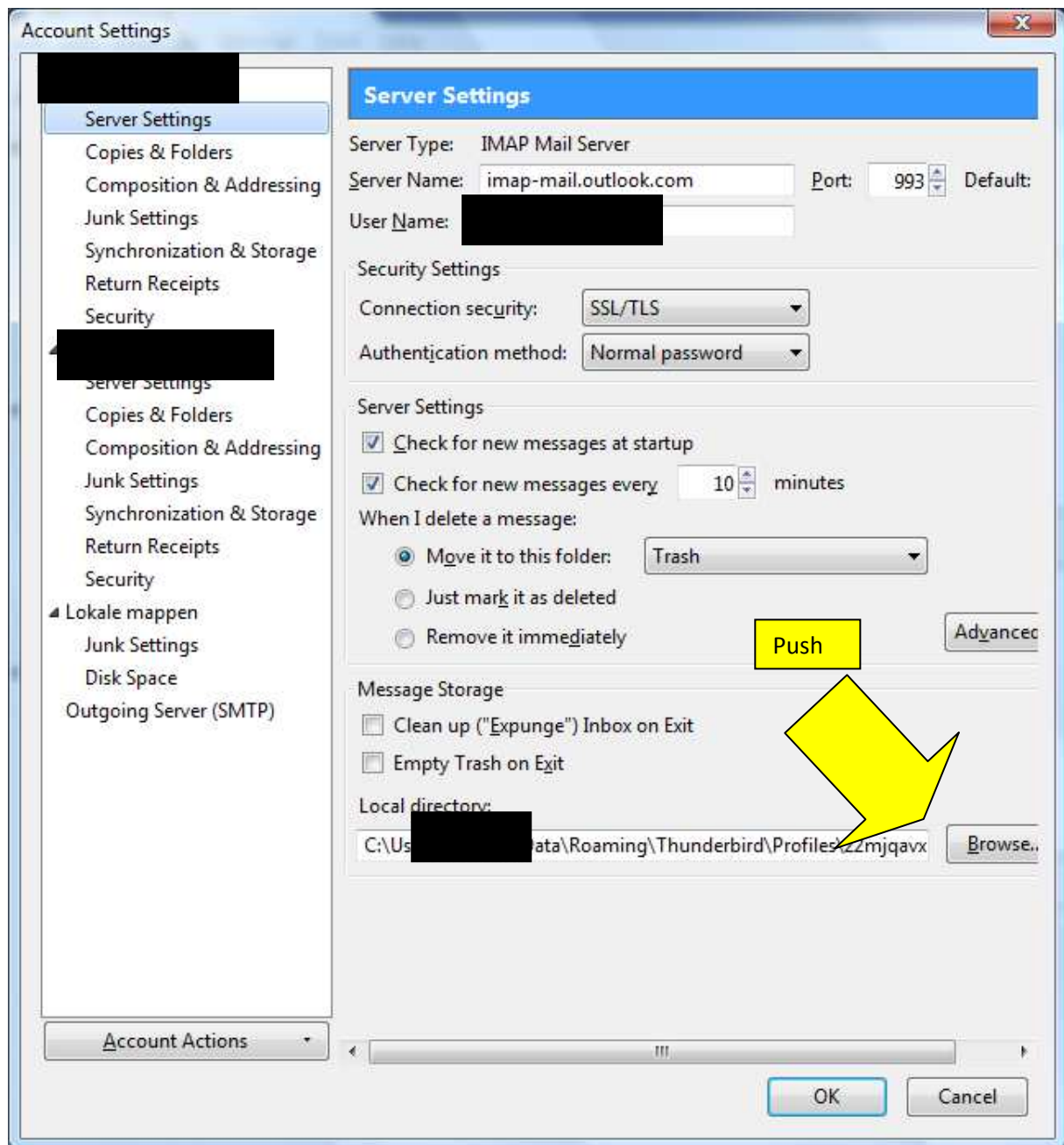
Select Local Directory appears. I browse to the directory D:\Thunderbird_mail\imap



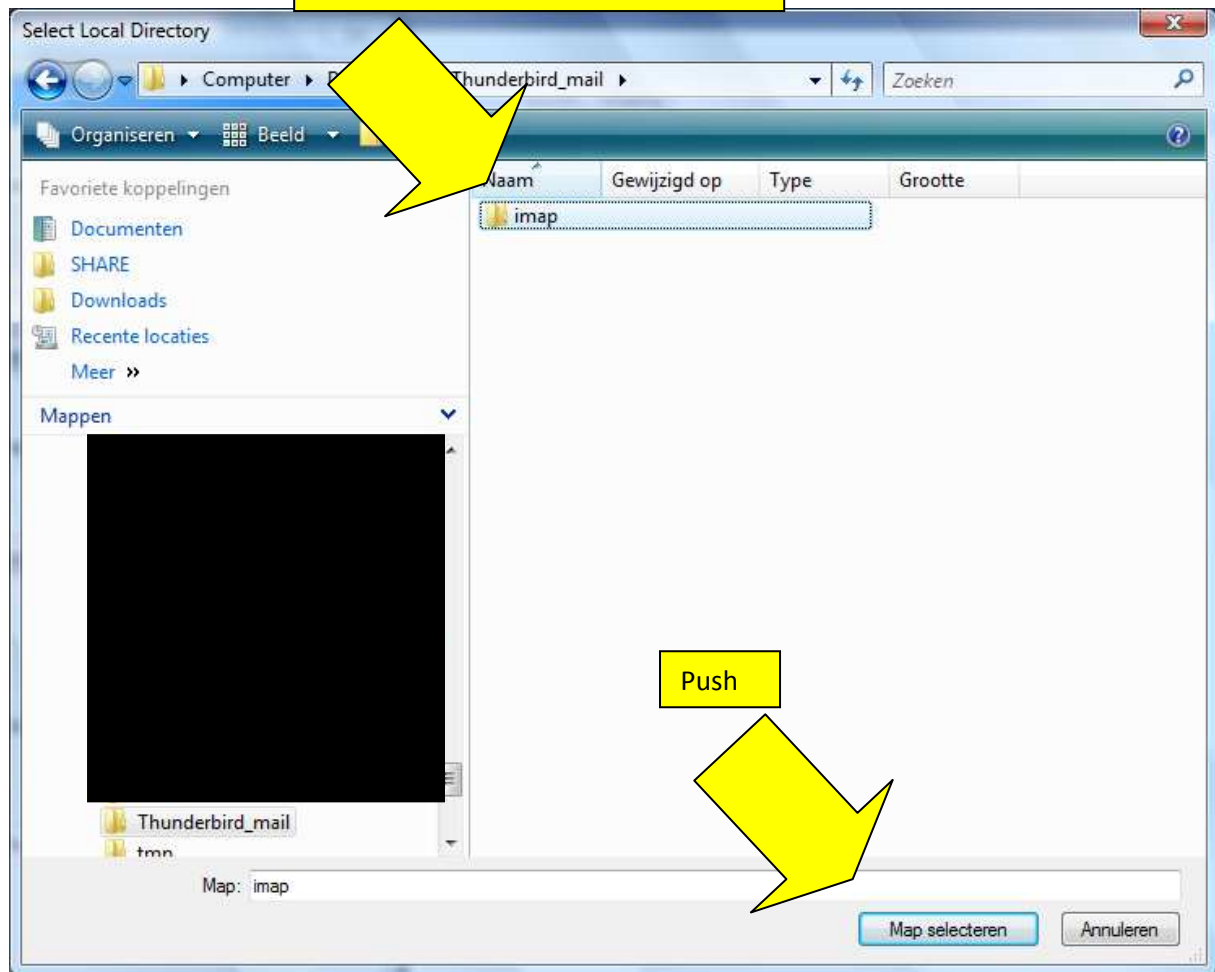
Warning appears.



METHOD 2



Click One time. (select folder)



Account Settings

Server Settings

Server Type: IMAP Mail Server

Server Name: Port: Default:

User Name:

Security Settings

Connection security:

Authentication method:

Server Settings

☒ Check for new messages at startup

☒ Check for new messages every minutes

When I delete a message:

☒ Move it to this folder:

☐ Just mark it as deleted

☐ Remove it immediately

Advanced

Message Storage

☐ Clean up ("Expunge") Inbox on Exit

☐ Empty Trash on Exit

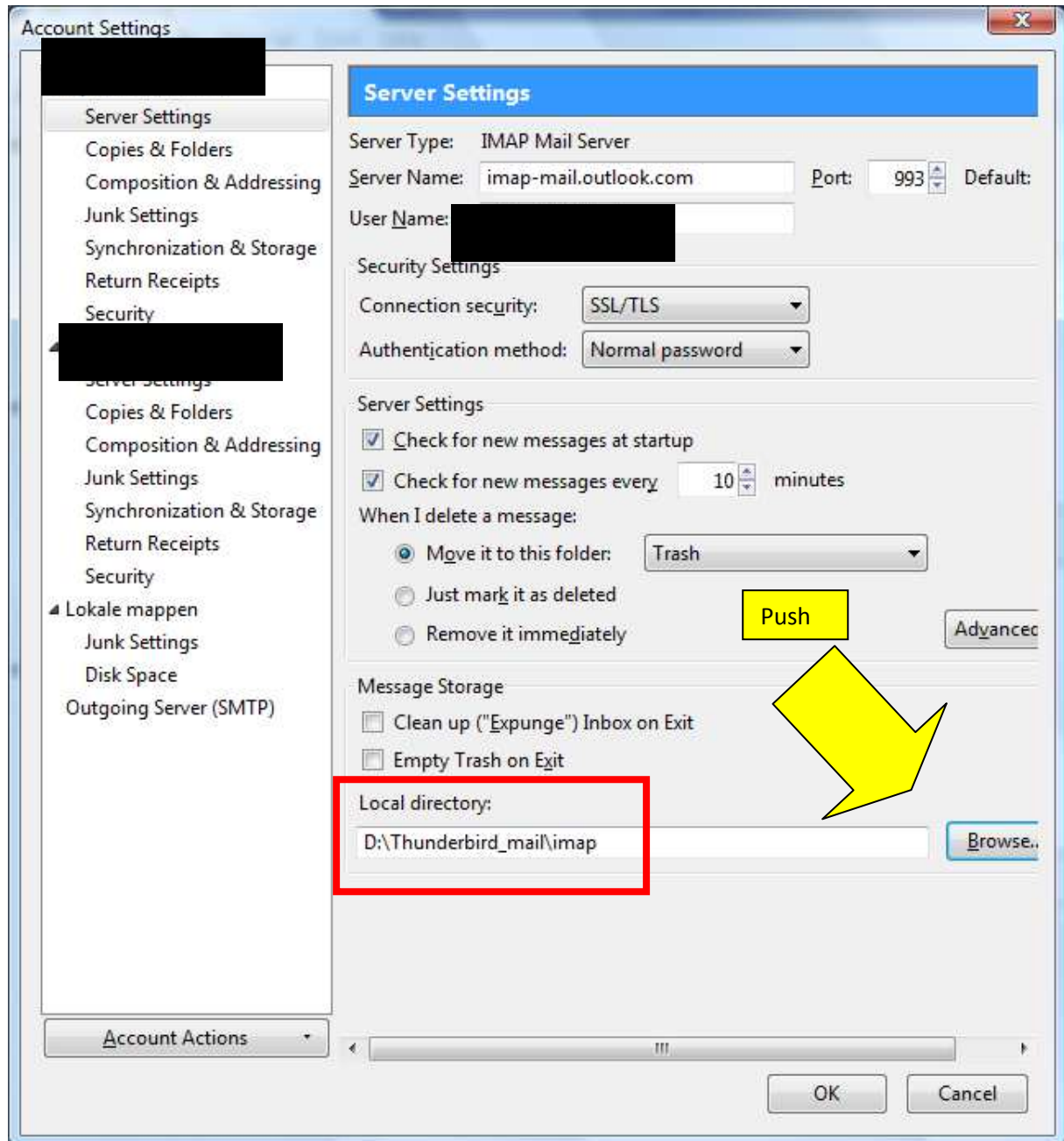
Local directory:

Account Actions

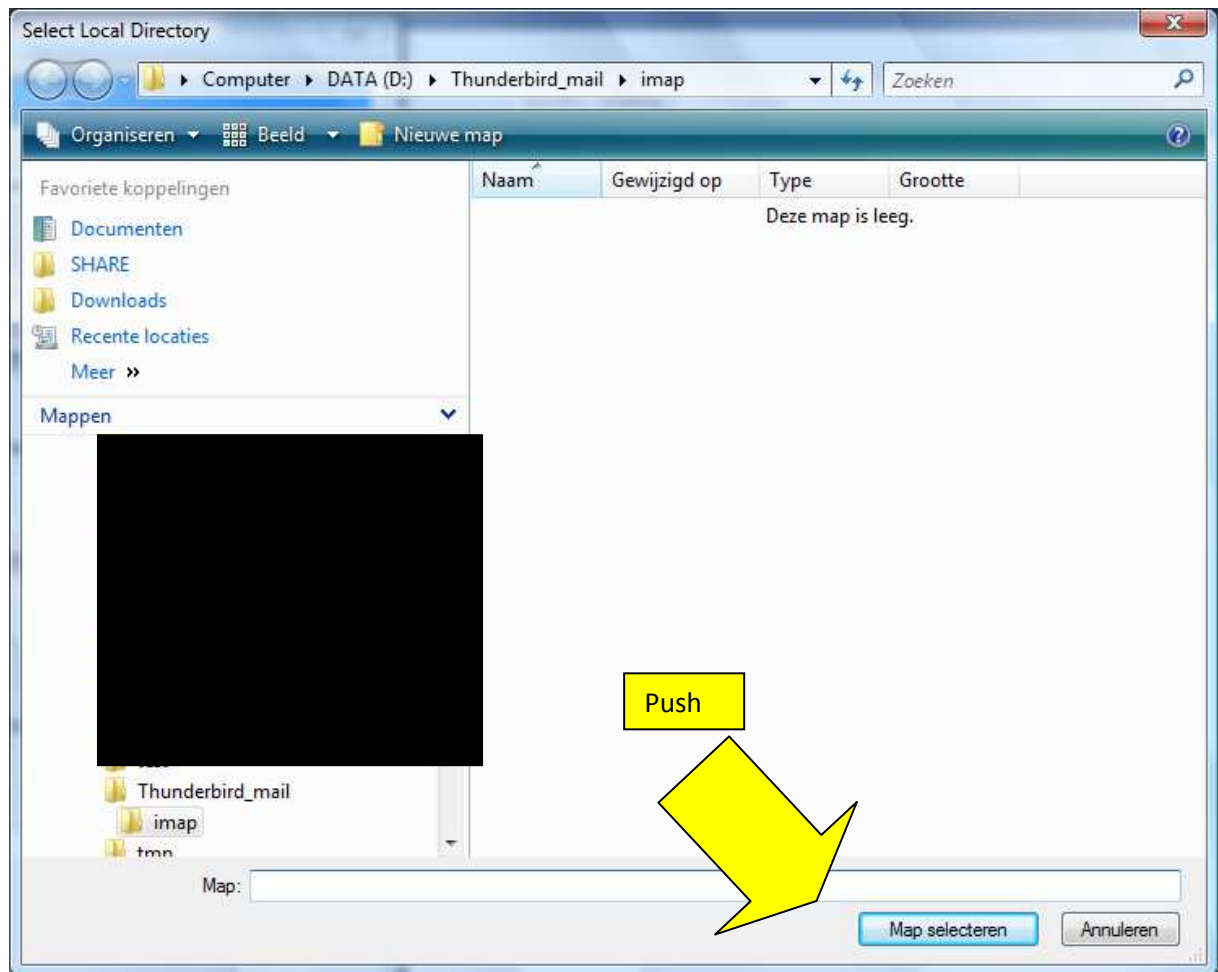
OK Cancel

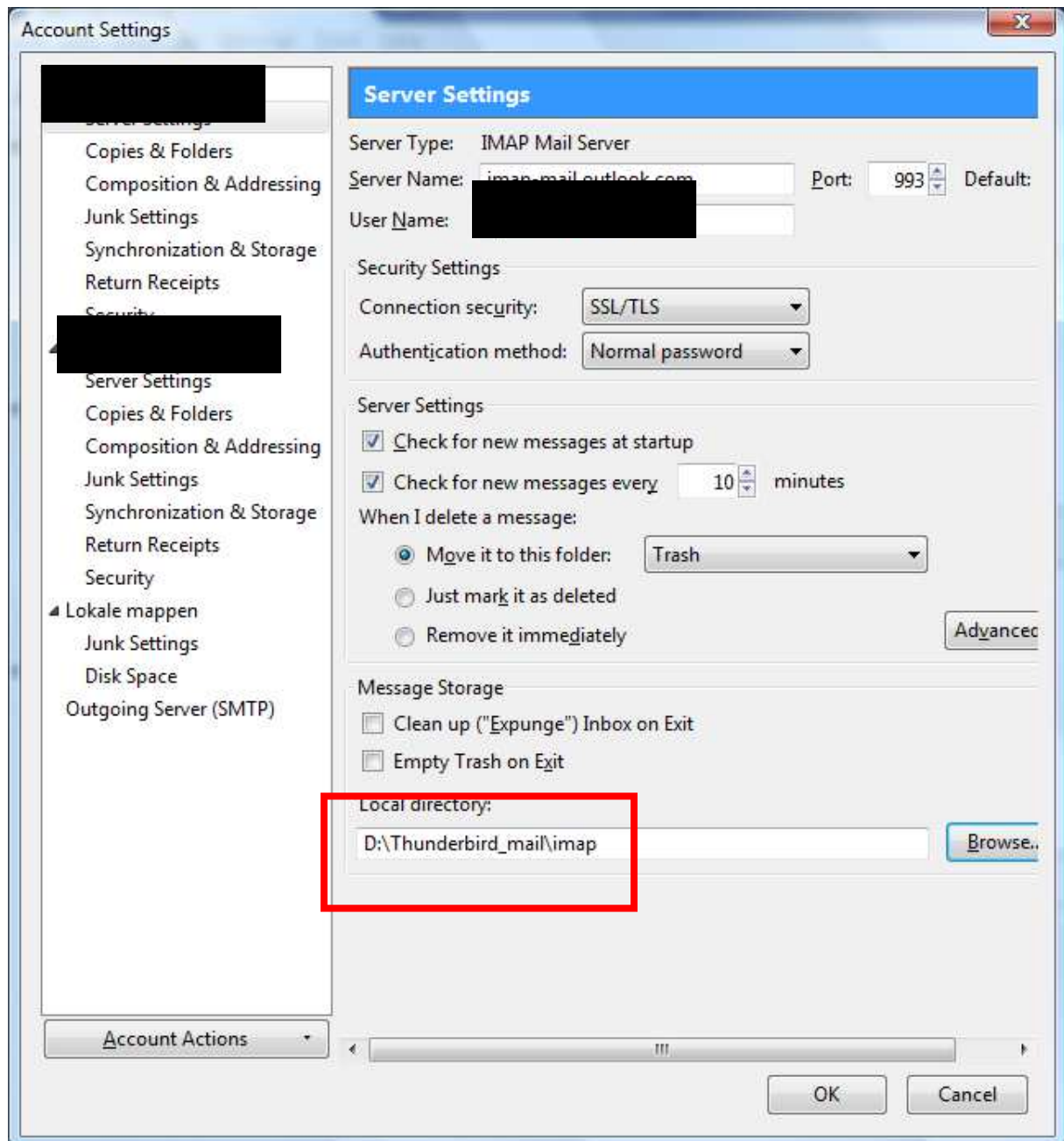
One strange thing:

After the directory D:\Thunderbird_mail\imap is accepted and I wanna change the Local Directory again, the 'Select Local Directory' dialog opens from the directory D:\Thunderbird_mail\imap. If I do nothing accept confirming the same directory TB will accept it. This seems logical, however this is the same as Method 1 and Method 1 doesn't work.



The following window appears. (The same select window as in method 1)





The Warning doesn't appear and the same directory is chosen.

Why doesn't Method 1 work?