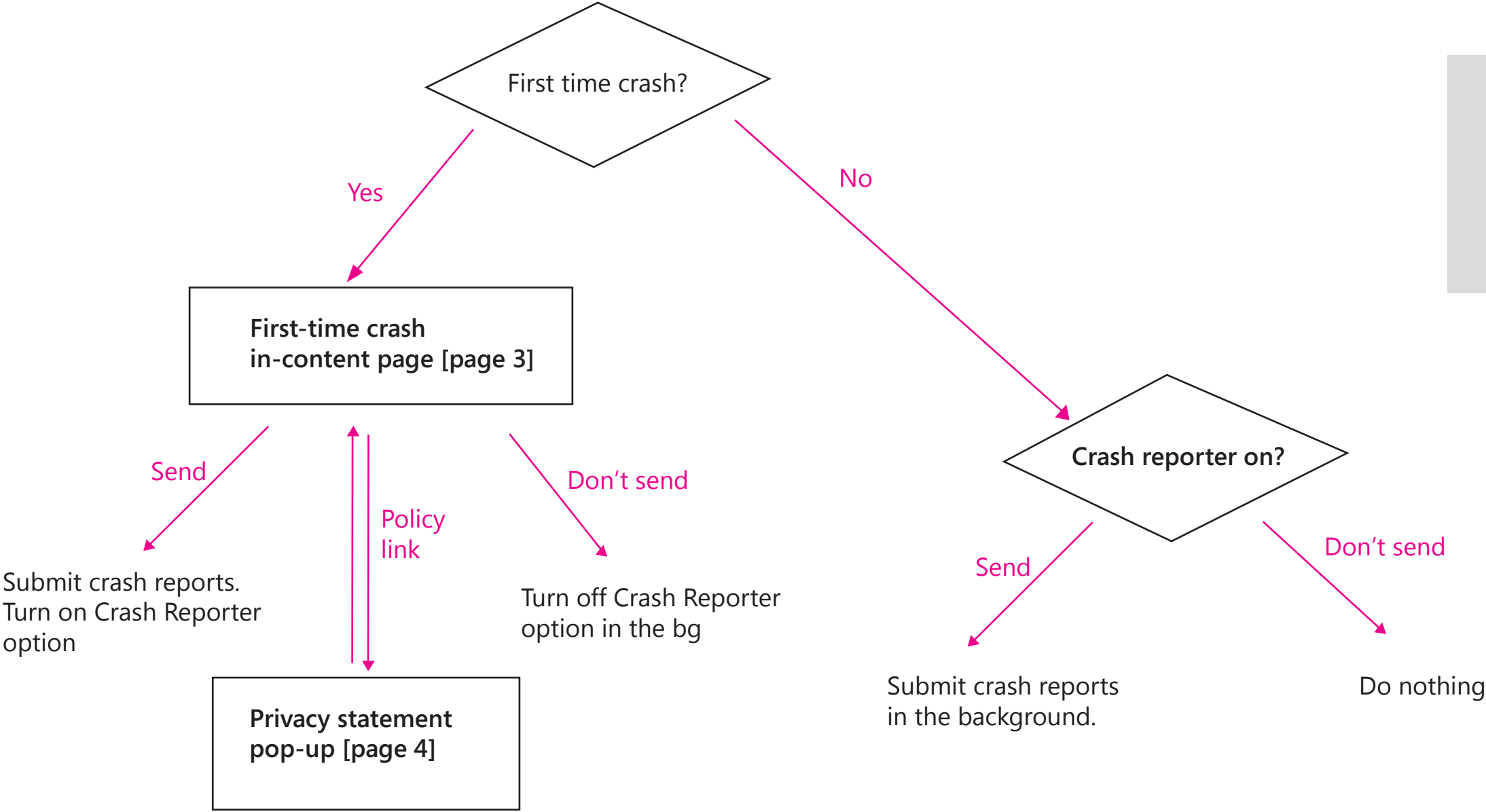




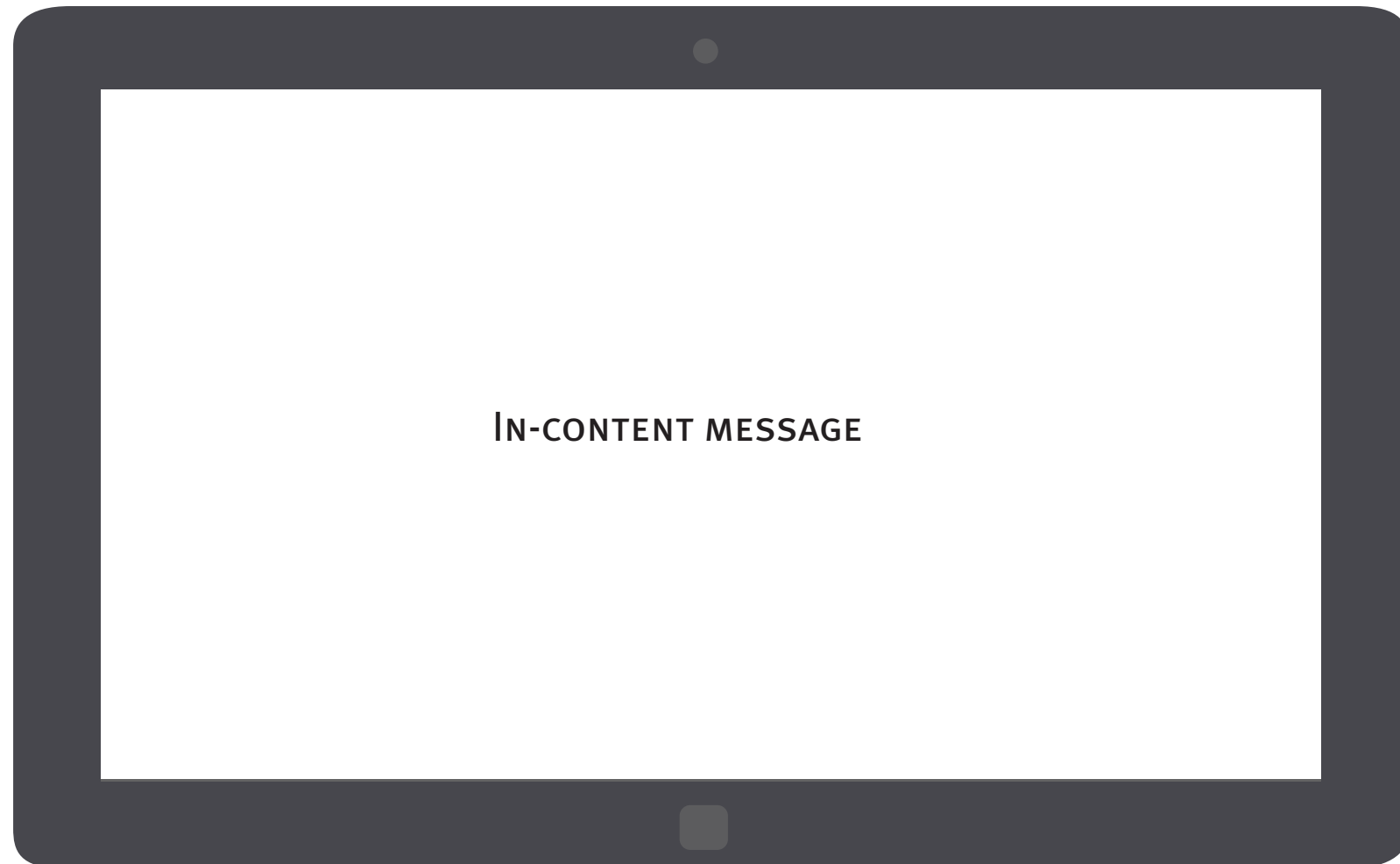
Interaction Flow

After Firefox recovers from a crash



If the users close the dialog page without making any choice, Firefox Metro will display the crash report again next time it crashes.

1 *First-time crash message dialog*



The crash reporting message is an in-content page that shows up once FX Metro recovers if the users have not made a choice on their crash reporting choice.

Information to convey

Title:

- Main instruction

Content:

- Why the users are prompted with this crash message dialog
- Why a preference is needed from the users
- How to change the preferenc
- More info

Button:

- Opt in
- Opt out

1 *In-content crash reporting message*

Would you like to send Mozilla crash reports?

We are sorry, Nightly just recovered from a crash. Sending crash reports will help Mozilla make Nightly more stable and secure. You can always change your preference in Settings/Options.

▶ What's in a crash report?

Send reports

Don't send

Tapping the triangle or the text should load in extra content. [See page 4]

Also the wording "What's in a crash report" might change depending on Alina's decision in the next few weeks

1 *In-content crash reporting message*

Would you like to send Mozilla crash reports?

We are sorry, Nightly just recovered from a crash. Sending crash reports will help Mozilla make Nightly more stable and secure. You can always change your preference in Settings/Options.

▼ What's in a crash report?

For the current versions of Firefox, "Firefox Crash Reporter" is Firefox's crash reporting feature. With this feature, you have the option to include Personal Information (including your email address), Potentially Personal Information (including your IP address and the URL of the site you were visiting when Firefox crashed), and a comment. Firefox Crash Reporter also sends a list of all add-ons that you were using at the time of the crash, the time since (i) the last crash, (ii) the last install, and (iii) the start-up of the program.

[Learn more about Nightly privacy policy](#)

Send reports

Don't send

The texts are not finalized.
Alina will give us on a short
summary of crash reporting
to display here.

When the user clicks the link, we display a lightbox
pop-up to show the full content of Nightly privacy
policy [See page 5].
Also the wording of the link is not finalized yet.

2 Privacy statement pop-up

When the lightbox is displayed, the user should be taken to the section of Crash Reporting first. A horizontal scroll bar should be available if the user is interested in reading other policy statement

Would you like to send Mozilla crash reports?

Nightly privacy policy

Crash-reporting Feature (not applicable to Firefox for mobile) Firefox has a crash-reporting feature that sends a report to Mozilla when Firefox crashes. Mozilla uses the information in the crash reports to diagnose and correct the problems in Firefox that caused the crash. Though this feature starts automatically after Firefox crashes, it does not send information to Mozilla until you explicitly authorize it to do so. By default, this feature sends a variety of Non-Personal Information to Mozilla, including the stack trace (a detailed description of which parts of the Firefox code were active at the time of the crash) and the type of computer you are using. Additional information is collected by the crash reporting feature. Which crash reporting feature is used and what additional information collected by Firefox depends on which version of Firefox you're using.

For the current versions of Firefox, "Firefox Crash Reporter" is Firefox's crash reporting feature. With this feature, you have the option to include Personal Information (including your email address), Potentially Personal Information (including your IP address and the URL of the site you were visiting when Firefox crashed), and a comment. Firefox Crash Reporter also sends a list of all add-ons that you were using at the time of the crash, the time since (i) the last crash, (ii) the last install, and (iii) the start-up of the program. For Firefox 3.0.0 – 3.0.5, Firefox Crash Reporter also collects Potentially Personal Information to Mozilla in the form of a unique alphanumeric value to distinguish individual Firefox installs. This value is not assigned to users of Firefox 3.0.6 and subsequent versions. Mozilla only makes Non-Personal Information (i.e., generic information about your computer, the stack trace, and any comment given by the user) available in the public reports available online at



To close the dialog, the user can either tap the close button on the pop-up or tap out.

3 *Crash reporter setting*



Startup

When UX starts, show

tabs from last time

Character Encoding

Show encoding options on the App Bar

Off

Clear Private Data

Clear your browsing history, passwords, cookies, and form data on this device

☒ Browsing history

☐ Other data (passwords, cache, cookies, etc)

Clear

Remember Passwords

On

Crash Reporter

UX submits crash reports to help Mozilla make your browser more stable and secure

On

Do Not Track

Tell sites:

☒ I do not want to be tracked

☐ Nothing about my tracking preferences

☐ I want to be tracked

Note:

Unlike FxOS, FX Metro doesn't support per crash opt-in at this moment.

Allowing Firefox Metro to "Always ask each time a crash occurs" can't add any more user value here.

If the users chose to submit crash reports at the First-time crash message dialog, Crash Reporter option will be turned ON.

If the users chose not to submit crash reports, Crash Reporter option will be turned OFF.