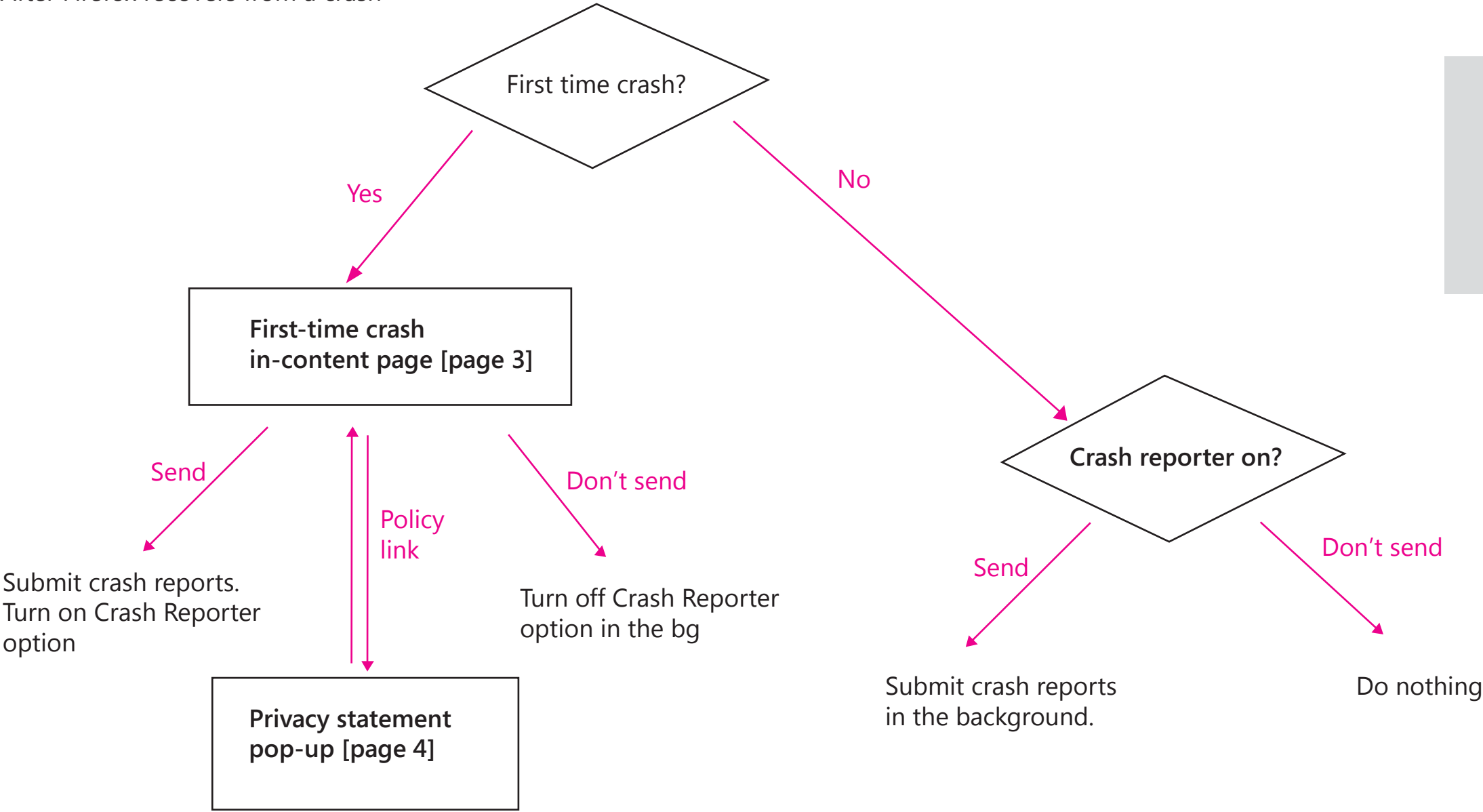




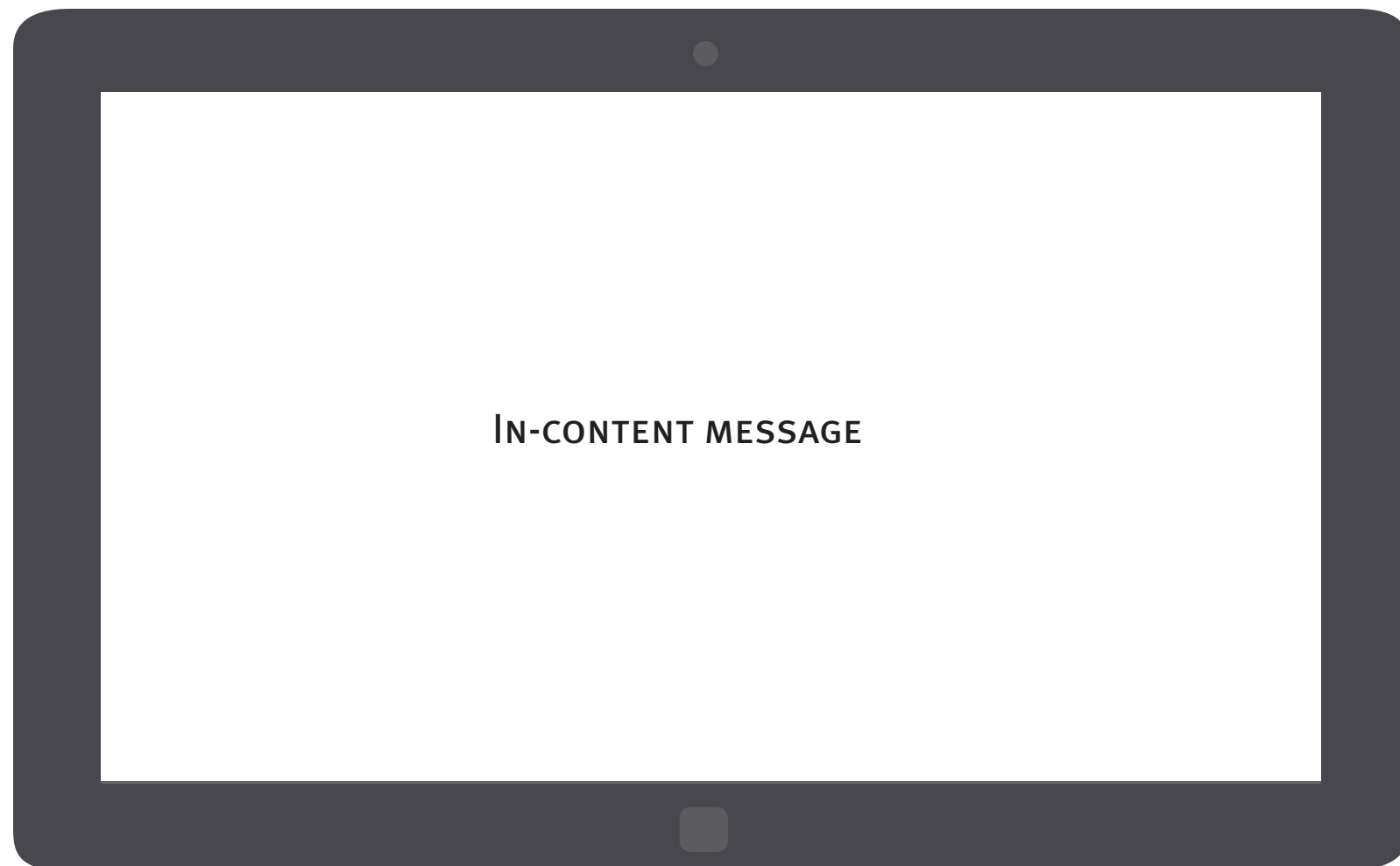
Interaction Flow

After Firefox recovers from a crash



If the users close the dialog page without making any choice, Firefox Metro will display the crash report again next time it crashes.

1 *First-time crash message dialog*



The crash reporting message is an in-content page that shows up once FX Metro recovers if the users have not made a choice on their crash reporting choice.

Information to convey

Title:

- Main instruction

Content:

- Why the users are prompted with this crash message dialog
- Why a preference is needed from the users
- How to change the preferenc
- More info

Button:

- Opt in
- Opt out

1 *In-content crash reporting message*

Would you like to send Mozilla crash reports?

We are sorry, Nightly just recovered from a crash. Sending crash reports will help Mozilla make Nightly more stable and secure. You can always change your preference in Settings/Options.

[Privacy statement of crash-reporting feature](#)

Send reports

Don't send

Apply a consistent visual style for the in-content page on Firefox Metro with desktop

Using grey background to indicate the message is coming from the application as part of the chrome
And use the same typeface and font color as the desktop in-content page

2 *Privacy statement pop-up*

Would you like to send Mozilla crash reports?

Privacy statement of crash-reporting feature



Firefox has a crash-reporting feature that sends a report to Mozilla when Firefox crashes. Mozilla uses the information in the crash reports to diagnose and correct the problems in Firefox that caused the crash. Though this feature starts automatically after Firefox crashes, it does not send information to Mozilla until you explicitly authorize it to do so. By default, this feature sends a variety of Non-Personal Information to Mozilla, including the stack trace (a detailed description of which parts of the Firefox code were active at the time of the crash) and the type of computer you are using. Additional information is collected by the crash reporting feature. Which crash reporting feature is used and what additional information collected by Firefox depends on which version of Firefox you're using.

For the current versions of Firefox, "Firefox Crash Reporter" is Firefox's crash reporting feature. With this feature, you have the option to include Personal Information (including your email address), Potentially Personal Information (including your IP address and the URL of the site you were visiting when Firefox crashed), and a comment. Firefox Crash Reporter also sends a list of all add-ons that you were using at the time of the crash, the time since (i) the last crash, (ii) the last install, and (iii) the start-up of the program. For Firefox 3.0.0 – 3.0.5, Firefox Crash Reporter also collects Potentially Personal Information to Mozilla in the form of a unique alphanumeric value to distinguish individual Firefox installs. This value is not assigned to users of Firefox 3.0.6 and subsequent versions. Mozilla only makes Non-Personal Information (i.e., generic information about your computer, the stack trace, and any comment given by the user) available in the public reports available online at <http://crash-stats.mozilla.com/>.

[Learn more about Nightly privacy policy](#)

3 *Crash reporter setting*



Startup

When UX starts, show

Character Encoding

Show encoding options on the App Bar

Off ☐

Clear Private Data

Clear your browsing history, passwords, cookies, and form data on this device

☒ Browsing history

☐ Other data (passwords, cache, cookies, etc)

Clear

Remember Passwords

On ☒

Crash Reporter

UX submits crash reports to help Mozilla make your browser more stable and secure

On ☒

Do Not Track

Tell sites:

☒ I do not want to be tracked

☐ Nothing about my tracking preferences

☐ I want to be tracked

Note:

Unlike FxOS, FX Metro doesn't support per crash opt-in at this moment.

Allowing Firefox Metro to "Always ask each time a crash occurs" can't add any more user value here.

If the users chose to submit crash reports at the First-time crash message dialog, Crash Reporter option will be turned ON.

If the users chose not to submit crash reports, Crash Reporter option will be turned OFF.

In-content page design on Firefox desktop

