

Bug 780124

Testing of versions found in Comment 26 by WADA (as requested by Wayne Mery in Comment 94)

```
WADA ▾ 2012-09-28 20:40:56 PDT Comment 26 [wrap] [reply] [-]

Correct Regression window: (checked by thunderbird-14.0a1.en-US.win32.zip)
(a) Good :
    /pub/mozilla.org/thunderbird/nightly/2012/03/2012-03-19-03-00-43-comm-central
(b) Bad :
    /pub/mozilla.org/thunderbird/nightly/2012/03/2012-03-20-03-01-27-comm-central

Correct Changes pushed after 2012-03-19 00:00:00, before 2012-03-20 06:00:00.
> http://hg.mozilla.org/comm-central/pushloghtml?startdate=2012-03-19+00%3A00&enddate=2012-03-20+06%3A00

Sorry for mistake.

Regression by patch for bug-554944 (Target Milestone: Thunderbird 14.0)?
```

TL;DR: yes, this is correct

I have been able to duplicate this issue by sending an unauthenticated mail via a different SMTP server (port 25) (for instance smtp.telenet.be), while on a network served by ISP Belgacom Skynet in Belgium (where the SMTP server should be relay.skynet.be).

Test 1: version from 19/03



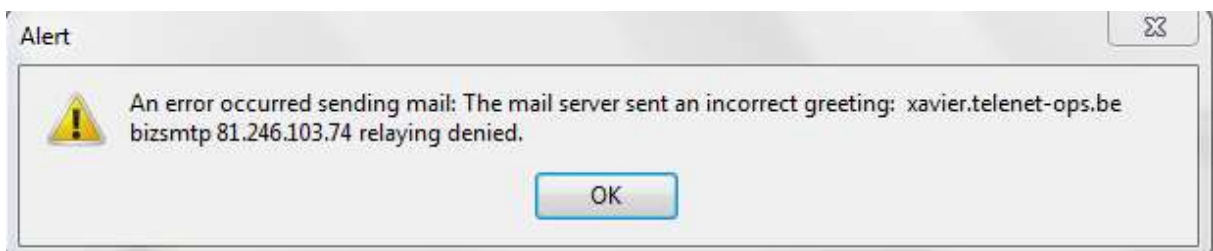
Sending the mail in this version gives two error dialogs, and then brings me back in the message composer window. See screenshots of the error dialogs below.



Test 2: Version from 20/03:



Sending the mail in this version only gives the first error message, and then the mail is dumped in the SENT mail folder (!) and the message composition window is closed.



This conclusively proves that WADA's statement about the regression window in comment 26 is correct.