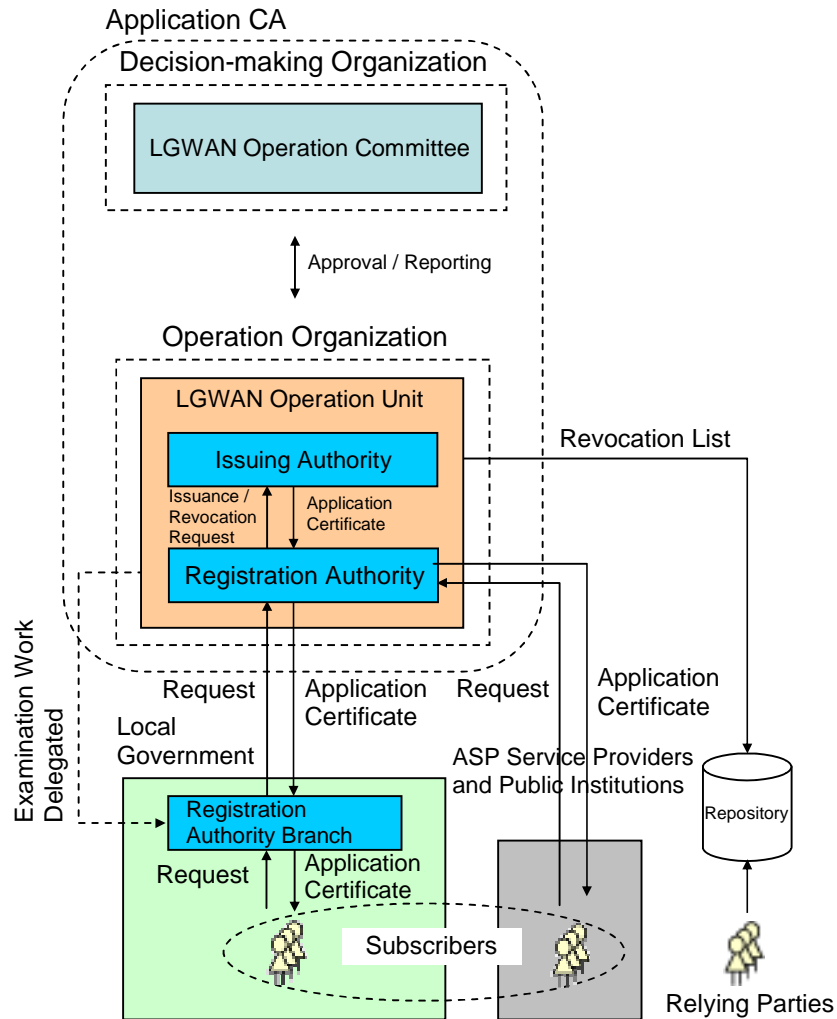


LGPKI アプリケーション CA CP/CPS 抜粋 (英文)

1.3.1 Operation Organization

The organization and structure chart is as follows.

The organization which comprises the Application CA is the decision-making organization and operation organization, as shown in Figure 1-1.



The organization units and roles are as follows.

Table 1-1 Organization Units and Roles

Organization Unit	Roles
LGWAN Operation Committee	<p>As the decision-making organization for operation of the Application CA, decides the following matters.</p> <ul style="list-style-type: none"> • Establishment and revision of CP/CPS for the Application CA • Response when CA private keys are endangered • Emergency response during disasters, etc. • Other important matters concerning operation of the Application CA
LGWAN Operation Unit	<p>As the operating organization for the Application CA, mainly performs the following work.</p> <ul style="list-style-type: none"> • Reports on operating status to the LGWAN Operation Committee • Audits the Registration Authority Branches • Operation of the Application CA • Operation and maintenance of CA system (Registration Authority) • Receive and examine requests for issuance, renewal, and revocation of application certificates * For requests from local governments for issuance, renewal, and revocation of application certificates, part of the reception and examination work will be delegated to Registration Authority Branches • Requests for issuance and revocation of application certificates (Issuing Authority) • Processing for issuance and revocation of application certificates <p>As the operation organization, the following Certification Authority operating staff shall be allocated. Certification Authority Chief, Certification Authority system Chief, Keys Manager, Receptionist, Examiner, Examination Approver, IA Operator, RA Operator, Repository Operator, Audit Log Investigator, and Registration Authority Branch Auditor.</p>
Registration Authority Branches	<p>These are organizations prepared in each local government, in order to perform delegated work as determined in Basic Framework for operation of Local Public Organization Certificate Infrastructure.</p> <p>These receive delegated work from the LGWAN Operation Unit, and, as local governments, perform reception and examination work for requests from subscribers regarding certificate issuance, renewal and revocation.</p> <p>The following staff are allocated: Registration Authority Branch Chief, Receptionist, Examiner, and Examination Approver.</p>

Organization Unit	Roles
Subscribers	These are application certificate holders belonging to local governments, ASP service providers, and public institutions. Subscribers use application certificates in compliance with this CP/CPS.
Relying Parties	Relying parties are residents, companies, local governments etc. They check the validity of application certificates according to the revocation list (below, “CRL/ARL”).

3.1.8 Organizational Identification

For procedures to request application certificates, the Registration Authority or Registration Authority Branch shall use prescribed procedures to confirm the existence and identity of the organization to which the subscriber belongs.

3.1.9 Identification of Individuals

For procedures to request application certificates, the Registration Authority or Registration Authority Branch shall use prescribed procedures to confirm the existence and identity of the subscriber.

7.1 Certificate Profile

The certificate profile is determined in the Profile Design document.

7.2 CRL Profile

The CRL/ARL profile is determined in the Profile Design document.

証明書及び CRL プロファイルについては、下記の URL の 3 6 頁以降を参照してください。

LGPKE プロファイル設計書

URL : http://www.lgpki.jp/Profile/C-6-4-4_LGPKE_Profile20081022.pdf