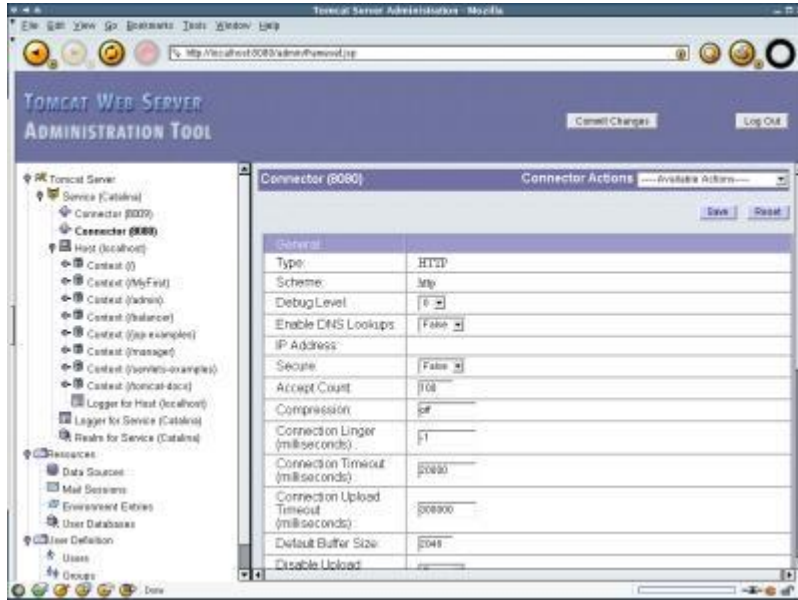


</tomcat-users>

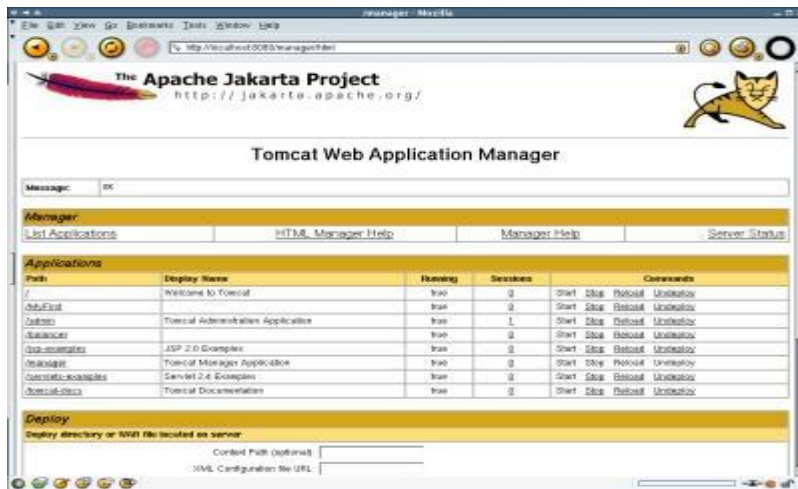
Save the file, start Tomcat and open a browser. You should be able to access the Administration Tool web application by clicking on the "Tomcat Administration" link on the left sidebar. You will be presented with a login screen. Just type in your Tomcat Administrator username and password, and you should be able to enter the administration tool GUI. An example of this GUI is shown below. The Administration Tool has collapsible menus on the left. Click on any of the icons in the left pane to display information and settings in the right pane. Depending on the specifications of your server, the display of settings and information in the right pane can be very slow ! You have to be patient and restrain your urge to keep clicking if the system seems unresponsive.

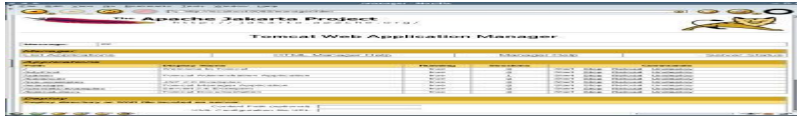


Tomcat Administration Tool

5.2. The Manager Web Application

You can access the Manager Web Application by clicking the "Tomcat Manager" link in the left sidebar of the default Tomcat page. This will display a GUI that allows you to view the status of your installed web applications and even deploy new web applications. There is also a link to the "HTML Manager Help" which can give you more information on using the Manager Web Application.





Tomcat Manager Web Application

The Manager web application also provides a way to install a new web application, reload it, start and stop it, and many other functions by merely passing a URL. For example, if we wanted to list the applications currently deployed in Tomcat, we could open a browser and key in [http://hostname.domain.com:\[port\]/manager/list](http://hostname.domain.com:[port]/manager/list), and it will return the list that we require.

5.3. Status Web Application

Finally, we have the Status web application, which displays the status of the Tomcat server, such as the memory utilization of the JVM, the version of JVM being run and the number and status of threads, among other parameters. This tool is new in Tomcat 5 and can be used to check if your Tomcat server is running low on system resources.



Status Web Application

[<<< Previous](#)
Deploying Web Applications

[Home](#)

[Next >>>](#)
Customizing Tomcat