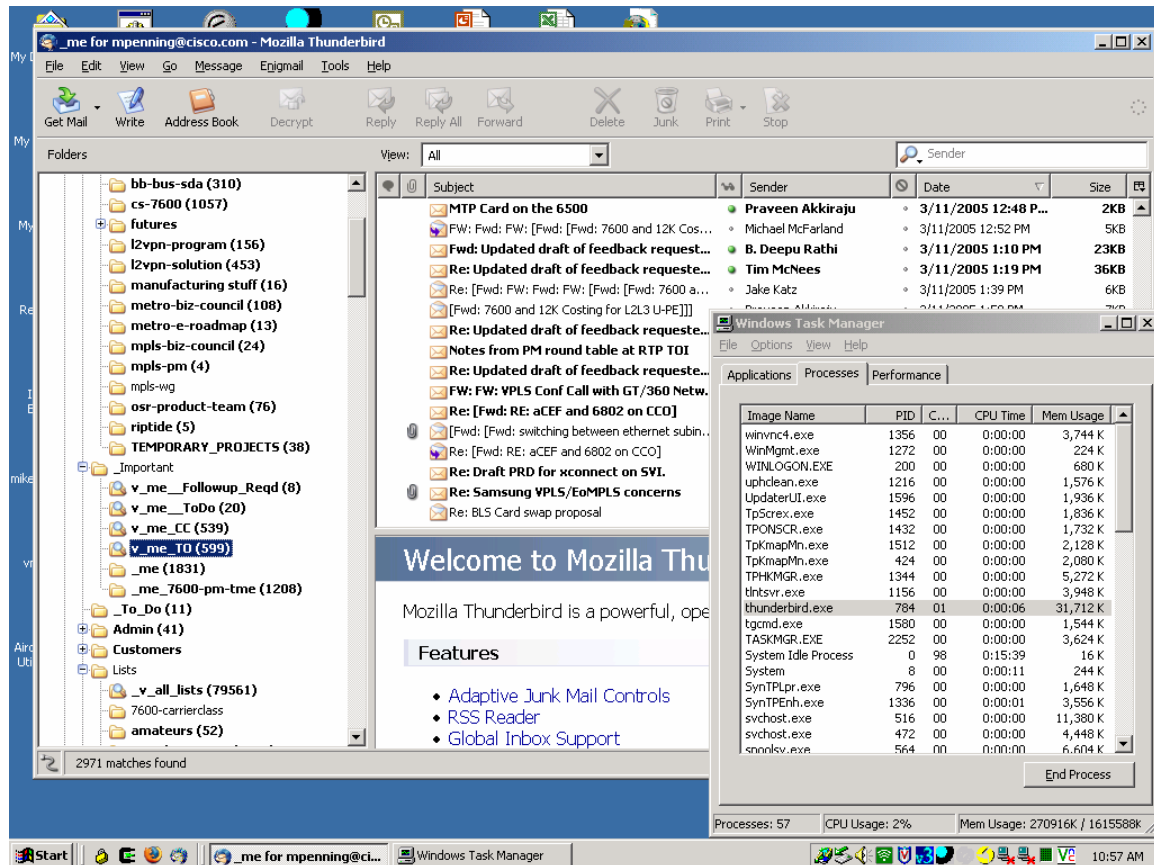


This is a snapshot of my desktop right after I open Thunderbird



Thunderbird.exe uses 31,712K of memory

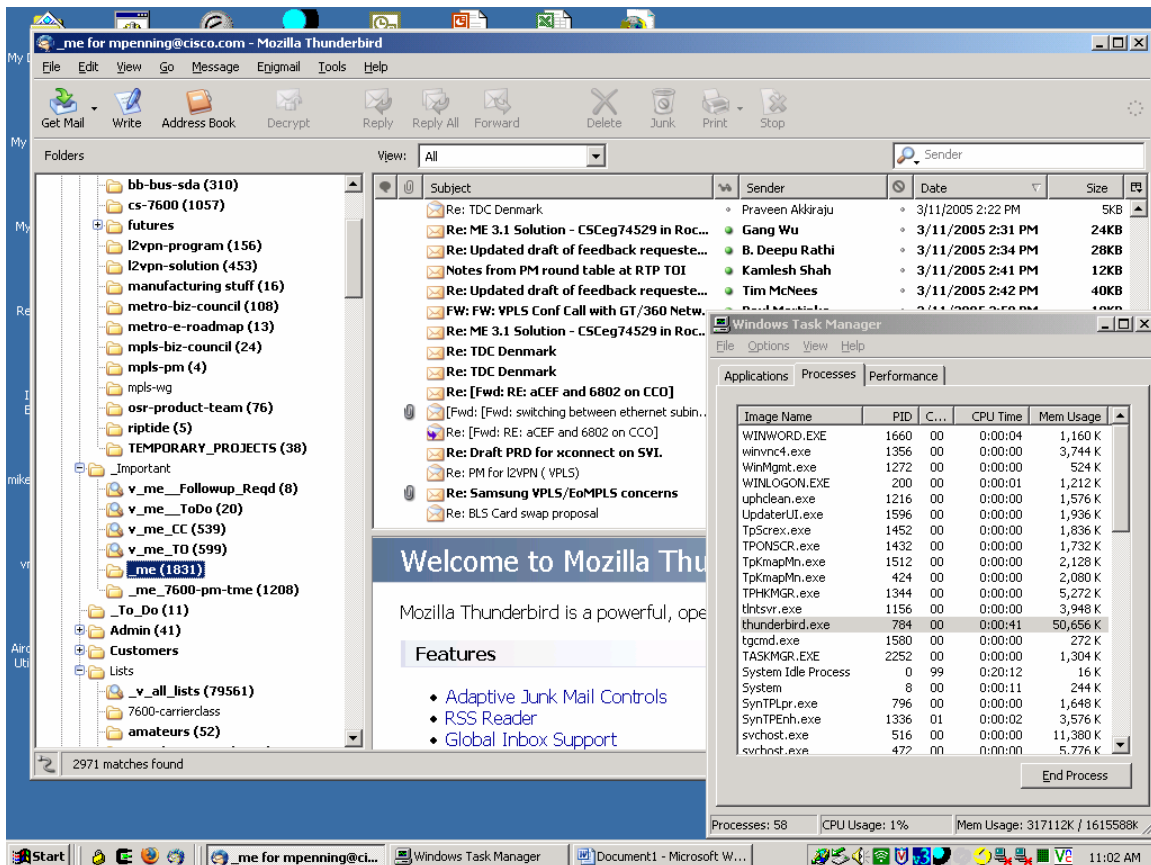
Now I switch from looking at _v_me_TO to _me

The screenshot shows the Mozilla Thunderbird email client interface. The left sidebar displays a folder tree with various folders, including 'v_me' and 'v_me_TO'. The main pane shows a list of email messages. Overlaid on the Thunderbird window is the Windows Task Manager, specifically the 'Processes' tab. The task manager lists running processes, their PIDs, CPU usage, and memory usage. The process 'thunderbird.exe' is highlighted, showing it is using 31,932 K of memory. The task manager also shows other running processes like 'WINWORD.EXE', 'winvnc4.exe', and 'System Idle Process'.

Image Name	PID	CPU	CPU Time	Mem Usage
WINWORD.EXE	1660	00	0:00:02	1,280 K
winvnc4.exe	1356	00	0:00:00	3,744 K
WinMgmt.exe	1272	00	0:00:00	524 K
WINLOGON.EXE	200	00	0:00:00	808 K
uphclean.exe	1216	00	0:00:00	1,576 K
UpdaterUI.exe	1596	00	0:00:00	1,936 K
TP5screx.exe	1452	00	0:00:00	1,836 K
TPONSCR.exe	1432	00	0:00:00	1,732 K
TpKmapMn.exe	1512	00	0:00:00	2,128 K
TpKmapMn.exe	424	00	0:00:00	2,080 K
TPHKMGR.exe	1344	00	0:00:00	5,272 K
tintsvr.exe	1156	00	0:00:00	3,948 K
thunderbird.exe	784	00	0:00:07	31,932 K
tgcmd.exe	1580	00	0:00:00	272 K
TASKMGR.EXE	2252	00	0:00:00	1,300 K
System Idle Process	0	99	0:17:46	16 K
System	8	00	0:00:11	244 K
SynTPLpr.exe	796	00	0:00:00	1,648 K
SynTPEnh.exe	1336	00	0:00:01	3,576 K
svchost.exe	516	00	0:00:00	11,380 K
svrhost.exe	472	00	0:00:00	5,776 K

Thunderbird.exe uses 31,932K of memory

This is after I have switched back and forth between the folders about 20-ish times (I lost track :-)...



Note that I have not checked mail or done anything to increase memory usage beyond switching between folders.

Thunderbird.exe uses 50,656K of memory... I can replicate this issue infinitely...

I can also replicate this on my home PC (Windows XP, SP2) with a completely different mailbox. Furthermore, it seems that T-bird chews up memory from just checking the POP3 server... even if it is empty.