

ON A/C ALL

## Task 32-21-05-400-804-A01 Installation of the NLG Upper- Drag-Brace

### 1. General

- A. The maintenance procedure that follows is for the installation of the nose landing gear (NLG) upper drag brace (written as the "drag brace" in this procedure). The drag brace is installed between the NLG wheel well structure and the shock strut assembly.

### 2. Job Set-Up Information

ON A/C ALL

A.

#### Tools and Equipment

DESIGNATION
Commercially Available Wrench - Torque, 0 to 75 lbf-in (0 to 8 N·m)
Commercially Available Grease Gun - Multi Heads
Commercially Available Strap Wrench

END ON A/C ALL

ON A/C ALL

B.

#### Consumable Materials

CONSUMABLE
04-010 Grease, Aeroshell #33
11-007 Methyl ethyl ketone (MEK)

END ON A/C ALL

ON A/C ALL

C.

#### Parts

NAME	REFERENCE
Drag brace	<a href="#">ON A/C 19001-19250</a> <a href="#">AIPC 32-21-05-01</a>
	<a href="#">END ON A/C 19001-19250</a>
	<a href="#">ON A/C 15001-15990</a> <a href="#">AIPC 32-21-05-01</a>
	<a href="#">END ON A/C 15001-15990</a>
	<a href="#">ON A/C 10001-10999</a> <a href="#">AIPC 32-21-05-01</a>

NAME	REFERENCE
	<a href="#">END ON A/C 10001-10999</a>

END ON A/C ALL

ON A/C ALL

D.

Reference Information

REFERENCE	DESIGNATION
ON A/C ALL <a href="#">TASK 07-11-01-586-801</a>	Lowering of the Aircraft
END ON A/C ALL	
ON A/C ALL <a href="#">TASK 07-13-01-586-801</a>	Lowering at the Nose Jacking Point
END ON A/C ALL	
ON A/C ALL <a href="#">TASK 32-30-00-710-801</a>	Operational Test of the Landing-Gear Extension/Retraction System
END ON A/C ALL	
ON A/C ALL <a href="#">TASK 32-30-00-865-802</a>	Nose Landing Gear Extension and Retraction
END ON A/C ALL	
ON A/C ALL <a href="#">TASK 53-12-32-400-801</a>	Installation of the Flight Controls Access Panel (131AL/132AR)
END ON A/C ALL	

END ON A/C ALL

ON A/C ALL

E.

Standard Practices Information

REFERENCE	DESIGNATION
ON A/C ALL <a href="#">TASK 20-51-00-400-801</a>	Installation of Cotter Pins
END ON A/C ALL	
ON A/C ALL <a href="#">TASK 51-26-00-110-801</a>	Solvent Cleaning
END ON A/C ALL	
ON A/C ALL <a href="#">TASK 51-80-00-760-801</a>	Electrical Bonding Test
END ON A/C ALL	

END ON A/C ALL

### 3. Procedure

## 4. Close Out

---

ON A/C ALL

A. Remove all tools, equipment, and unwanted materials from the work area.

END ON A/C ALL

---

ON A/C ALL

B. Install the access panels that follow:

Panels		
PANEL	NAME	REFERENCE
131AL	Flight Controls Access Panel	<a href="#">ON A/C ALL</a> <a href="#">TASK 53-12-32-400-801</a> <a href="#">END ON A/C ALL</a>
132AR	Flight Controls Access Panel	<a href="#">ON A/C ALL</a> <a href="#">TASK 53-12-32-400-801</a> <a href="#">END ON A/C ALL</a>

END ON A/C ALL

---

ON A/C ALL

C. Do the lubrication of the drag brace (1) as follows:

(1) Connect the grease gun to the lubrication fittings (25).

(2) Apply the grease to the lubrication fittings (25) until the grease comes out.

END ON A/C ALL

---

ON A/C ALL

D. Do one of the procedures that follow :

(1) If the aircraft is lifted on jacks (at the three jacking points), do the operational test of the landing gear extension/retraction system (

[ON A/C ALL](#)

[TASK 32-30-00-710-801](#)

[END ON A/C ALL](#)

).

(2) If the aircraft is lifted at the nose jacking point only, do the nose landing gear extension and retraction (

[ON A/C ALL](#)

[TASK 32-30-00-865-802](#)

[END ON A/C ALL](#)

).

E. Do one of the procedures that follow to lower the aircraft:

- (1) If the aircraft is lifted on jacks (at the three jacking points), lower the aircraft (

ON A/C ALL

TASK 07-11-01-586-801

END ON A/C ALL

).

- (2) If the aircraft is lifted at the nose jacking point only, lower the aircraft (

ON A/C ALL

TASK 07-13-01-586-801

END ON A/C ALL

).

END ON A/C ALL

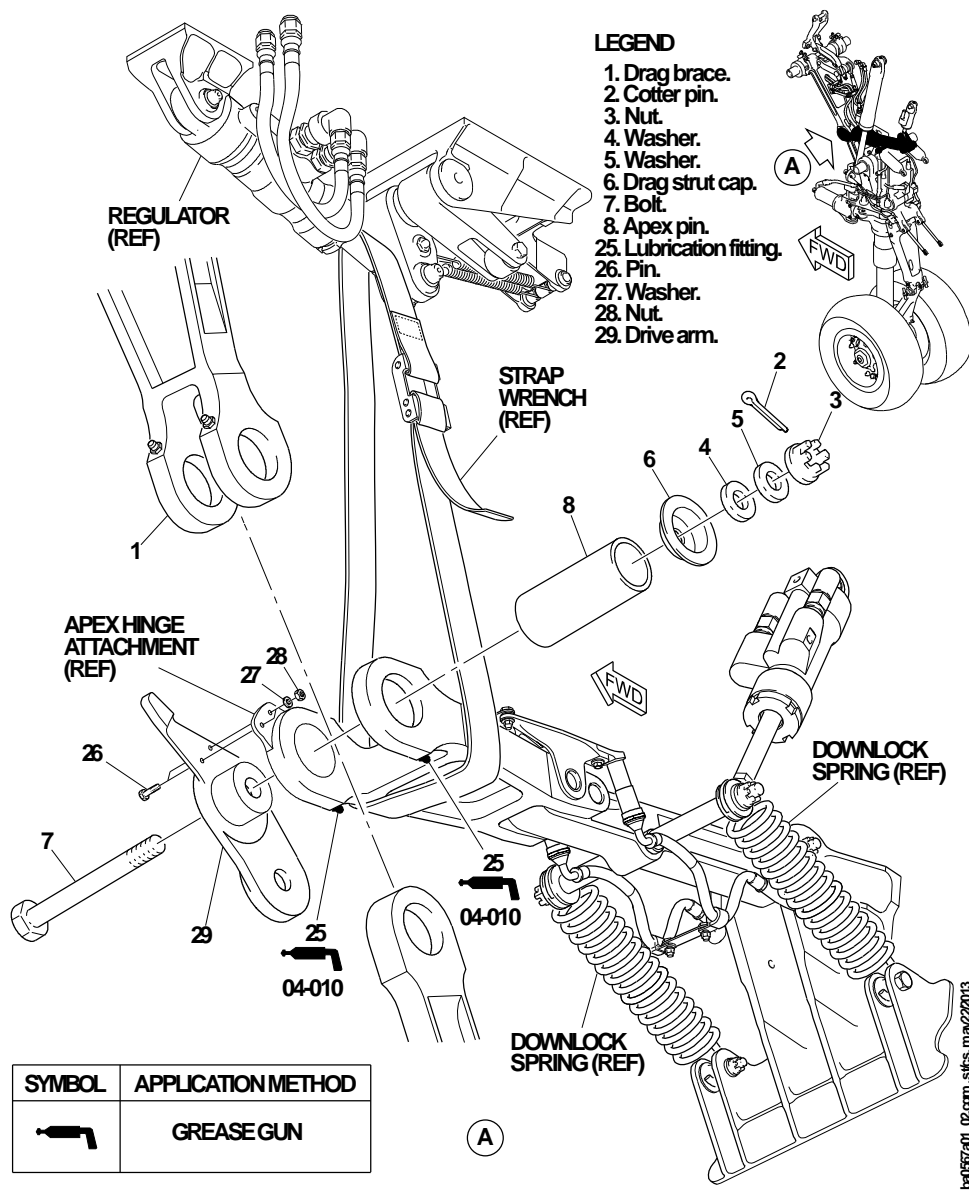
---

ON A/C ALL

## **NLG Upper-Drag-Brace**

---

ON A/C ALL

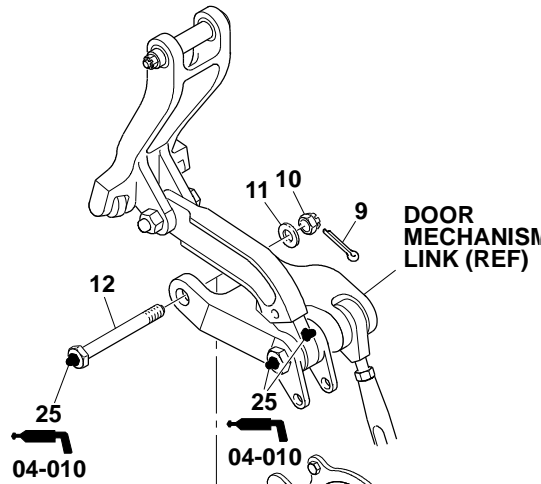
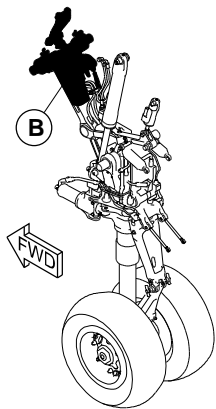


- LEGEND**
- 1. Drag brace.
  - 2. Cotter pin.
  - 3. Nut.
  - 4. Washer.
  - 5. Washer.
  - 6. Drag strut cap.
  - 7. Bolt.
  - 8. Apex pin.
  - 25. Lubrication fitting.
  - 26. Pin.
  - 27. Washer.
  - 28. Nut.
  - 29. Drive arm.

SYMBOL	APPLICATION METHOD
	GREASE GUN

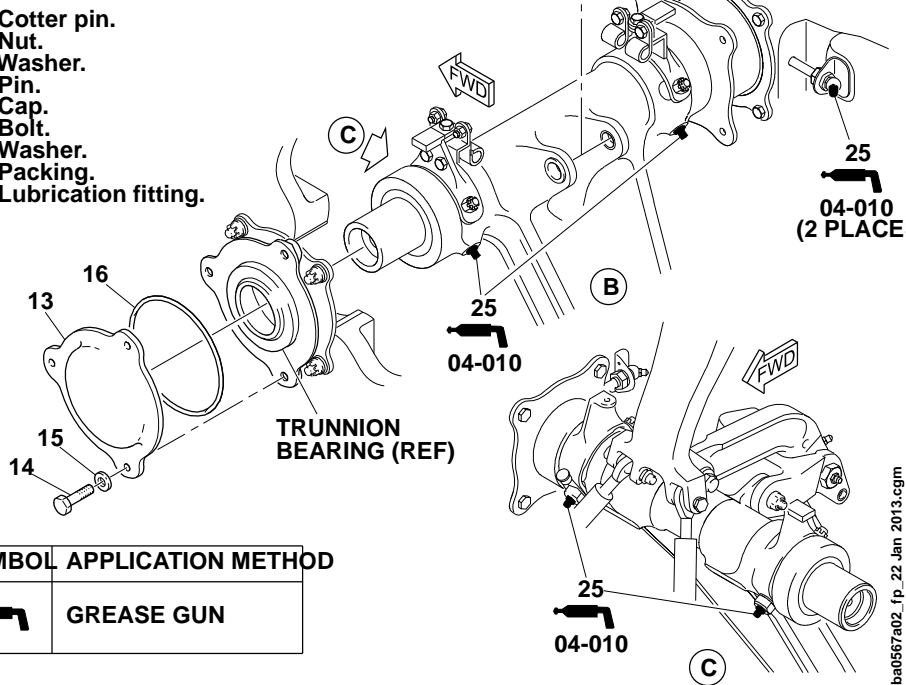
Sheet 1 / 32-21-05-991-812  
 END ON A/C ALL  
 ON A/C ALL


ba057a01\_02.cgm, stls, may/22/2013



**LEGEND**

- 9. Cotter pin.
- 10. Nut.
- 11. Washer.
- 12. Pin.
- 13. Cap.
- 14. Bolt.
- 15. Washer.
- 16. Packing.
- 25. Lubrication fitting.



SYMBOL	APPLICATION METHOD
	GREASE GUN

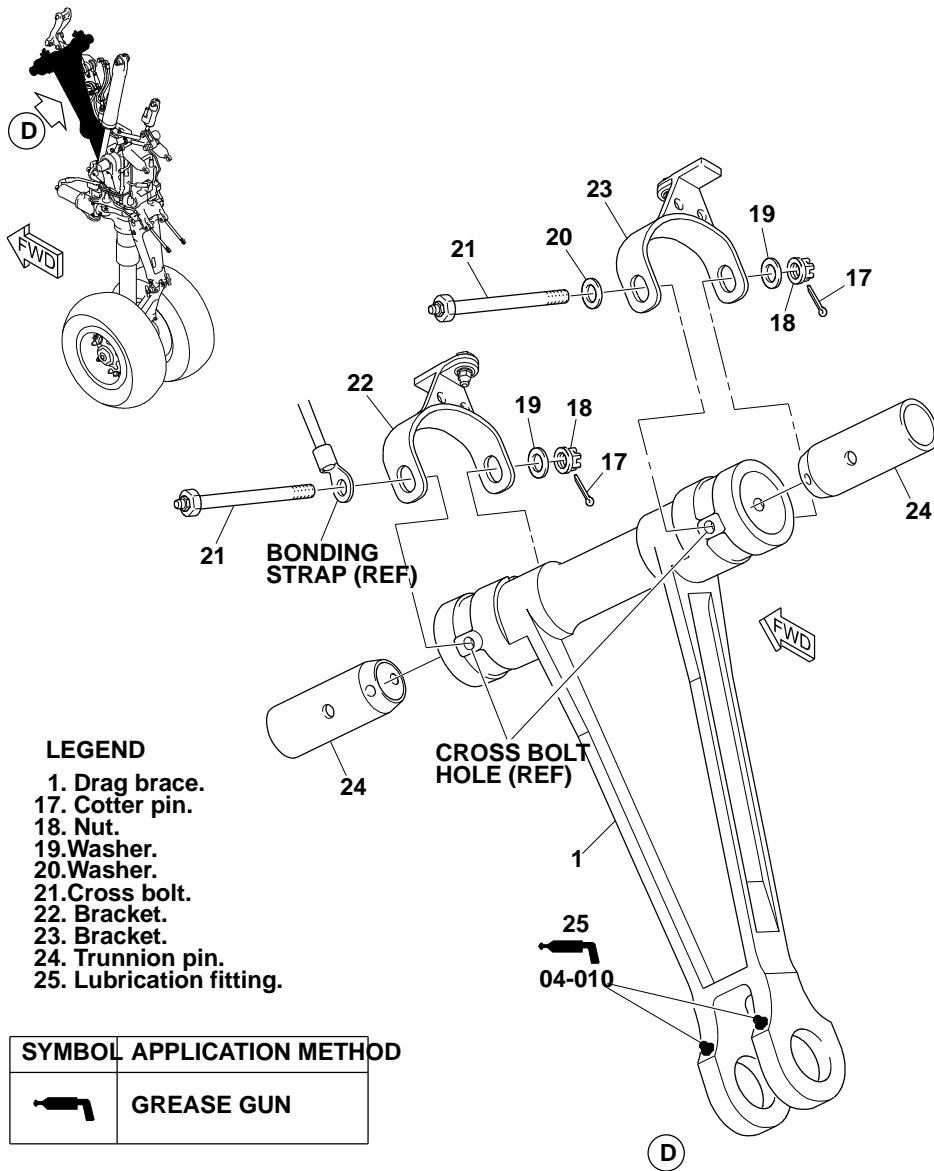
ba0567a02\_fp\_22\_Jan\_2013.cgim

Sheet 2 / 32-21-05-991-812

END ON A/C ALL

---

ON A/C ALL



b.a0567a03.cgm

Sheet 3 / 32-21-05-991-812

END ON A/C ALL

END ON A/C ALL

END ON A/C ALL