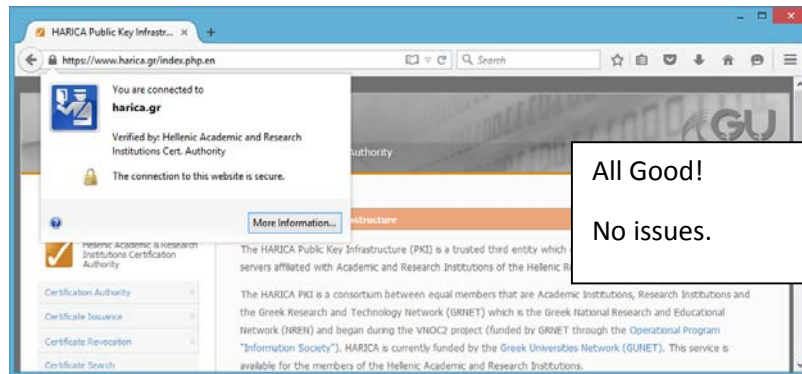


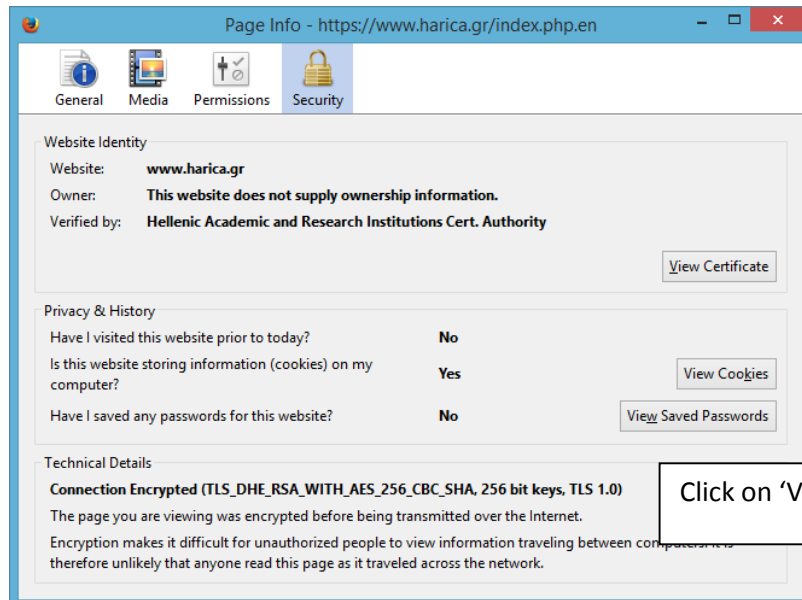
<https://www.harica.gr/index.php.en>

No connection issues.

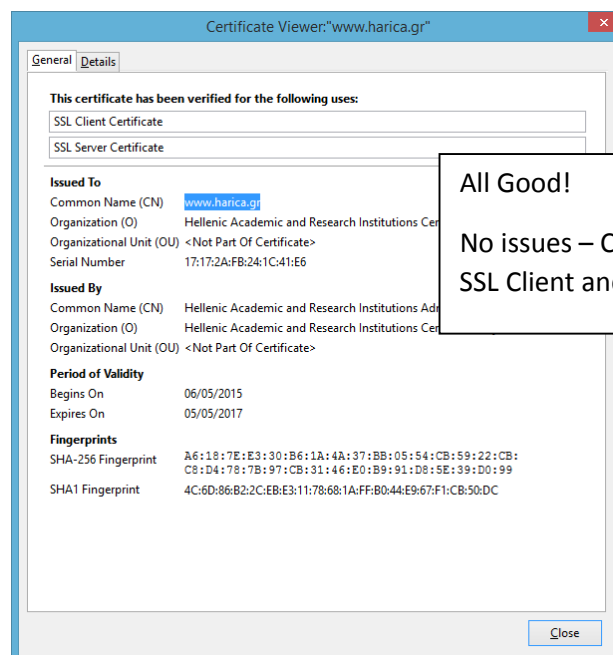


All Good!

No issues.

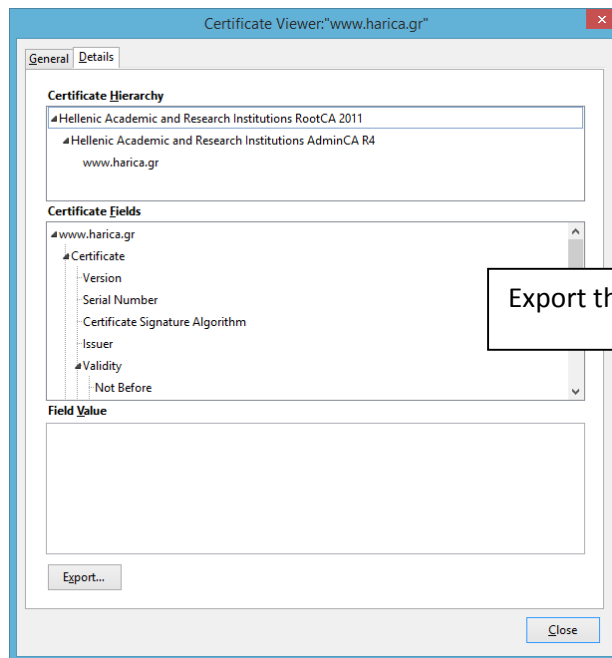


Click on 'View Certificate'

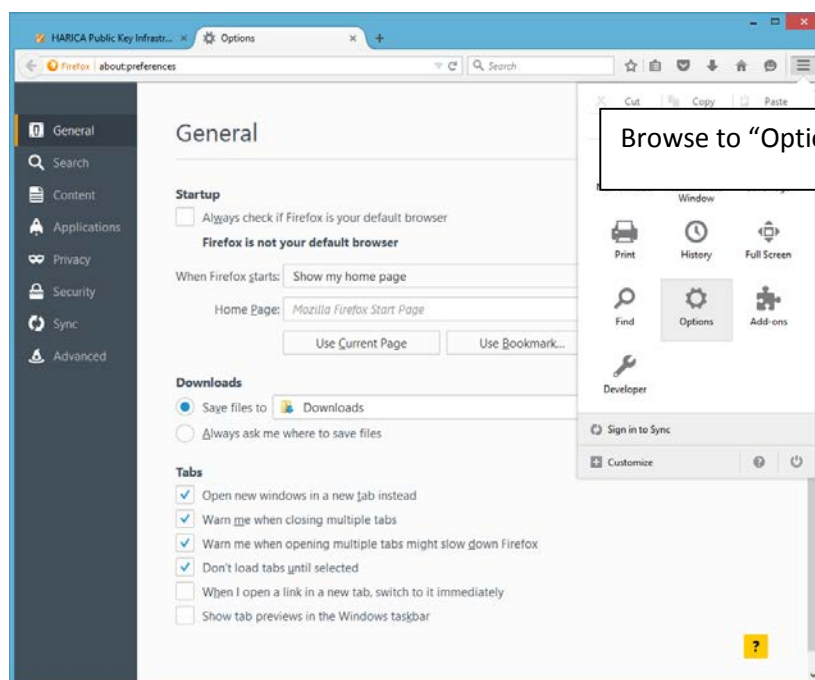


All Good!

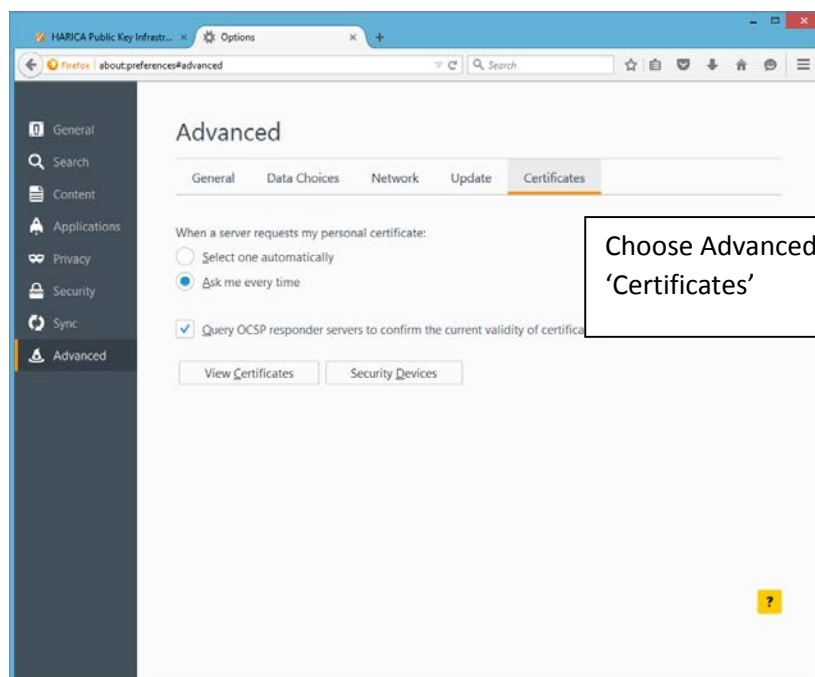
No issues – Certificate is verified for SSL Client and Server.



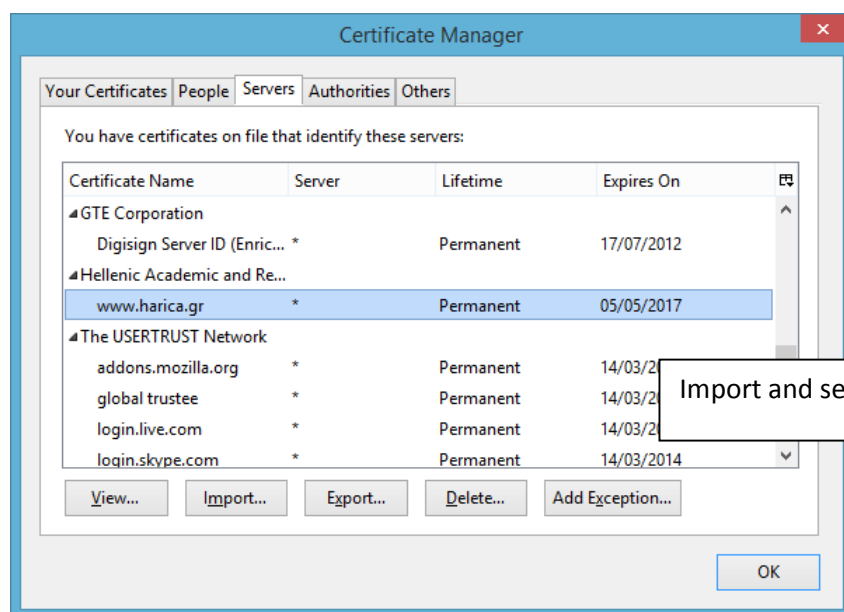
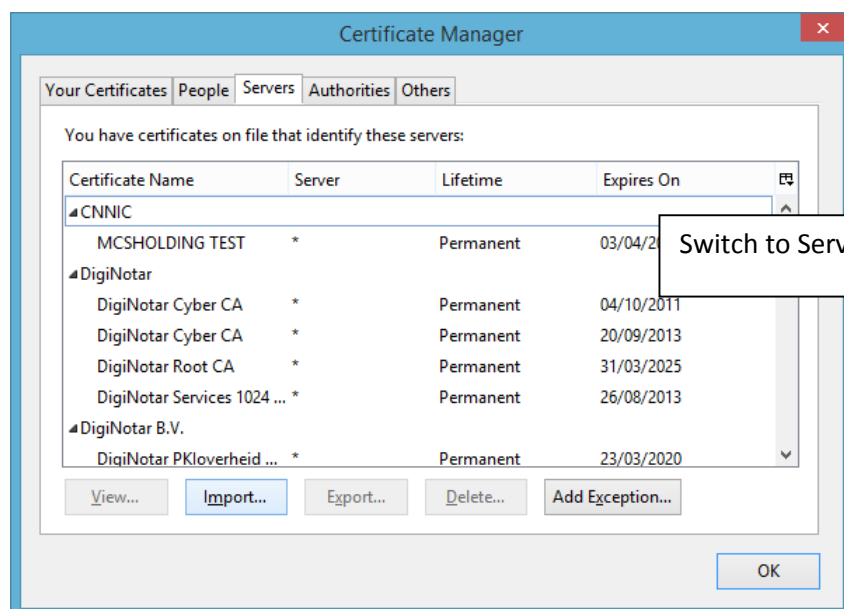
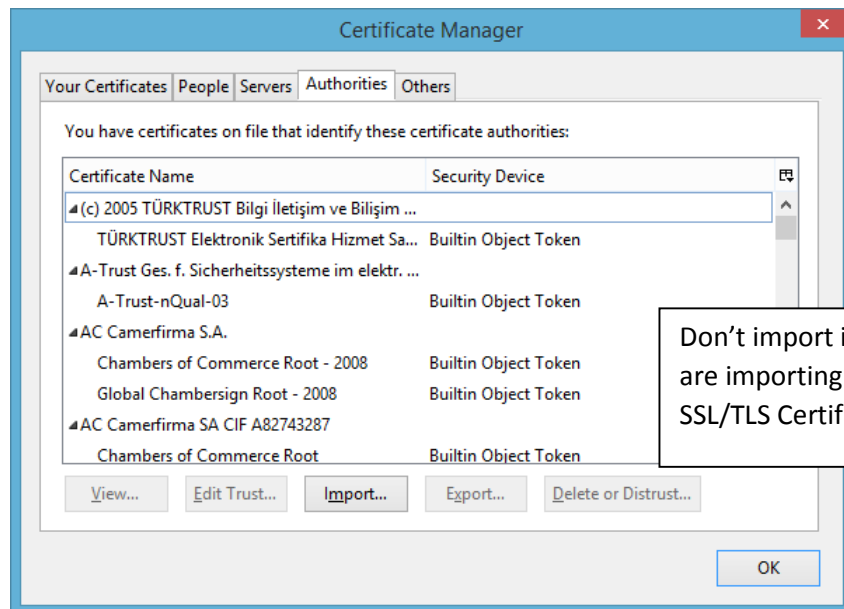
Export the end entity certificate

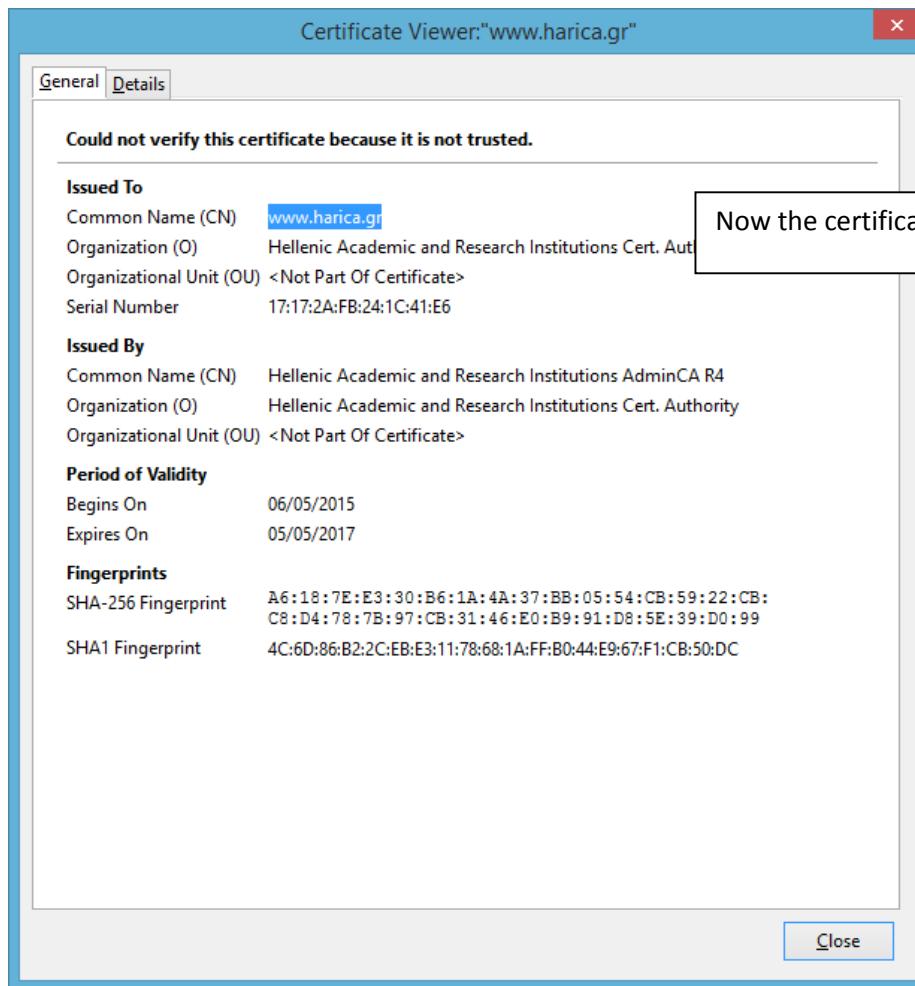


Browse to "Options"

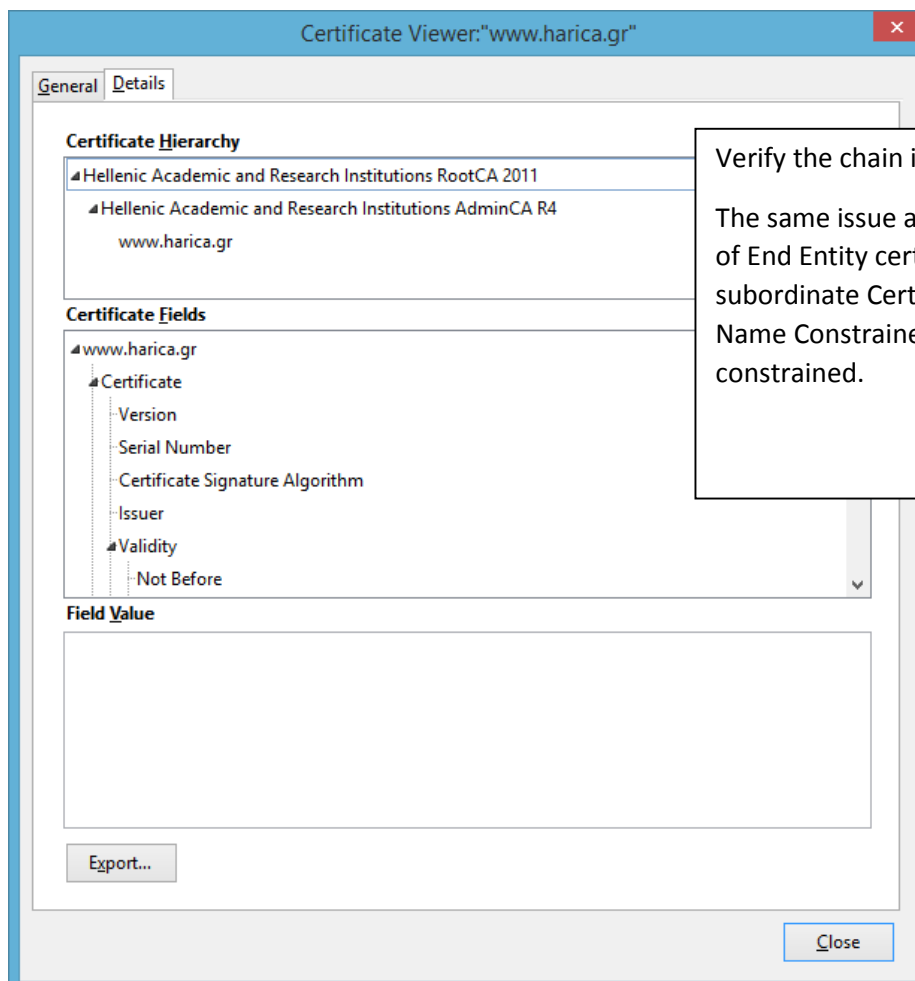


Choose Advanced and then 'Certificates'





Now the certificate is not trusted



Verify the chain is still recognized.

The same issue affects all examples of End Entity certificates with subordinate Certificates that are Name Constrained, EKU constrained.