



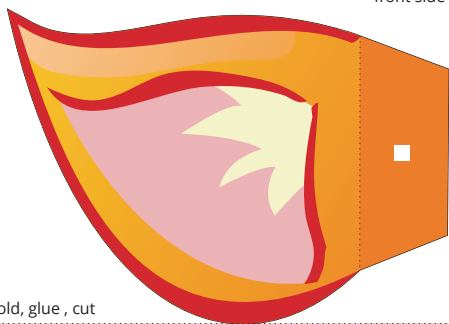
Don't forget the little **slice**
in the kumi's head (sides)
to glue the ears through.

Please insert & glue the ears
before you assembling the head

Don't forget **slice the hair**
in the kumi's head.

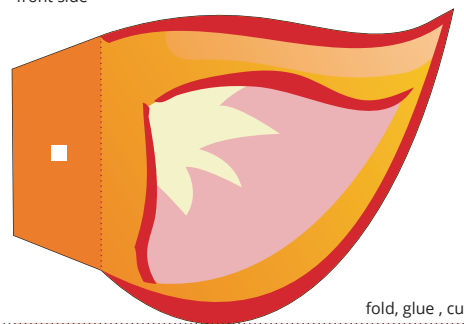
3. Head

1. Ear (Right)
front side



fold, glue, cut

2. Ear (Left)
front side



fold, glue, cut

kumi

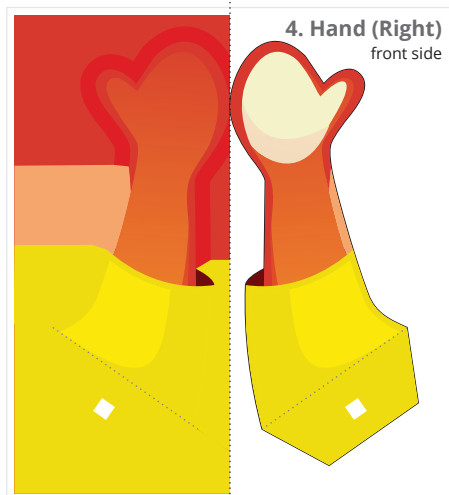


Mozilla Indonesia Community
<http://mozilla.web.id> • <http://kumi.web.id>

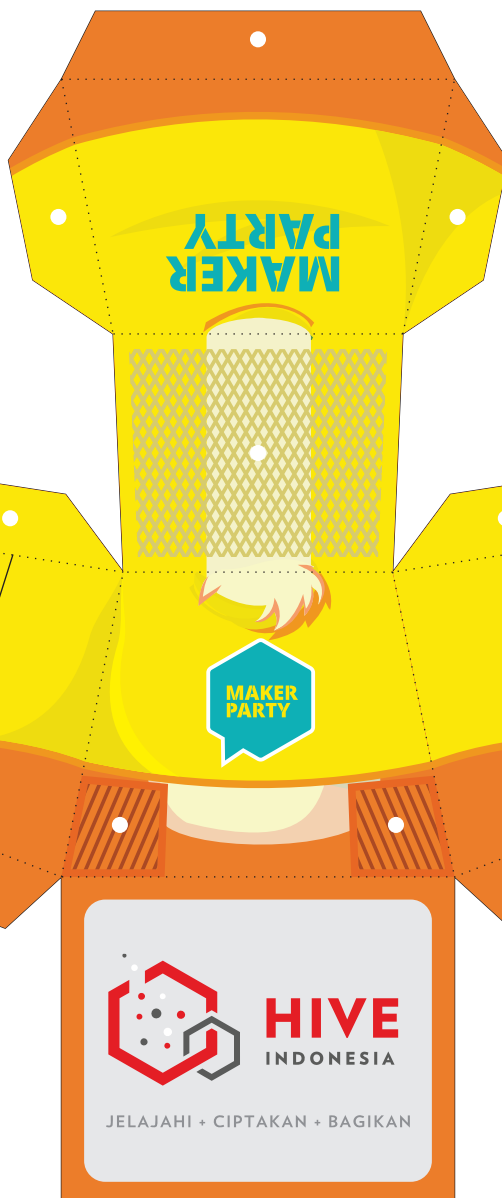
that would be great if you can stick this credits into the back side of tail :)

If you cut all the shapes and grease/pre-fold before glue-ing, the model will look better.

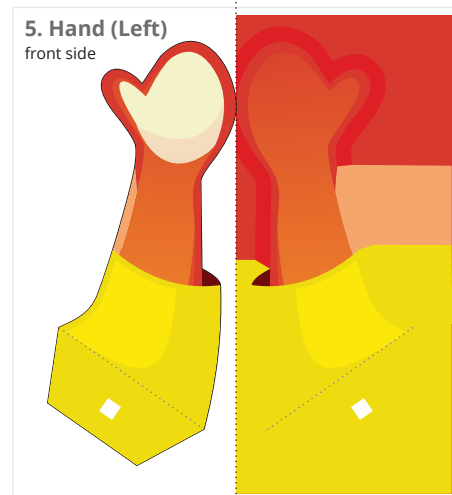
fold, glue, cut



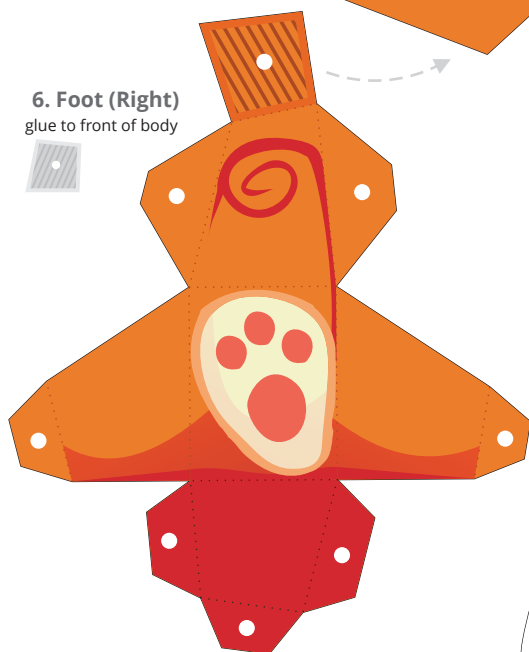
9. Body
Don't forget the little **slice in the body (sides)**
to glue the hand through.
Please insert & glue the hand before you assembling the body



fold, glue, cut



6. Foot (Right)
glue to front of body



7. Foot (Left)
glue to front of body



**MAKER
PARTY**



Legend :

- : glue
- : insert & glue

- : cut line
- : fold line (hill)
- - - - : fold line (valley)

Indonesian Mozilla Mascot Papertoy • papertoy by Faisal Azad • <http://salazad.com>

If you cut all the shapes and grease/pre-fold before glue-ing, the model will look better.



8. Tail
glue to body (back)