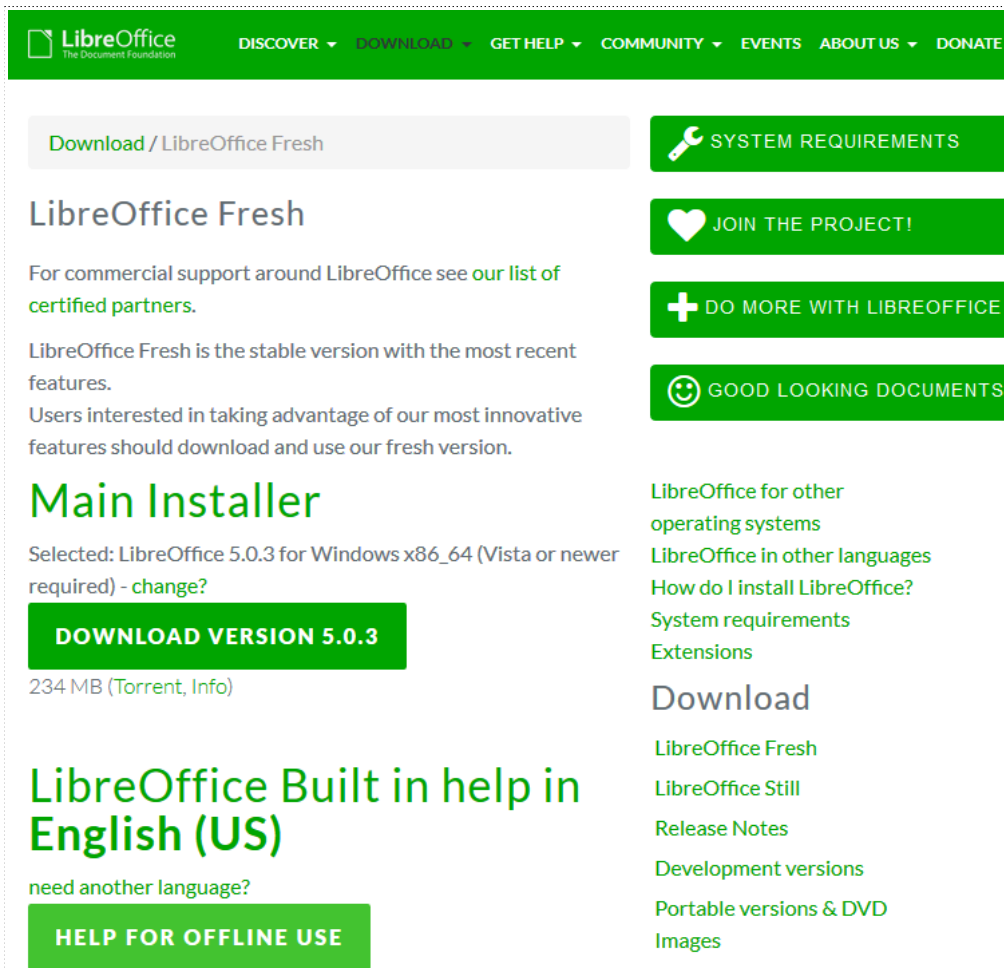


# 1. Main Program

## 1.1 Download

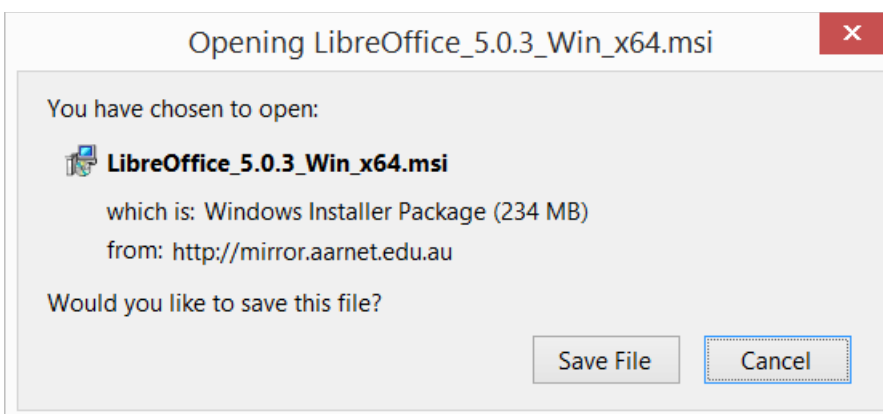
If you are unsure which Windows version you have, press **Win+Pause/Break** to open your system properties window. The LibreOffice Main Installer download page is shown below.

- [Click here](#) for the 32-bit version.
- [Click here](#) for the 64-bit version.



The screenshot shows the LibreOffice website's download page for Windows x64. The page has a green header with navigation links: DISCOVER, DOWNLOAD, GET HELP, COMMUNITY, EVENTS, ABOUT US, and DONATE. Below the header, there's a breadcrumb trail: Download / LibreOffice Fresh. The main content area is divided into two columns. The left column features the 'LibreOffice Fresh' section with a description, a 'Main Installer' section with a 'DOWNLOAD VERSION 5.0.3' button, and a 'LibreOffice Built in help in English (US)' section with a 'HELP FOR OFFLINE USE' button. The right column contains several green buttons: 'SYSTEM REQUIREMENTS', 'JOIN THE PROJECT!', 'DO MORE WITH LIBREOFFICE', and 'GOOD LOOKING DOCUMENTS'. Below these buttons are links for 'LibreOffice for other operating systems', 'LibreOffice in other languages', 'How do I install LibreOffice?', 'System requirements', and 'Extensions'. At the bottom of the right column is a 'Download' section with links for 'LibreOffice Fresh', 'LibreOffice Still', 'Release Notes', 'Development versions', 'Portable versions & DVD', and 'Images'.

Click the green button with white writing which says “Download Version 5.0.3”. If the download does not automatically begin, click 'Save File'. You are invited to give an optional donation.



## 1.2 Install

Open the folder where the Main Installer has been downloaded and double-click on the installer.



LibreOffice\_5.0.3\_Win\_x64.msi

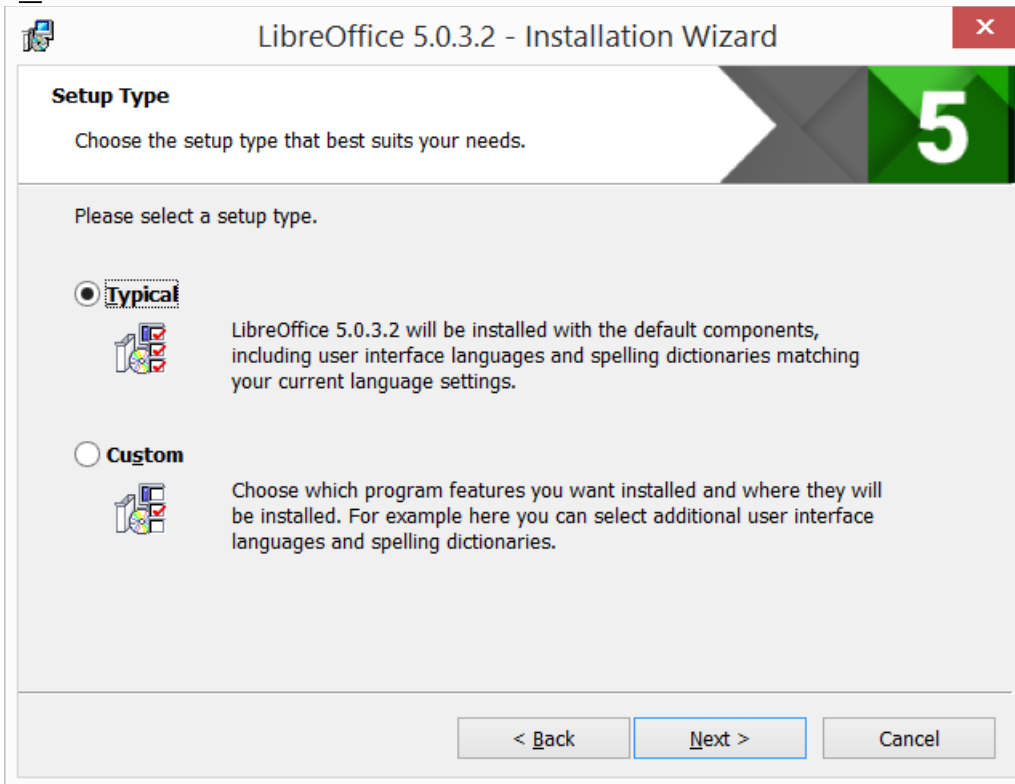
## 1.3 Welcome

The Installation Wizard Welcome dialog box opens advising that the installation process is about to be started. Click “Next >”



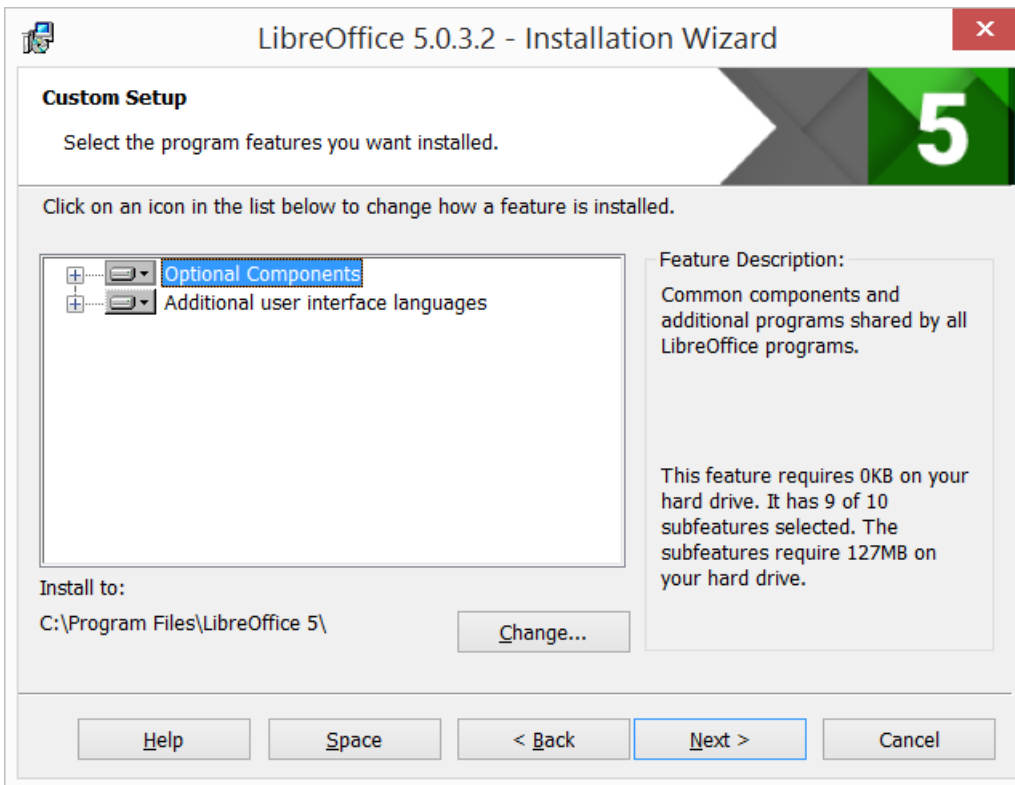
## 1.4 Setup Type

Another dialog box opens to give you a choice as to whether you want a default installation, or whether you want to choose special locations and components. If you want a default installation, just press “Next >”. If you want to make special choices, click on “Custom” and then press “Next >”.





## 1.5 Custom Setup

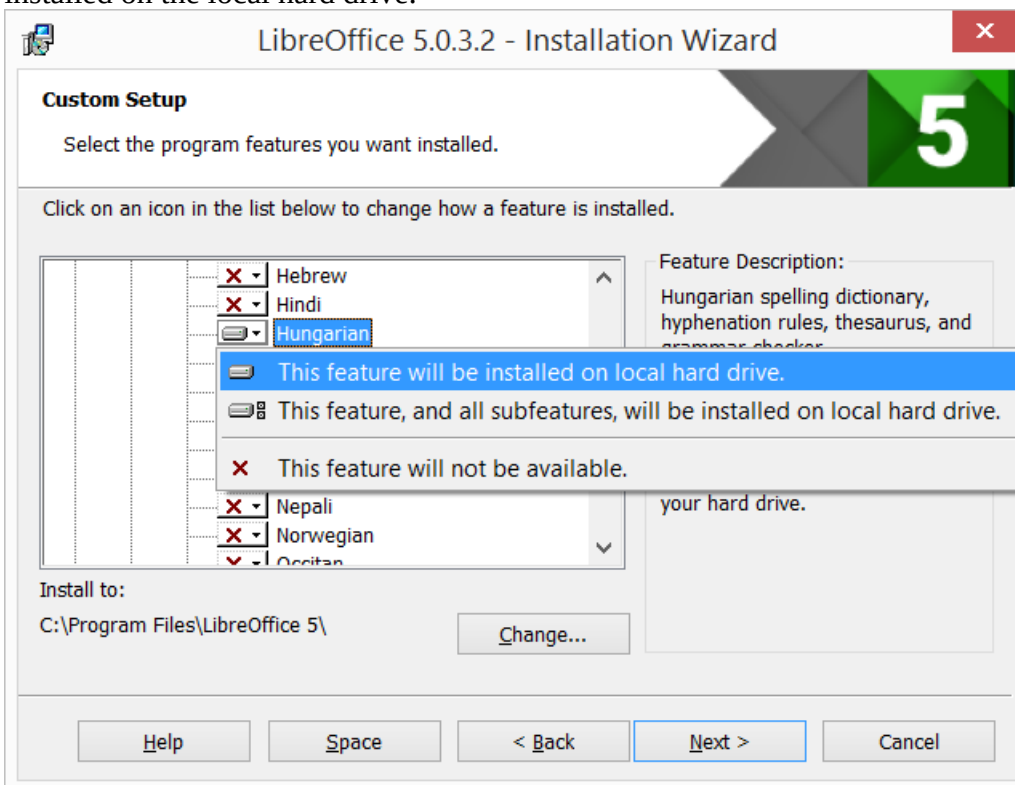
The Custom Setup enables changes to feature which will be installed.



If you would like to install the spelling dictionaries, hyphenation rules, thesauri and grammar checkers:

- Click on the  to the associated with Optional Components
- Click on the  to the associated with Dictionaries

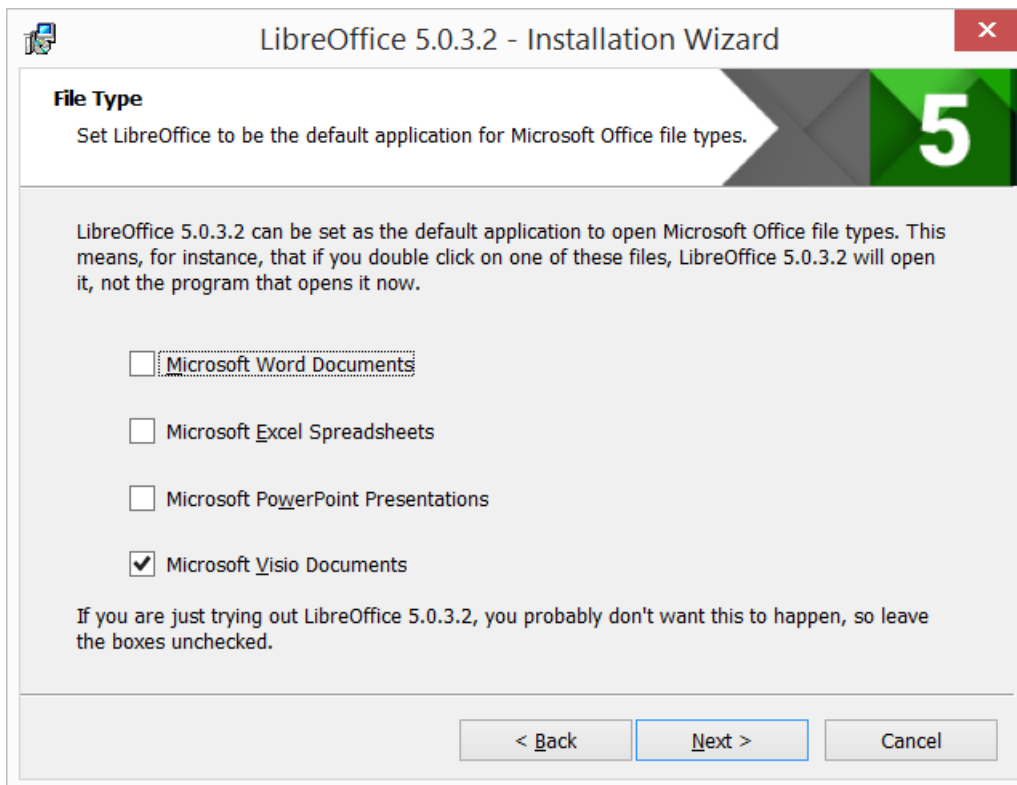
To install Hungarian, ensure that Hungarian has to its left the picture and “This feature will be installed on the local hard drive.



Once all required changes to the features have been completed, click “Next >”

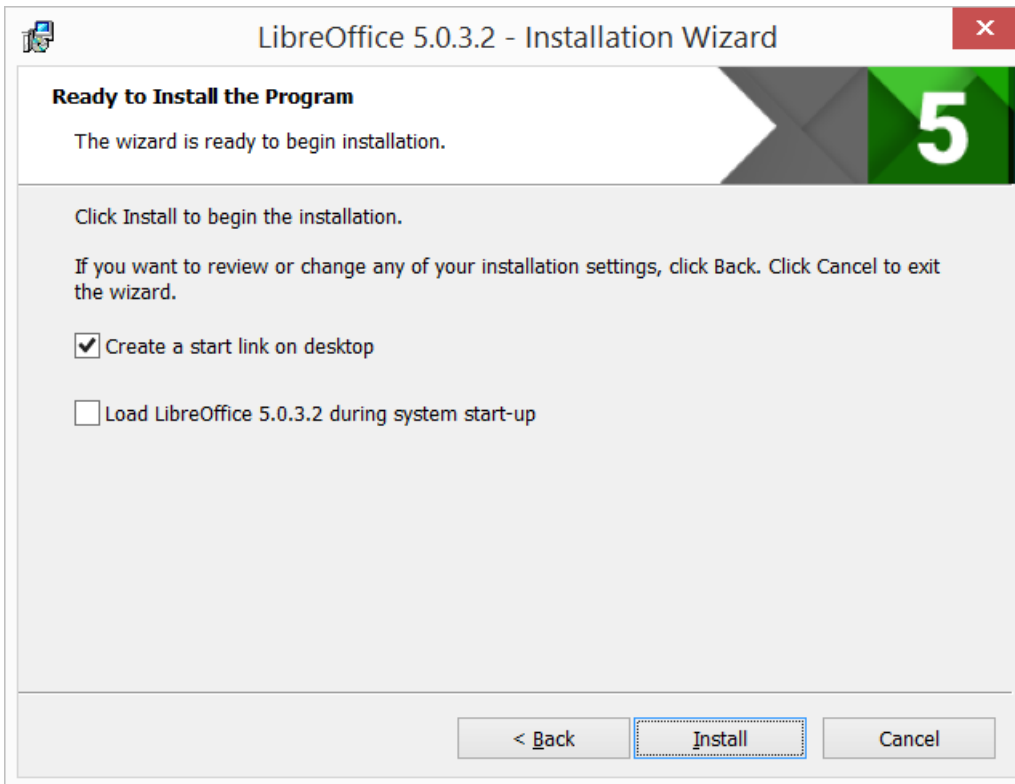
## 1.6 File Type

Another dialog box opens, inviting you to choose whether to open Microsoft Office documents with LibreOffice. By default, this feature is not enabled. If you want use LibreOffice to open Microsoft Office documents in future, put a checkmark in all four checkboxes.



Click “Next >”

## 1.7 Shortcut and Load during system startup

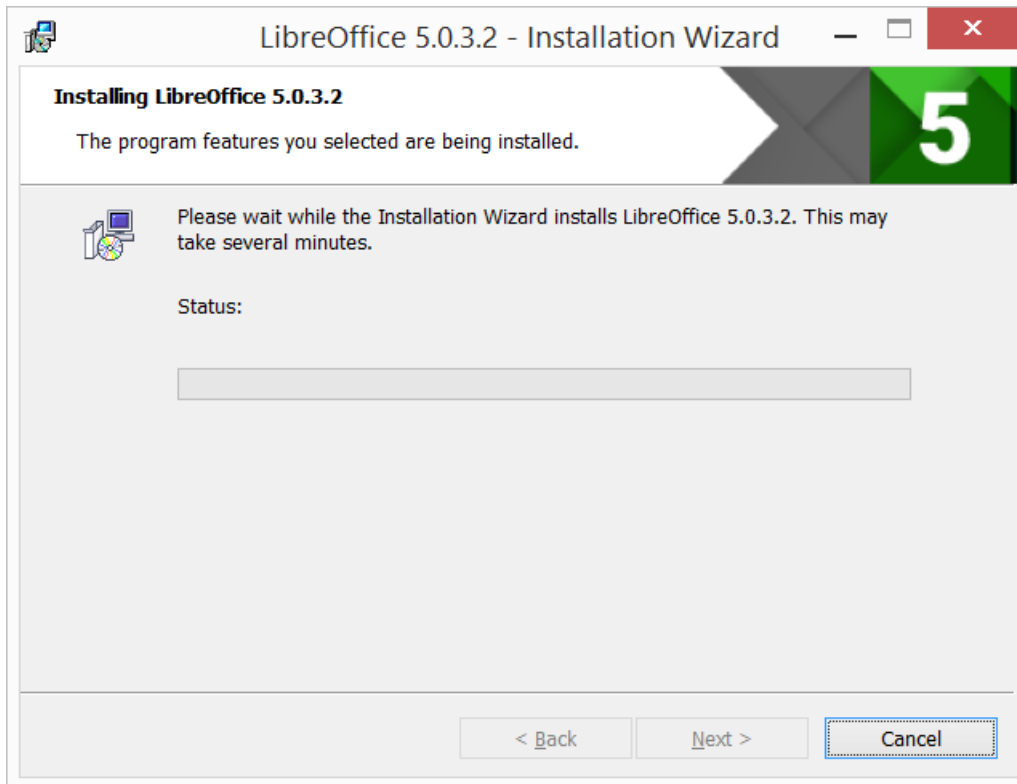


Another dialog box opens, asking you whether:

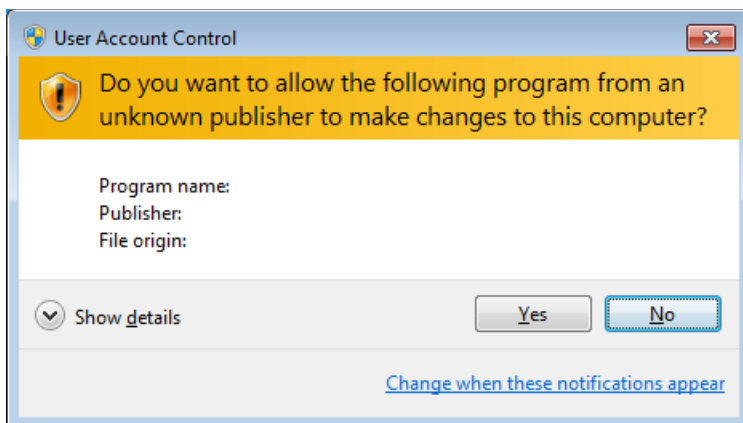
- A shortcut to open LibreOffice should be placed on your desktop. The default option is to create a shortcut.
- Load LibreOffice during system start-up.

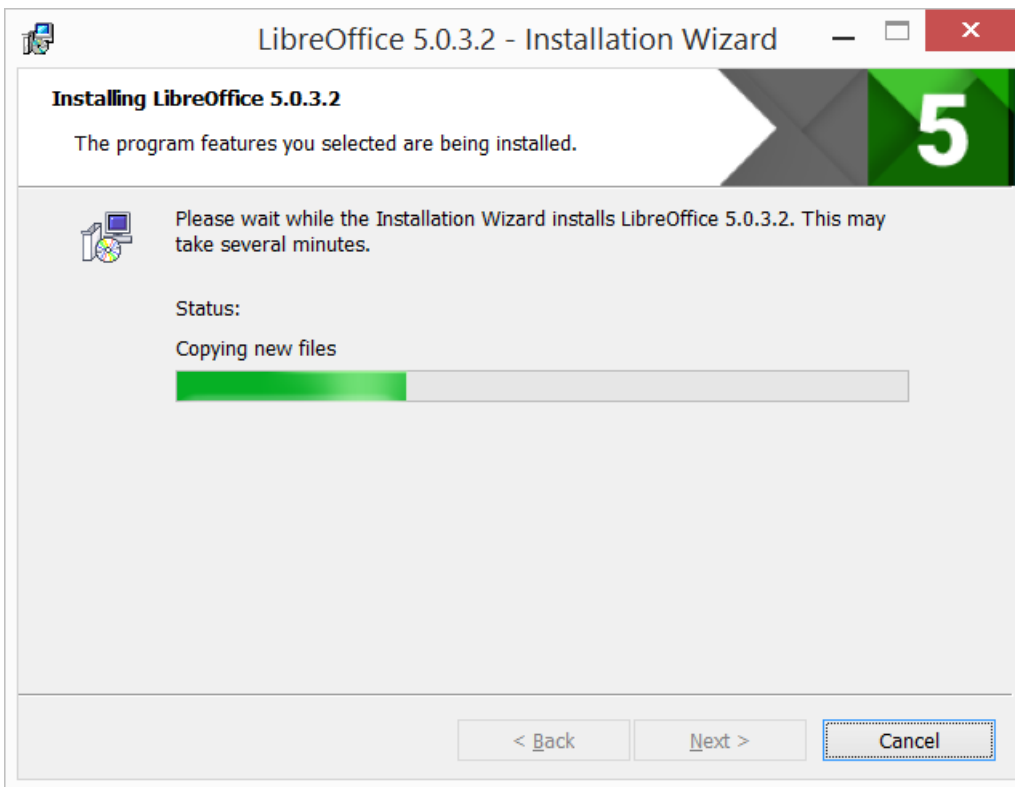
Make a choice and then press “Install”.

## 1.8 LibreOffice is installing

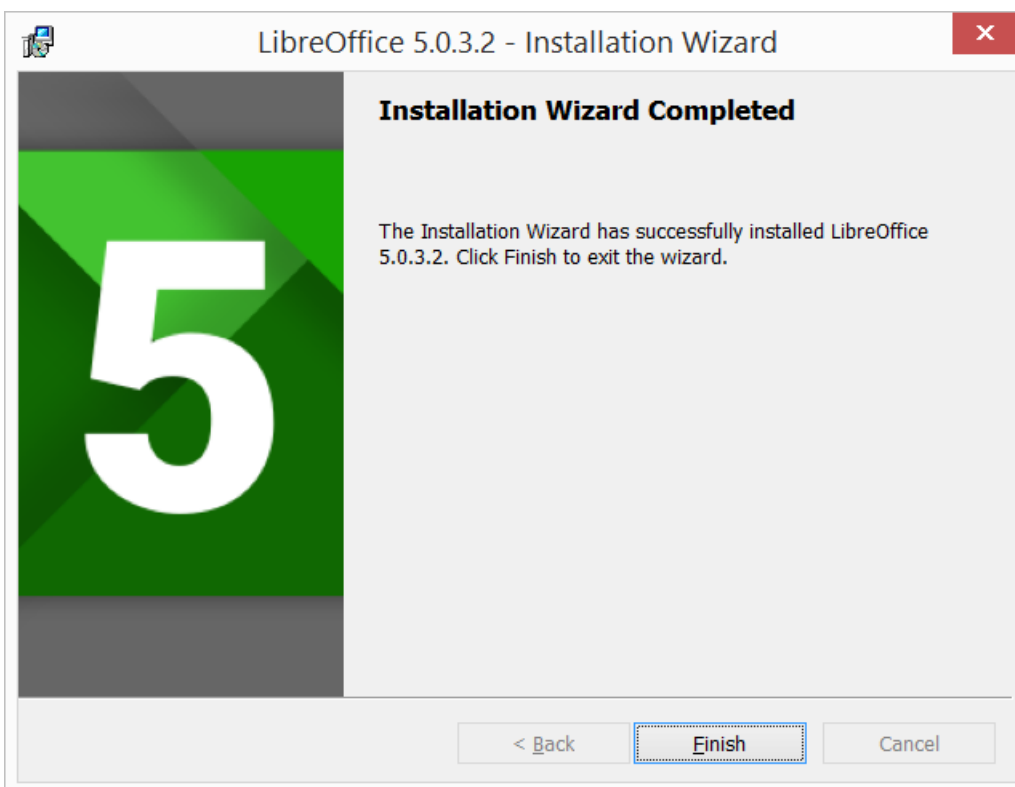


If the User Account Control dialog shows, click “Yes” to continue the installation.





## 1.9 LibreOffice Installation Completed



Click “Finish”

## 2. Built in Help

If you would like to use built in help, you will need to download and install the appropriate file.