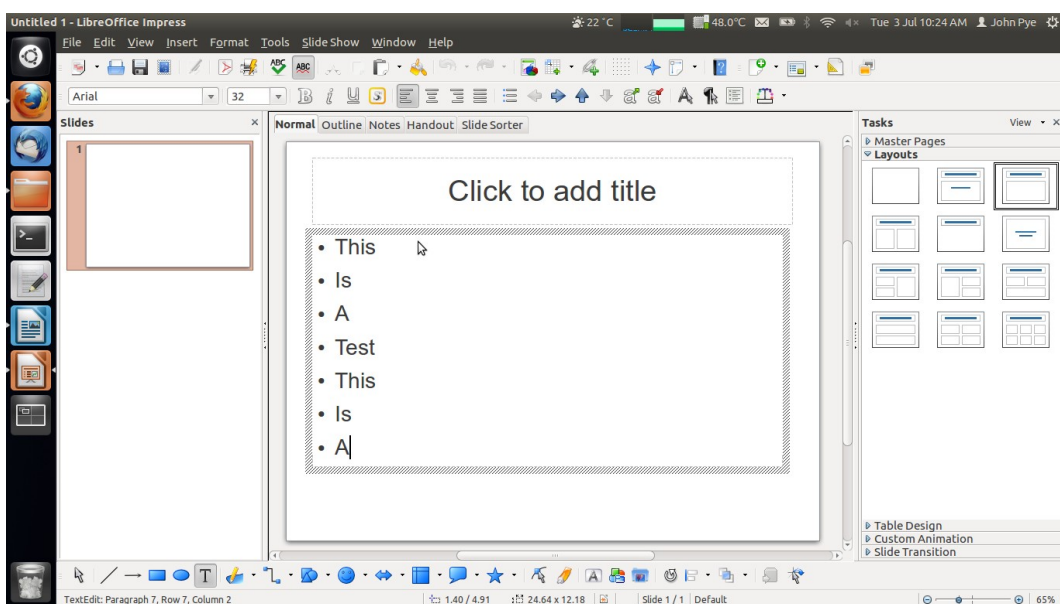
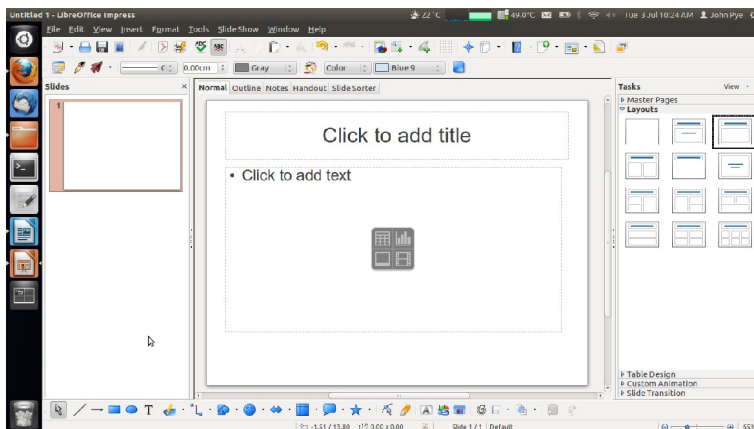
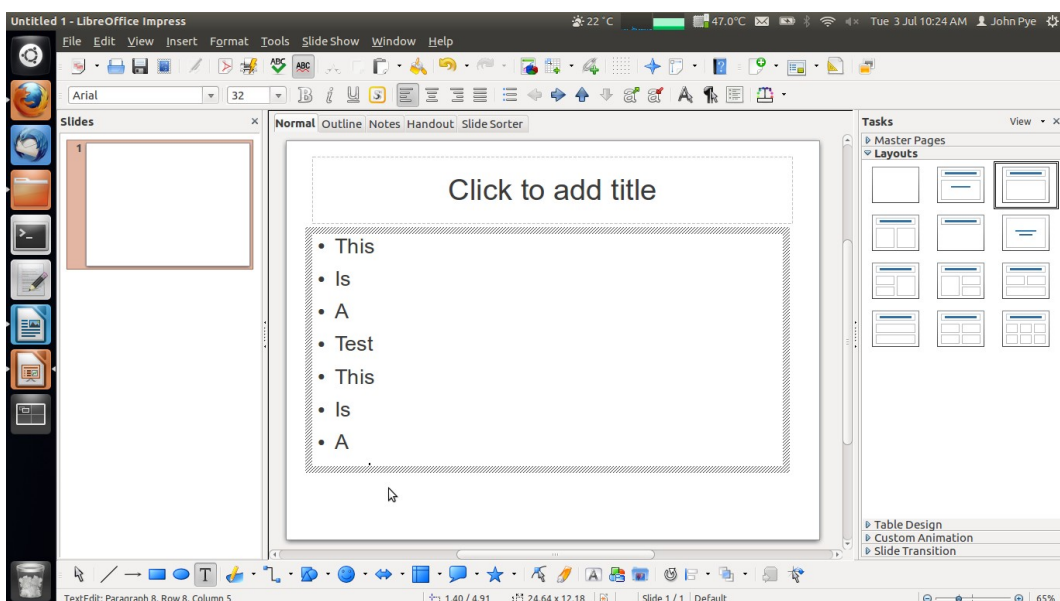


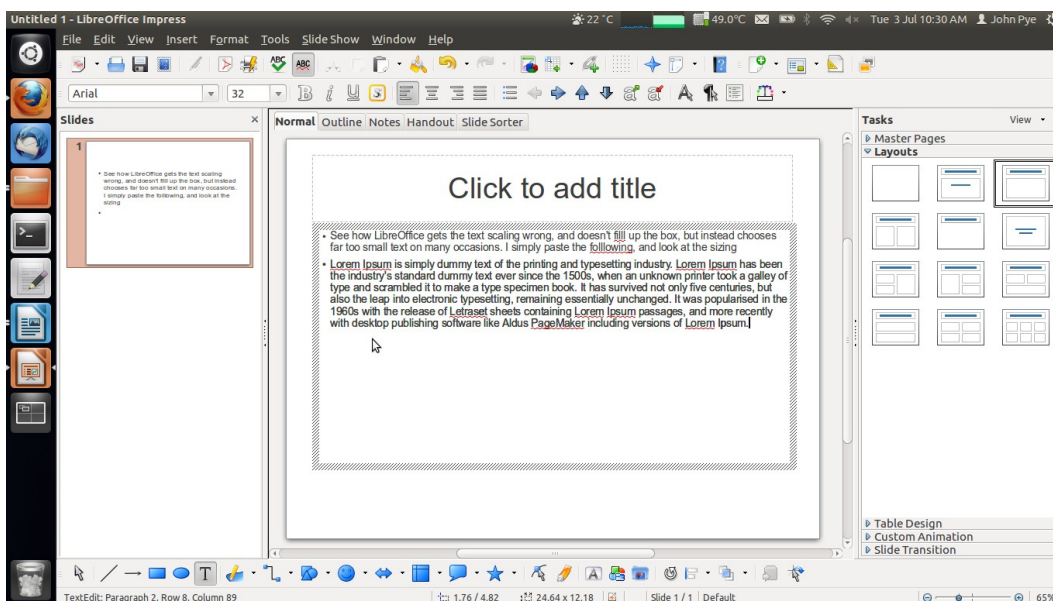
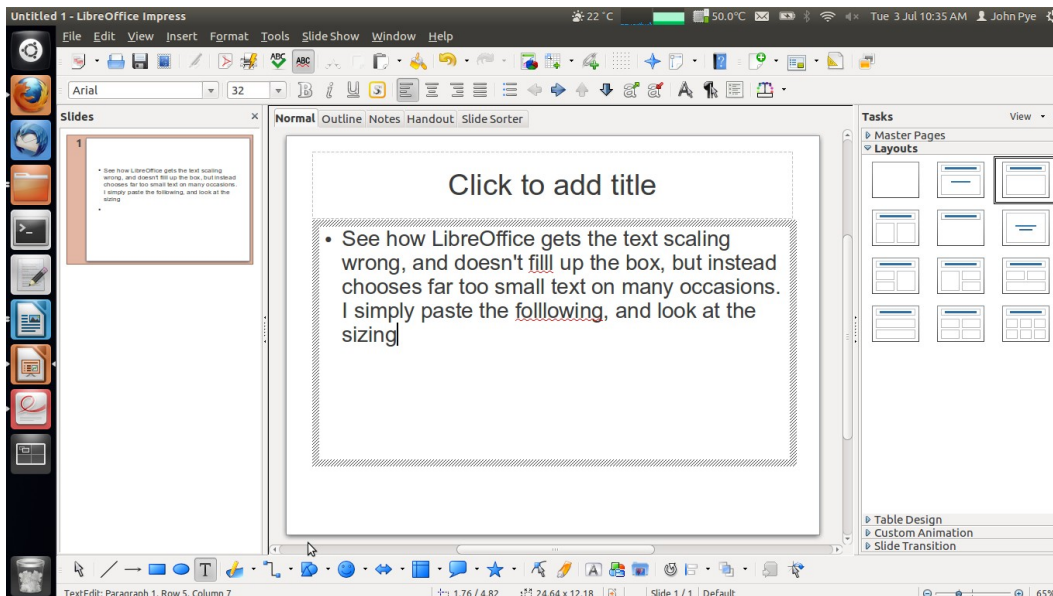
When simply typing lines, sometimes the cursor is not visible – it disappears off the bottom of the input box:



Notes that when I type the next “test” the text appears off the bottom of the textbox. You can just see the cursor poking out in the next image...



When adding a large paragraph, the text sizing is wrong in quite the other direction: it appears that the algorithm is determining that **more** space is required than really is required, with the result that the text is sized too small... read below:



Attempts to resize the text are thwarted by wrong 'auto-fit' sizing.

[https://bugs.freedesktop.org/show\\_bug.cgi?id=51679](https://bugs.freedesktop.org/show_bug.cgi?id=51679)

I would certainly be surprised if this hasn't already been reported, but it's so critical that it should be top priority for a patch release. Presentation is very hard to use for even the simplest things with this bug.