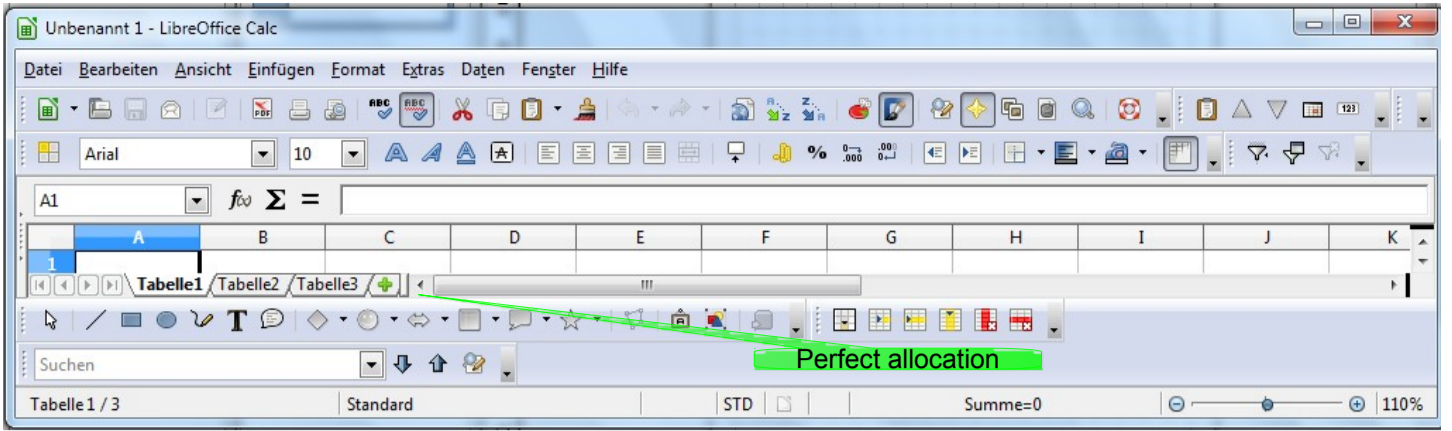
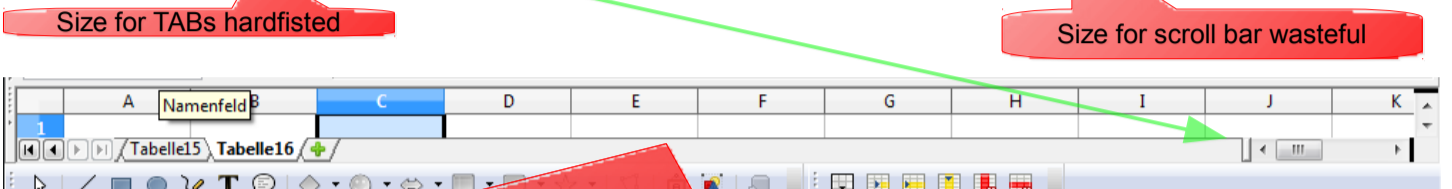
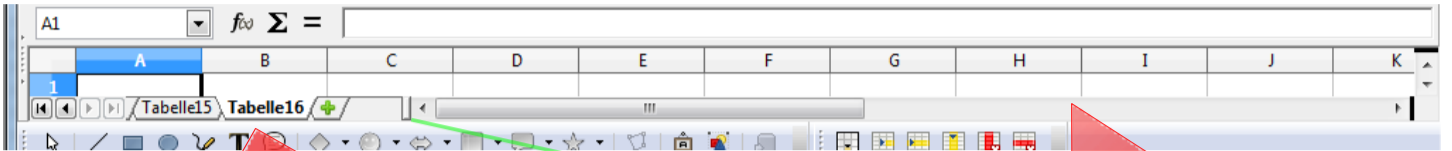


New document

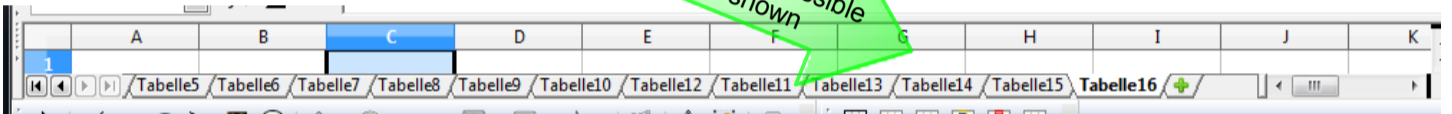


Lots of TABs have been added

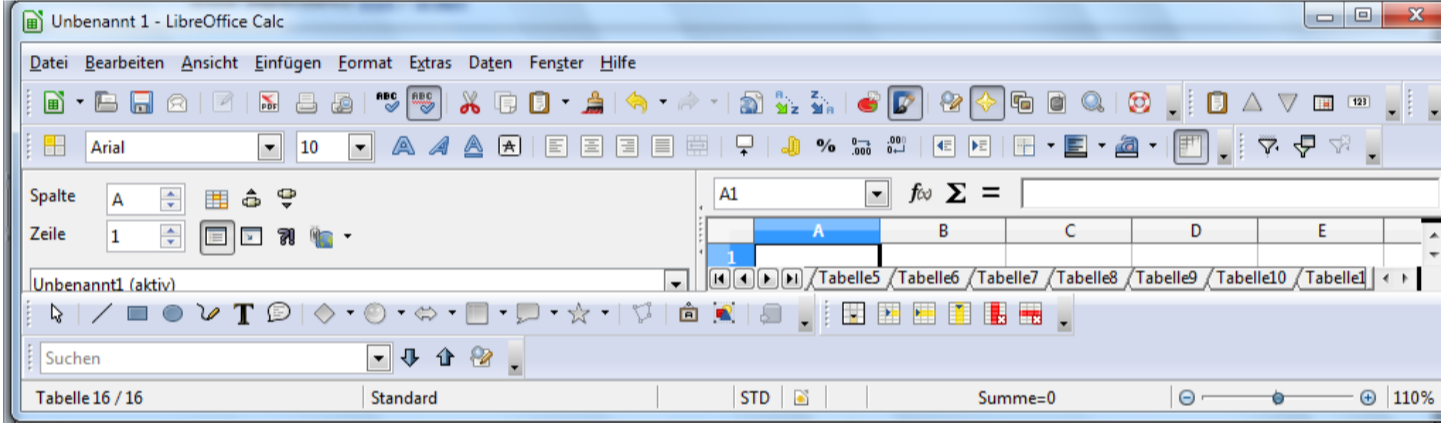


IMHO it's not userfriendly to waste thism room when Size of scroll bar has been reduced

As many TABs as possible should be shown



Activating big docked Navigator makes scroll slider unusable, and active TAB gets out of focus

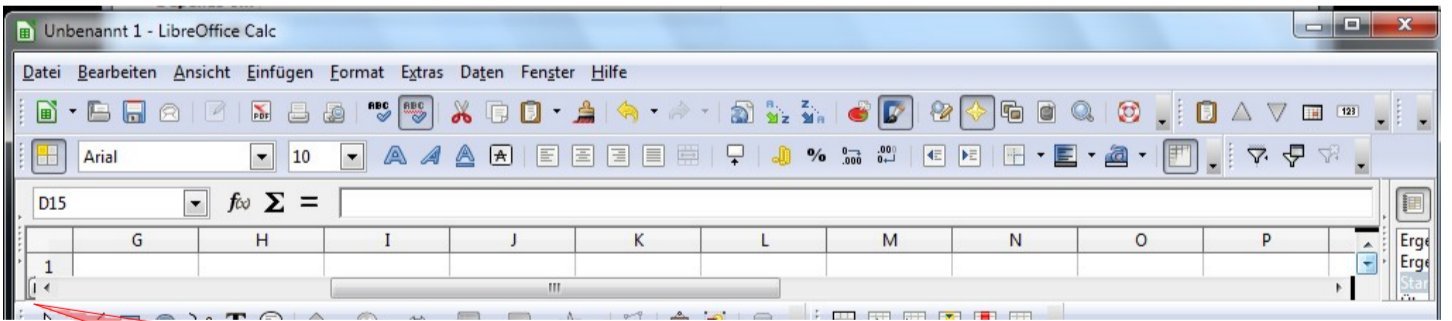


Result after activation of big docked Styles bar an then deactivated Navigator



Separator invisible, ugly covering of arrow ubttons

Not a useful allocation 0% / 100%



Reducing size of Styles bar only increases scroll slider