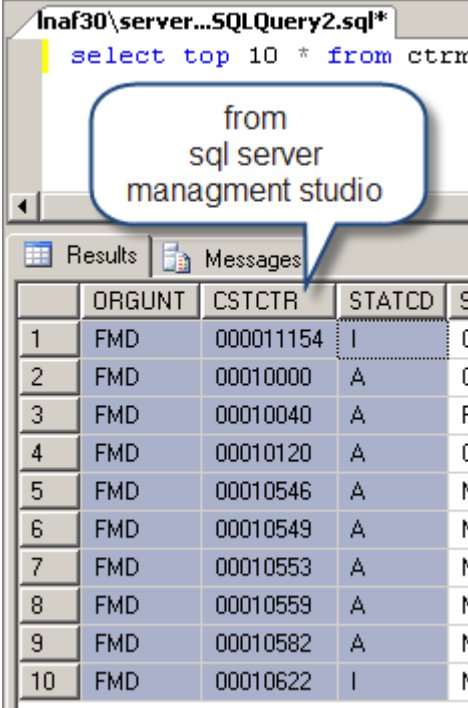


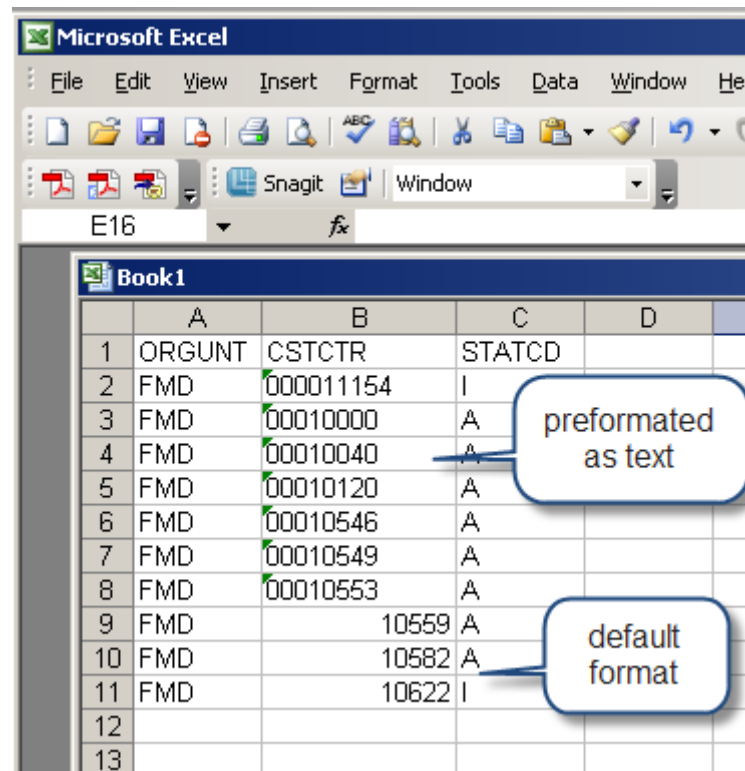
# Query data from ms sql



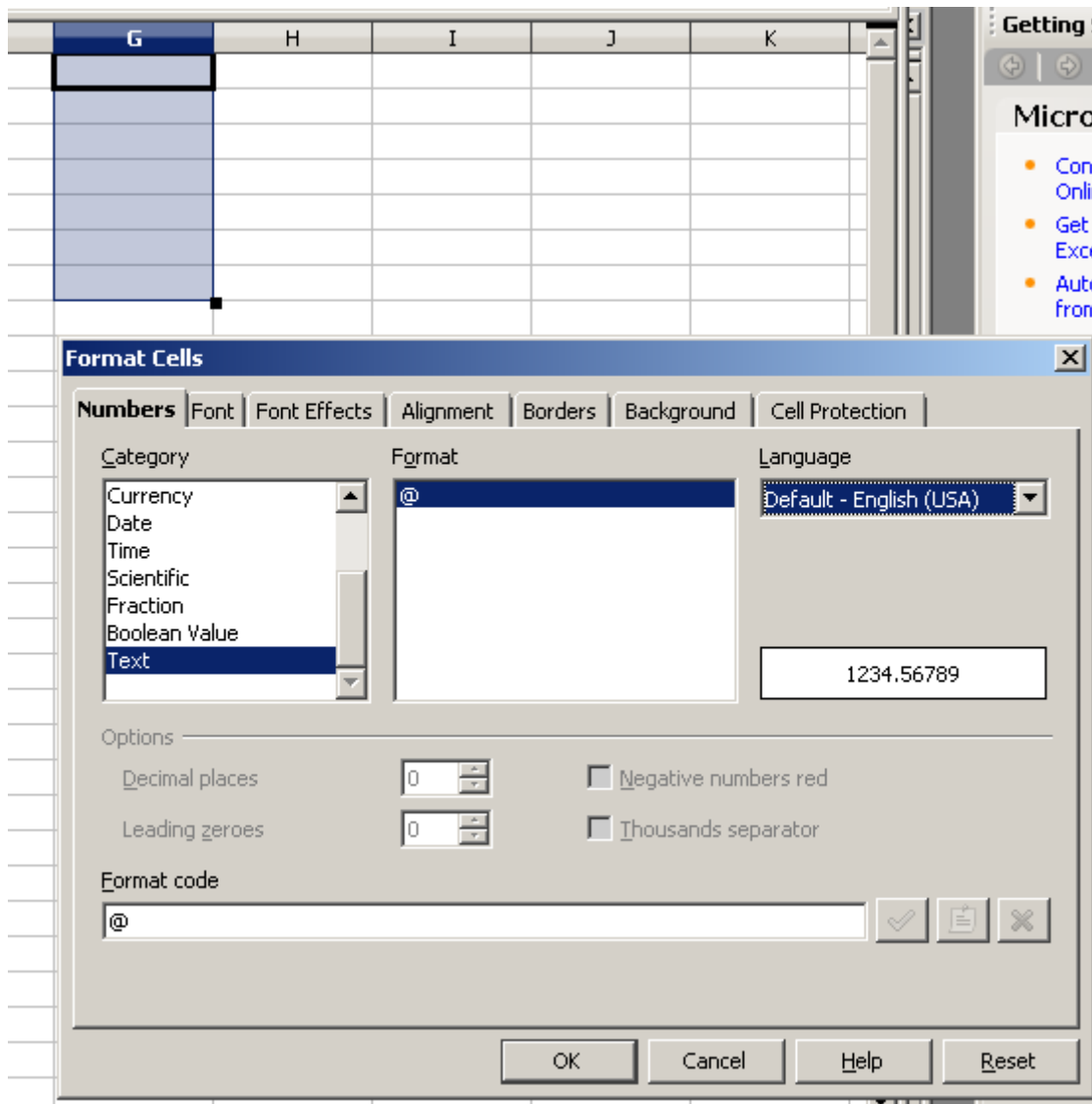
The screenshot shows a window titled 'lnaf30\server...SQLQuery2.sql\*' containing the SQL query: `select top 10 * from ctrm`. Below the query editor, a callout bubble contains the text 'from sql server managment studio'. The 'Results' pane displays a table with 10 rows and 5 columns: 'ID', 'ORGUNT', 'CSTCTR', 'STATCD', and 'S'. The first row is highlighted.

ID	ORGUNT	CSTCTR	STATCD	S
1	FMD	000011154	I	C
2	FMD	00010000	A	C
3	FMD	00010040	A	R
4	FMD	00010120	A	C
5	FMD	00010546	A	N
6	FMD	00010549	A	N
7	FMD	00010553	A	N
8	FMD	00010559	A	N
9	FMD	00010582	A	N
10	FMD	00010622	I	N

# Paste data into excel 2003



# Now with LO 3.4 – first preformat



# Start the paste, note settings

**Text Import**

Import

Character set: Unicode

Language: Default - English (USA)

From row: 1

Separator options

Fixed width

Separated by

Tab     Comma     Other

Semicolon     Space

Merge delimiters

Text delimiter: |

Other options

Quoted field as text

Detect special numbers

Fields

Column type: Standard

	Standard	Standard	Standard
1	ORGUNT	CSTCTR	STATCD
2	FMD	000011154	I
3	FMD	00010000	A
4	FMD	00010040	A
5	FMD	00010120	A
6	FMD	00010546	A
7	FMD	00010549	A

# And the results with LO3.4

F	G	H	
ORGUNT	CSTCTR	STATCD	
FMD	11154	I	
FMD	10000	A	
FMD	10040	A	
FMD	10120	A	
FMD	10546	A	
FMD	10549	A	
FMD	10553	A	
FMD	10559	A	
FMD	10582	A	
FMD	10622	I	

# Results side by side

Microsoft Excel

File Edit View Insert Format Tools Data Window Help

Snagit Window

E16

Book1

	A	B	C	D
1	ORGUNT	CSTCTR	STATCD	
2	FMD	000011154	I	
3	FMD	00010000	A	
4	FMD	00010040	A	
5	FMD	00010120	A	
6	FMD	00010546	A	
7	FMD	00010549	A	
8	FMD	00010553	A	
9	FMD		10559 A	
10	FMD		10582 A	
11	FMD		10622 I	
12				
13				

preformatted as text

default format

F	G	H	
ORGUNT	CSTCTR	STATCD	
FMD	11154	I	
FMD	10000	A	
FMD	10040	A	
FMD	10120	A	
FMD	10546	A	
FMD	10549	A	
FMD	10553	A	
FMD	10559	A	
FMD	10582	A	
FMD	10622	I	