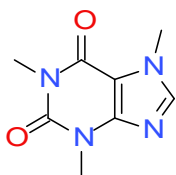


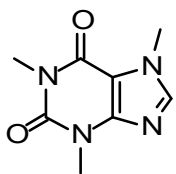
This file was created with MS word and contains four depictions of caffeine – three drawn with some of the most commonly used programs for chemical structures. The fourth depiction is in .png format. All four should be visible, regardless of your operating system and whether you have any of the chemical structure editors installed.

Please open the file with a 64bit Linux installation of LibreOffice e.g. under Fedora 15. For me, under Fedora only the fourth depiction is fully visible - the first two are just empty white boxes, the third only has lines, but no letters. Tested with both LibreOffice 3.3.3 OOO330m19 (Build:301) and the 9/21/11 nightly build (LibO-dev 3.5.0 Build ID: 47a101d-1e62dcb-7252360-6a3a910).

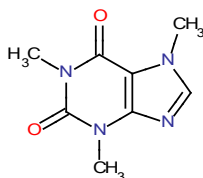
Accelrys Draw:



ChemDraw:



MarvinSketch:



Converted to .png (this is what you should see in the boxes above):

