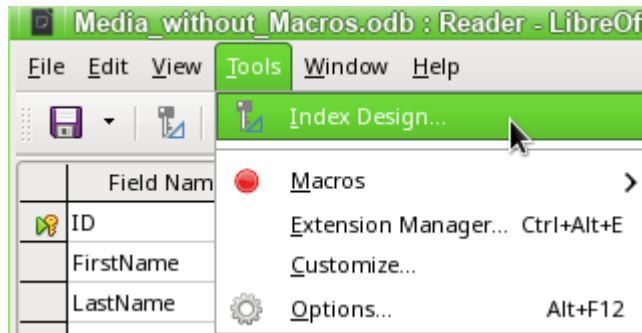
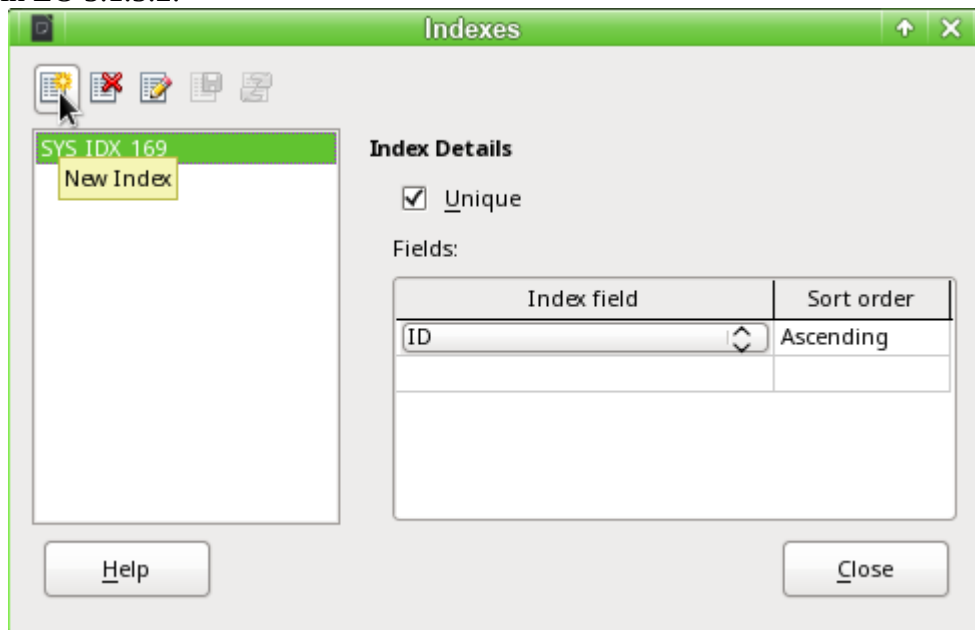


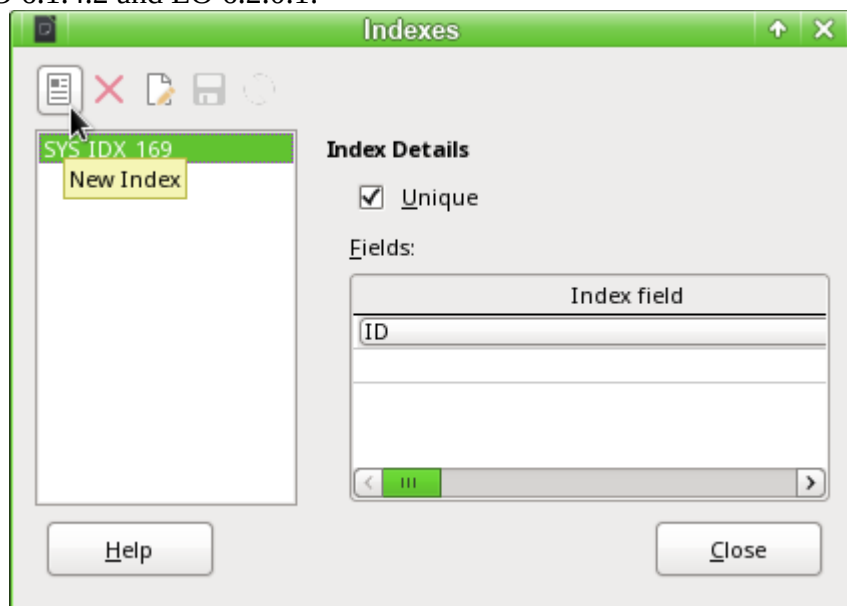
Open a Base file
 Open a table for editing, not input data.
 Choose „Index-design“:



You could now create a new index to some fields.
 So it looks in LO 5.1.5.2:



If you create an index you could choose the field for the index and the sorting order.
 So it looks in LO 6.1.4.2 and LO 6.2.0.1:



You could only choose the index field. The scollbar at the bottom doesn't change it. The dialog couldn't be sized.