

Filter WMF: fix for WMF images is not adopted by Slide Show mode (LO 6 Alpha 1 only)

The alpha1 build of LO 6 contains a fix for images of the WMF file format.

The attached test case „Test Case WMF in Slide.odp“ is a presentation with a WMF, which is affected by this fix.

If you just open this presentation, the WMF looks right, but if you start the Slide Show („Slide Show“ → „Start from first slide“), the WMF is shown messed up.

Version: 6.0.0.0.alpha1+ (x64)

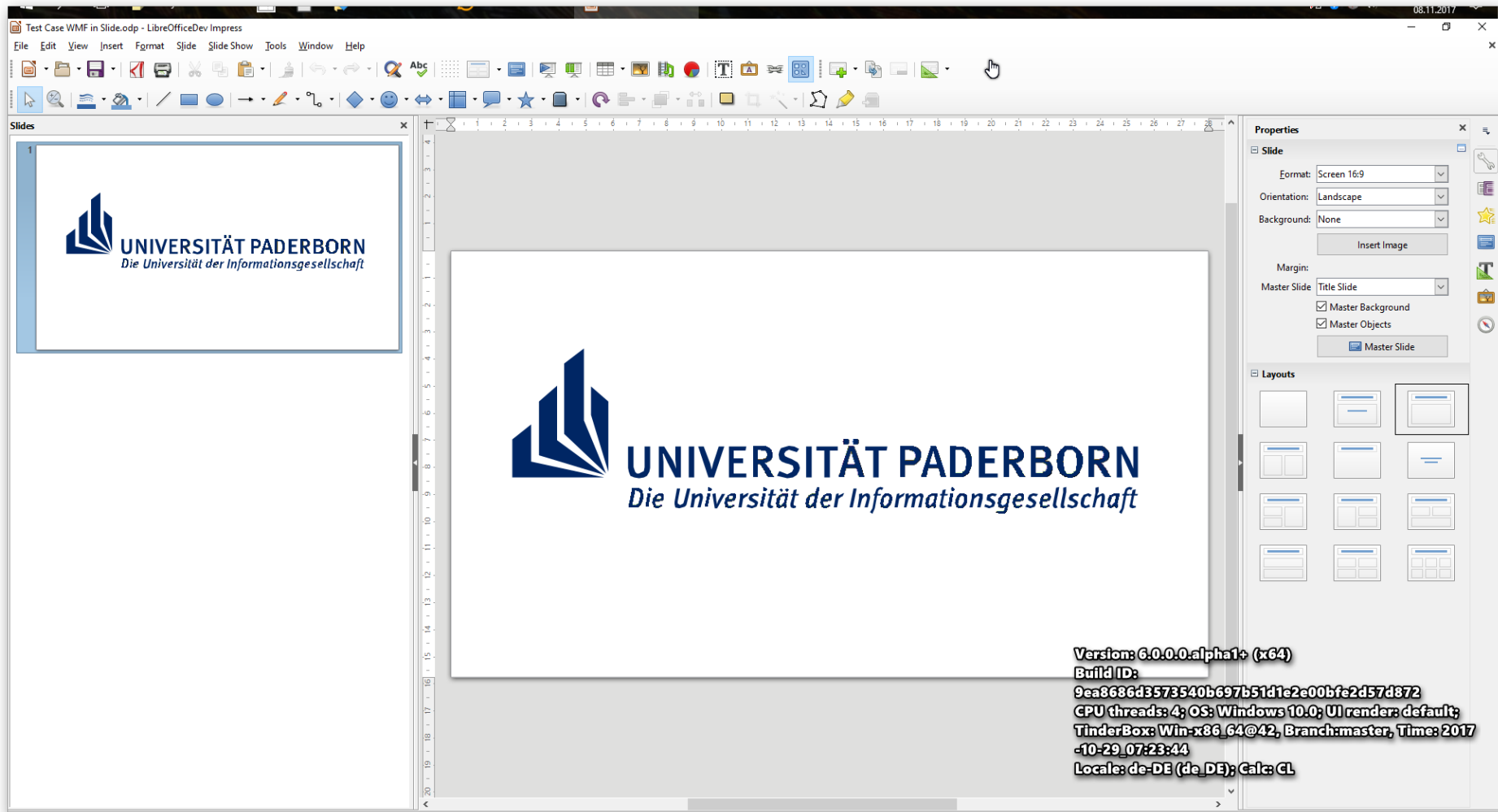
Build ID: a5af0fd9f27af42cf2e8571f659cdad6e606215b

CPU threads: 4; OS: Windows 10.0; UI render: default;

TinderBox: Win-x86_64@42, Branch:master, Time: 2017-11-07_00:30:02

Locale: de-DE (de_DE); Calc: group

1. Please open the presentation „Test Case WMF in Slide.odp“ that is attached to this bug report with LO 6 alpha1. (In earlier builds of LO 6 or LO 5 the issue with the logo is in Editing Mode and in Presentation Mode).
2. Click on the menu „Slide Show“ and then „Start from the first slide“.



3. The Slide Show starts and the logo (a WMF image) is messed up. The image is rendered the way it was rendered before the fix in LO6 Alpha1.



UNIVERSITÄT PADERBORN
Die Universität der Informationsgesellschaft