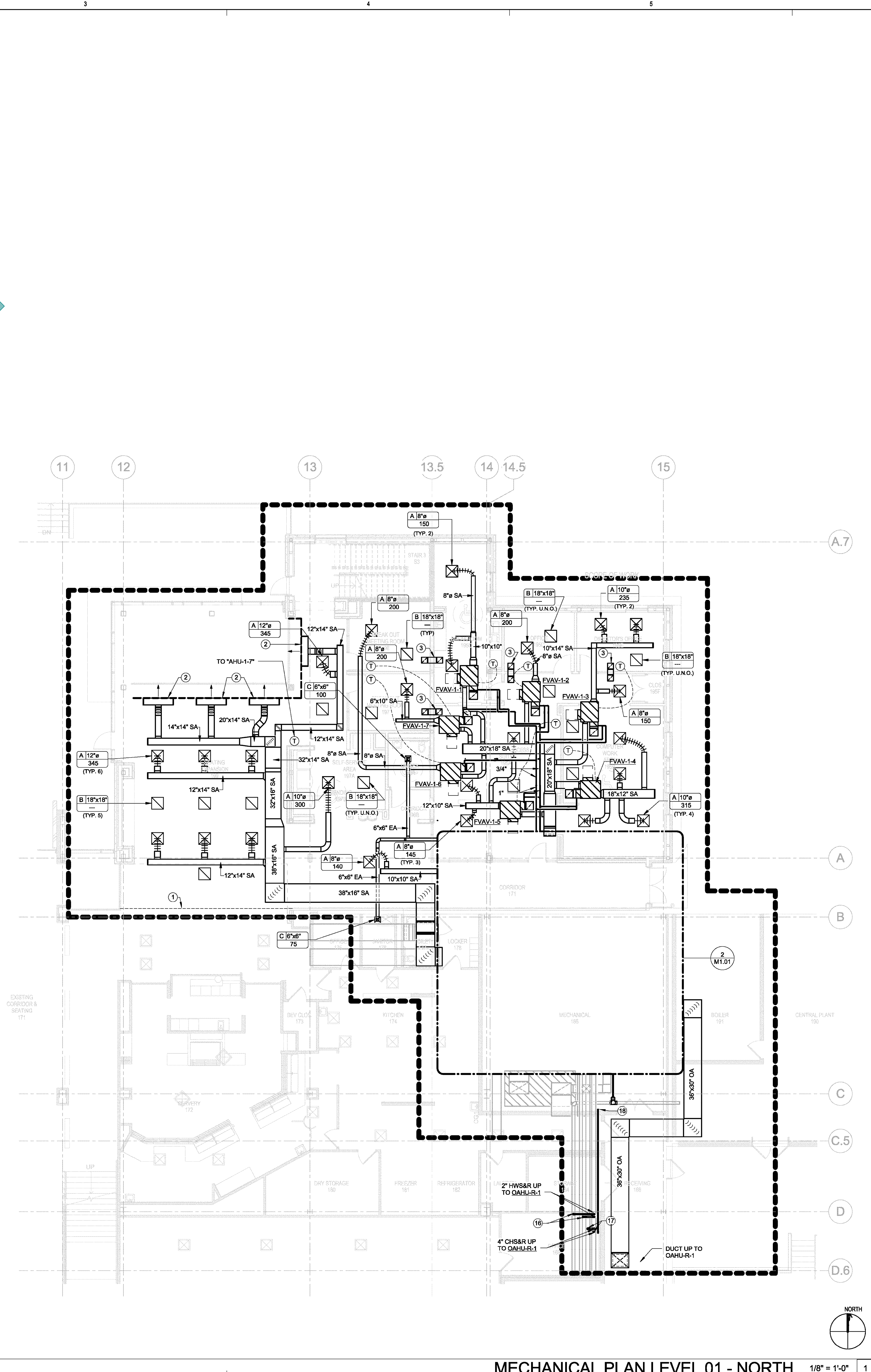


ENLARGED MECHANICAL ROOM 1/4" = 1'-0" 2



MECHANICAL PLAN LEVEL 01 - NORTH 1/8" = 1'-0" 1

GENERAL NOTES

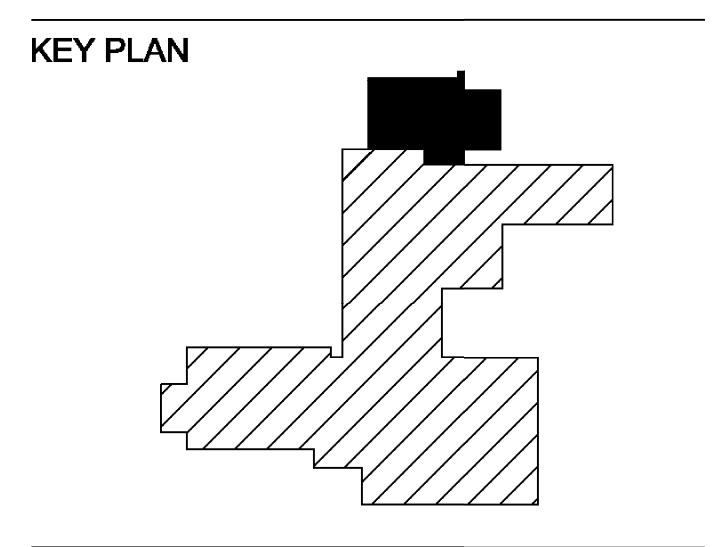
KEY NOTES

- 1 RELOCATE EXISTING AIR DEVICES.
- 2 NEW LOCATION FOR RELOCATED AIR DEVICE. BALANCE TO 600 CFM.
- 3 12"x12" RETURN AIR TRANSFER BOOT.
- 4 10"x10" OUTSIDE AIR DUCT DOWN TO RETURN AIR PLENUM OF AHU-1-6. PROVIDE MOTORIZED DAMPER TO REMAIN. BALANCE TO 3500 CFM.
- 5 EXISTING OUTSIDE AIR WITH MOTORIZED DAMPER TO REMAIN. BALANCE TO 1900 CFM.
- 6 EXISTING OUTSIDE AIR WITH MOTORIZED DAMPER TO REMAIN. BALANCE TO 3500 CFM.
- 7 EXISTING OUTSIDE AIR UNIT TO BE USED FOR SEATING EXPANSION SUPPLY AIR. UNIT SHALL REMAIN 9400 CFM FOR SUPPLY AIR. 1200 CFM OF OUTSIDE AIR SHALL BE SUPPLIED TO THIS UNIT FROM THE NEW OUTSIDE AIR UNIT ON ROOF.
- 8 DEMO EXISTING 78"x72" OUTSIDE AIR LOUVER AND SEAL WALL. REMOVE OA PLENUM AND 32"x32" DUCT TO UNIT.
- 9 CONNECT TO EXISTING DUCTS AS INDICATED. PROVIDE TRANSITIONS AS REQUIRED.
- 10 32"x32" RETURN. CONNECT TO EXISTING 32"x32" CONNECTION ON EXISTING UNIT.
- 11 REMOVE EXISTING PORTION OF 32"x30" OA TO POINT SHOWN. ROUTE NEW 32"x24" FROM EXISTING UNIT CONNECTION. TRANSITION AS REQUIRED.
- 12 CONNECT TO 10"x10" OA TO 28"x14" RETURN DUCT.
- 13 18" DEEP X INLET SIZE RETURN PLENUM.
- 14 HOT TAP EXISTING 6" HWS&R WITH 1 1/2" TAPS.
- 15 HOT TAP EXISTING 6" CHS&R WITH 1 1/2" TAPS.
- 16 HOT TAP EXISTING 6" HWS&R WITH 2" TAPS.
- 17 CONNECT 4" CHS&R TO EXISTING 6" MAINS.
- 18 2" CONDENSATE DRAIN LINE FROM OAHU-R-1. ROUTE TO NEAREST DRAIN.
- 19 6"x8" EXHAUST DUCT UP TO EF-1 ON ROOF.

WHR ARCHITECTS
 1111 Louisiana 26th Floor
 Houston, TX 77002
 T 713 665 5665 whrarchitects.com

COLLABORATIVE ENGINEERING GROUP
 8904 Fairbanks N Houston, Suite 201
 Houston, Texas 77064
 281.598.1170
 www.collaborative-eng.com
 Firm No. F12678

REVISIONS		
NO.	DATE	DESCRIPTION



STUDENT CONFERENCE CENTER

Lone Star College System
 20000 Kingwood Drive
 Kingwood, TX 77339

MECHANICAL PLAN - LEVEL 1 NORTH

PHASE: PERMIT/BID ISSUE
 DATE: 2016-01-11
 PROJECT NO: 2015026-000
 Copyright © 2015 WHR Architects, Inc.

1/11/2016 3:17:01 PM