

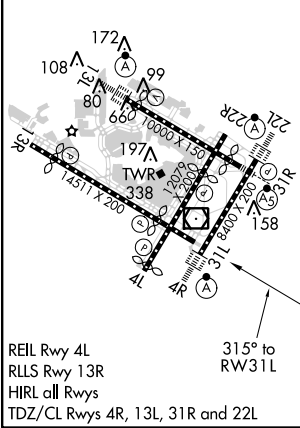
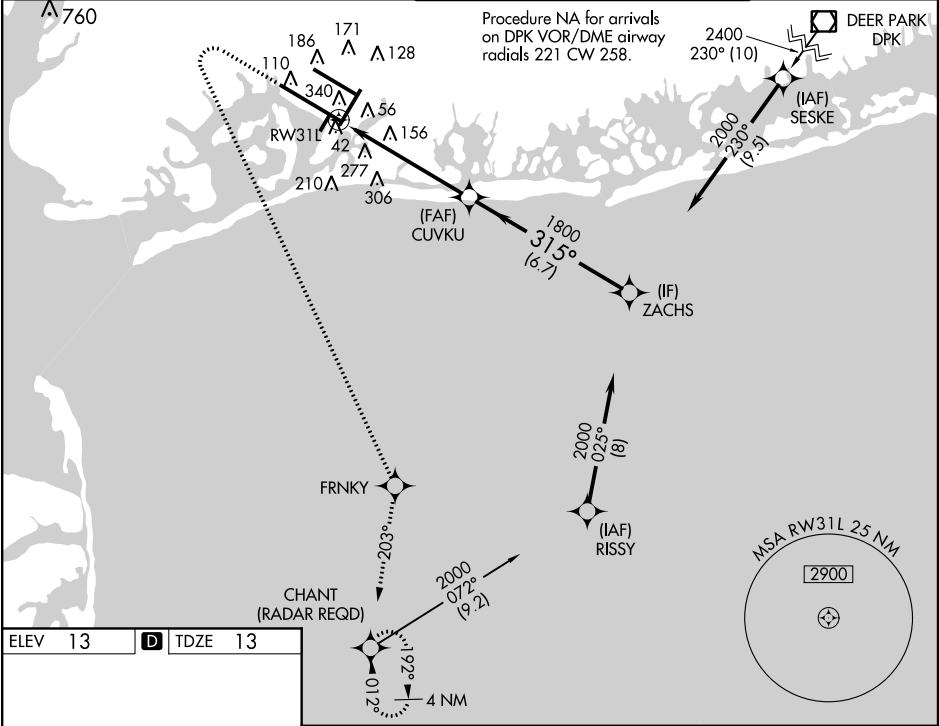
WAAS CH 50119 W31A	APP CRS 315°	Rwy Idg 11248 TDZE 13 Apt Elev 13
--	------------------------	--

RNAV (GPS) Y RWY 31L
JOHN F KENNEDY INTL (JFK)

▼ For uncompensated Baro-VNAV systems, LNAV/VNAV NA below -12°C (11°F) or above 54°C (130°F). Simultaneous approach authorized with Rwy 31R. DME/DME RNP-0.3 NA. Use of FD or AP providing RNAV track guidance required during simultaneous operations. LNAV procedure NA during simultaneous operations.

MISSED APPROACH: Climb to 500 then climbing left turn to 3000 direct FRNKY and on track 203° to CHANT and hold.

ATIS (ARR-NE) (ARR-SW) 128.725 117.7 115.4	NEW YORK APP CON 128.12 269.0	KENNEDY TOWER Rwys 4R/22L and 13L/31R 119.1 281.55 Rwys 4L/22R and 13R/31L 123.9 281.55	GND CON 121.9 348.6	CLNC DEL 135.05 348.6
---	---	---	-------------------------------	---------------------------------



500	3000	FRNKY	tr 203°	CHANT	VGSI and RNAV glidepath not coincident (VGSI Angle 3.00/TCH 67).
*LNAV only					
RW31L					
*1.6 NM to RW31L					
CUVKU					
ZACHS					
1800					
1800					
GP 3.00° TCH 51					
1.6 NM 3.9 NM 6.7 NM					
CATEGORY	A	B	C	D	
LPV DA	213/40 200 (200-¾)				
LNAV/VNAV DA	541-1¾ 528 (600-1¾)				
LNAV MDA	600/55 587 (600-1¾)		600-1¾ 587 (600-1¾)		
CIRCLING	640-1 627 (700-1)		640-1¾ 627 (700-1¾)		660-2 647 (700-2)

NE-2, 04 FEB 2016 to 03 MAR 2016

NE-2, 04 FEB 2016 to 03 MAR 2016