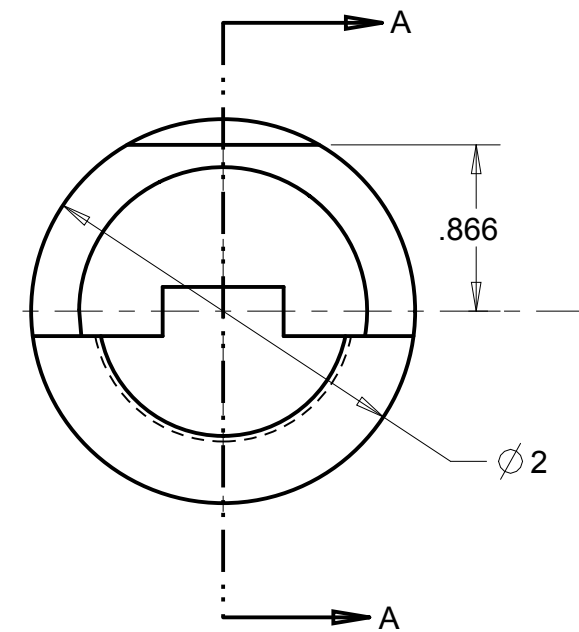
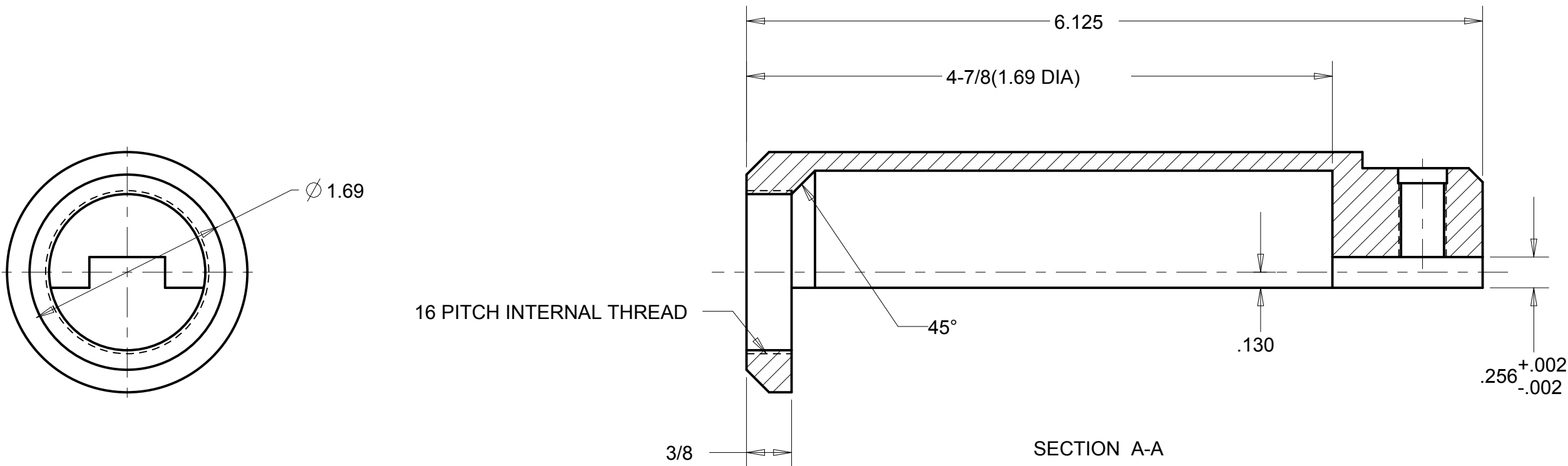
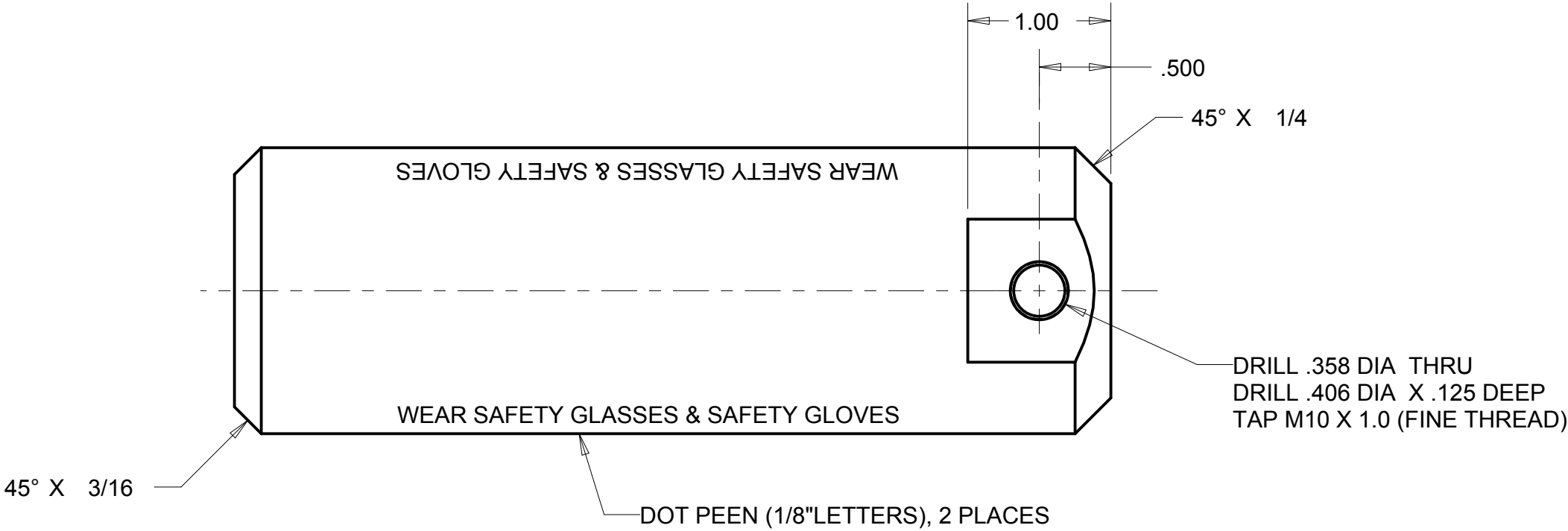
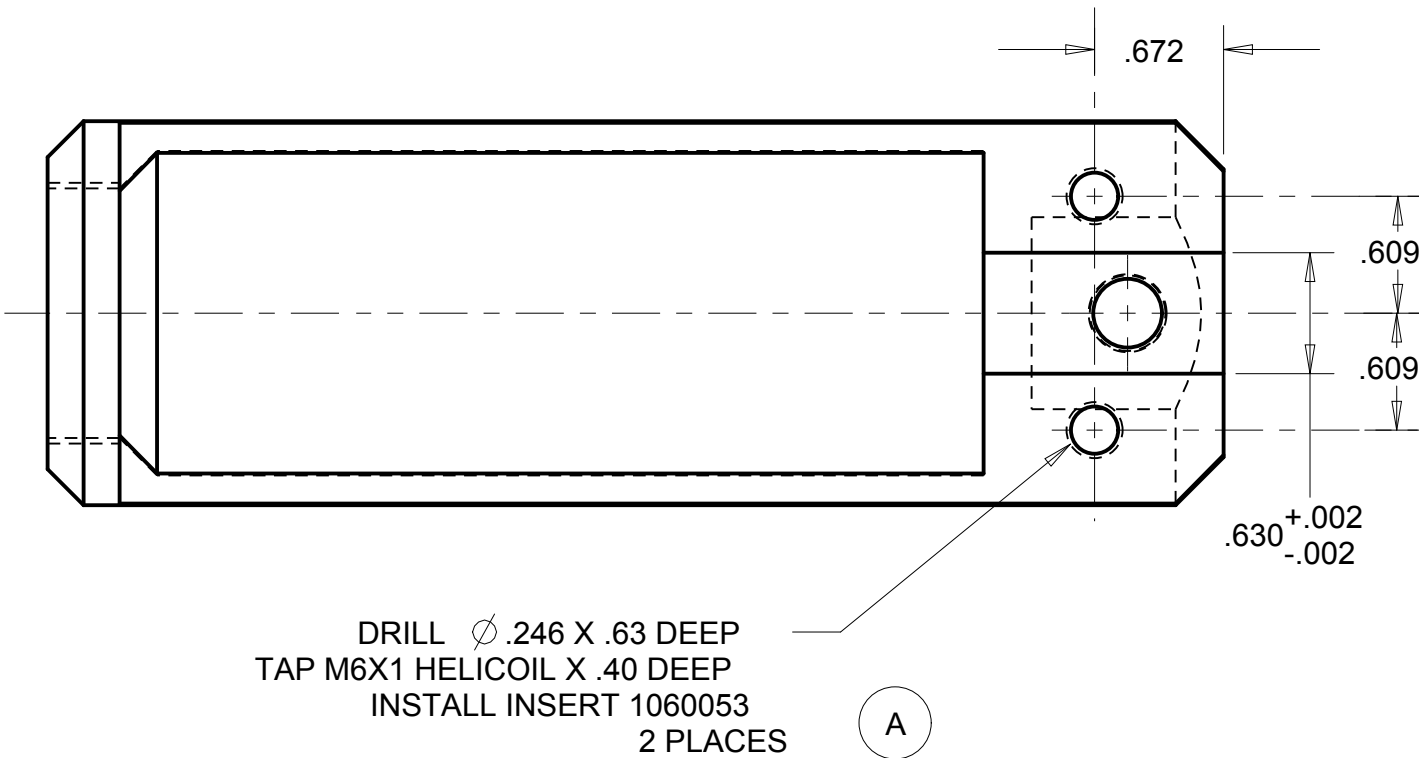


SYM	REVISION	DATE	DRN	CHK
A	ADDED HELICOIL AFTER M6 X 1 NOTE	7/19/01	KSS	
B				
C				
D				



THREAD DATA

MINOR DIA.....1.291/1.304
PITCH DIA.....1.317/1.324
MAJOR DIA.....1.358 MIN



INSTALL LABEL 1017159

THIS DOCUMENT IS THE PROPERTY OF JARVIS PRODUCTS CORPORATION AND IS DELIVERED ON THE EXPRESS CONDITION THAT IT AND THE INFORMATION CONTAINED IN IT ARE NOT TO BE USED, DISCLOSED, OR REPRODUCED IN WHOLE OR IN PART, FOR ANY PURPOSE WITHOUT THE EXPRESS WRITTEN CONSENT OF JARVIS PRODUCTS CORPORATION; AND THAT NO RIGHT IS GRANTED TO DISCLOSE OR SO USE ANY INFORMATION CONTAINED IN SAID DOCUMENT. THESE RESTRICTIONS DO NOT LIMIT THE RIGHT TO USE INFORMATION OBTAINED FROM ANOTHER SOURCE.

JARVIS PRODUCTS CORPORATION
MIDDLETOWN, CONN., U.S.A.

REMOVE ALL BURRS BREAK ALL SHARP EDGES MACHINED SURFACES 7/16			
TOLERANCES UNLESS OTHERWISE SPECIFIED		DATE 2/21/01	
0 - 6 INCHES		DRAWN EW	
.XX ± .010		APPROVED	
.XXX ± .005		DATE	
.XXXX ± .0005		SCALE 1.000	
6 - 12 INCHES		MODEL	
XX ± .020		TITLE	
.XXX ± .010		COVER, GRINDING WHEEL	
ANGLES ± 0 ° 30'		PART NO	
		1002501	
		SIZE C	
		DWG NO	
		REV A	