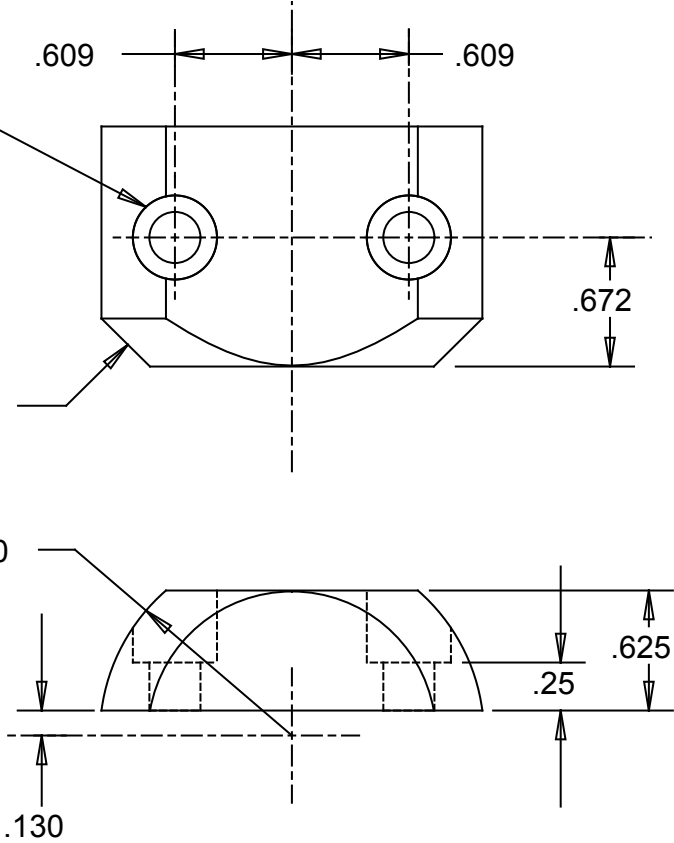
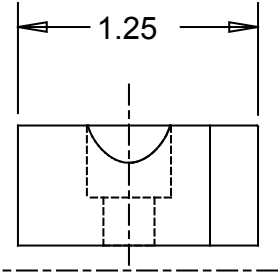


1002502

SYM	REVISION	DATE	DRN	CHK
A	MATERIAL WAS ALUMINUM	10/19/09	KSS	
B				
C				
D				

DRILL Ø .266 THRU
C'BORE Ø .438 DIA TO DEPTH SHOWN

CH'F 1/4" X 45°



THIS DOCUMENT IS THE PROPERTY OF JARVIS PRODUCTS CORPORATION AND IS DELIVERED ON THE EXPRESS CONDITION THAT IT AND THE INFORMATION CONTAINED IN IT ARE NOT TO BE USED, DISCLOSED, OR REPRODUCED IN WHOLE OR IN PART, FOR ANY PURPOSE WITHOUT THE EXPRESS WRITTEN CONSENT OF JARVIS PRODUCTS CORPORATION: AND THAT NO RIGHT IS GRANTED TO DISCLOSE OR SO USE ANY INFORMATION CONTAINED IN SAID DOCUMENT. THESE RESTRICTIONS DO NOT LIMIT THE RIGHT TO USE INFORMATION OBTAINED FROM ANOTHER SOURCE.

REMOVE ALL BURRS BREAK ALL SHARP EDGES MACHINED SURFACES \sqrt{V}		JARVIS PRODUCTS CORPORATION MIDDLETOWN, CONN., U.S.A.		
TOLERANCES UNLESS OTHERWISE SPECIFIED		MAT'L 2024 ALUN	DRAWN EW	DATE 2/21/01
0 - 6 INCHES .XX ± .010 .XXX ± .005 .XXXX ± .0005		STK SIZE	APPROVED	DATE
6 - 12 INCHES .XX ± .020 .XXX ± .010		HEAT TREAT	SCALE 1.000	MODEL
TITLE COVER, LATCH				
ANGLES ± 0 °30'		PART NO 1002502	SIZE A	DWG NO
				REV A

0 - 6 INCHES
.XX ± .010
.XXX ± .005
.XXXX ± .0005
6 - 12 INCHES
.XX ± .020
.XXX ± .010
ANGLES ± 0 ° 30'