

# Installing an ATI Radeon Graphics Card

## Introduction

Installing a new video card is a fairly easy process and should take approximately 30 minutes to complete. This guide is meant to help you with removing an old video card and installing your new ATI Radeon card. We recommend printing this document for your reference.

For this procedure, you will need the following tool:

- Philips screwdriver

## Removing Old Software

To ensure successful installation of your ATI graphics card, you must uninstall the graphic drivers for the existing graphics card before removing it from your computer.

With your current graphics card still in your computer:

- Close all applications that are currently running.
- Click *Start, Control Panel* and select Add/Remove Programs.
- Select your current graphic drivers and click *Change/Remove*
- \*The Wizard will help you remove your current display drivers.
- The computer should be shut down after the drivers have been removed.

\*If the previously installed graphics card has any additional software installed, they may also need to be removed at this point. (For example DVD Player, Multimedia applications, etc.)

## Removing Old Hardware

NOTE: If you do not have a previously installed add-in video card or your previous graphics card was included on the motherboard (eg. onboard video, integrated video), you can skip this step and move on to the new AGP card installation.

*If your computer has an on-board graphics capability, you may need to disable it on the motherboard or in the motherboard's BIOS settings. For more information, see your computer or motherboard documentation.*

- Disconnect all cables from the back of the computer
- Remove the left side of the computer case
- Lay the computer on a hard flat surface so that the open side is pointing up

- Unscrew old video card from the mounting bracket
- Press down on AGP lock to unlock the card from the slot (see picture for example)



*Example of an AGP lock (locked position)*

- Slide the card out of the AGP slot and remove it from the computer



*Slide the card out of its slot*

## Installing the ATI Hardware

- Align the video card with the free AGP slot and press down firmly. Stop when you feel the card is not going in any further or the AGP lock locks in place.



*Align the card with the AGP slot*



Press down firmly

- Screw the card to the case at the metal bracket near the back of the case. Ensure that the card is secure and the AGP lock, if present, is in its locked position.

*NOTE: Some newer model video cards will require that you connect a power cable from the power supply to the video card. If your power supply has an extra power connector, use this. If your power supply does not have an extra or unused power connector, you will need to use the supplied Y cable adapter that came with your new card (if applicable). This adapter splits a power connection from a hard drive or CD ROM into one that can go to your video card and another to go to the CD ROM or hard drive. If your power supply has an extra power connection, you should use this instead of using the power adapter cable.*

- Replace the computer's case side and reconnect all of the other cables. Start the computer.

## **Installing the Drivers/Software**

These instructions pertain to customers using Windows XP SP1 or higher or Windows 2000. It is highly recommended that you disable any antivirus, anti-spyware or any other system protection software before continuing.

Please visit <http://support.ati.com> to download the most current versions of the drivers for your product, before proceeding. You will need to have your product registered and you will need to be logged into the Customer Care website to see the downloads for your product.

Once you have registered your product to your account and have logged in to the Customer Care website, please use the category links on the left side of the webpage and follow these steps to take you to the downloads for your product:

- Click Drivers and Software
- Select your operating system
- Select your product
- Driver and Software downloads will appear in links on the right side of the page

## Installing the .NET Framework

The CATALYST Control Center requires Microsoft .NET Framework prior to installation. The CATALYST Control Center is an application that allows you to control the configuration of your ATI product. You can verify that you have the .NET Framework by checking in the Add/Remove Programs list in the Control Panel. If the .NET Framework is not listed, please download and install it before proceeding.

## Installing the Display Driver with Catalyst Control Center

There will be two versions of the driver on the download page, one with Control Panels and one with Catalyst Control Center. These are the applications that allow you to control the settings of your ATI product.

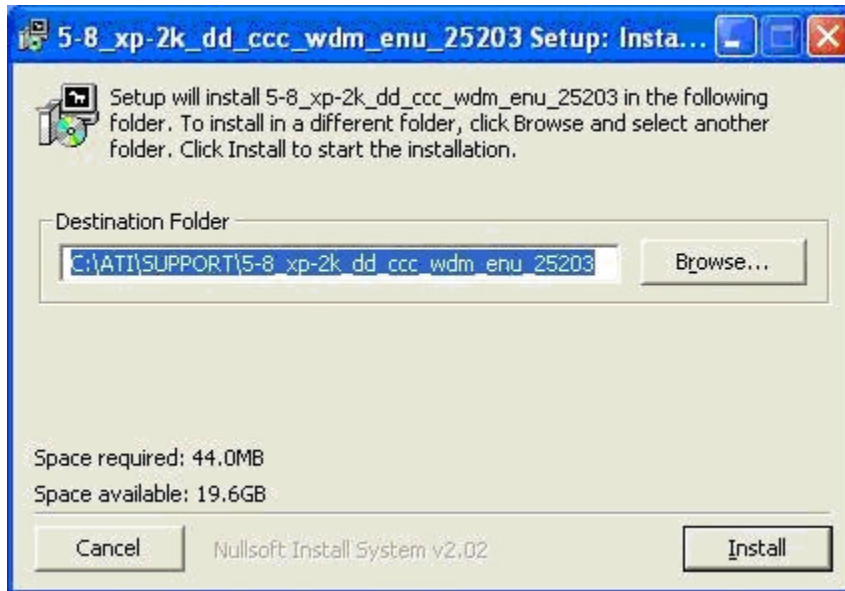
It is recommended that you install the driver package with the Catalyst Control Center as support for the version with Control Panels will be retired shortly. The Catalyst Control Center offers a host of new and exciting features that will enhance performance and usability.

Once you select one of the two packages that are offered, click on the link to begin the download. Be sure to save the downloaded file to your desktop when prompted. Once the file is downloaded follow the directions below.

- Double-click on the downloaded driver file. Windows XP Service Pack 2 users will see this dialog box. Click *Run* to start the install process.

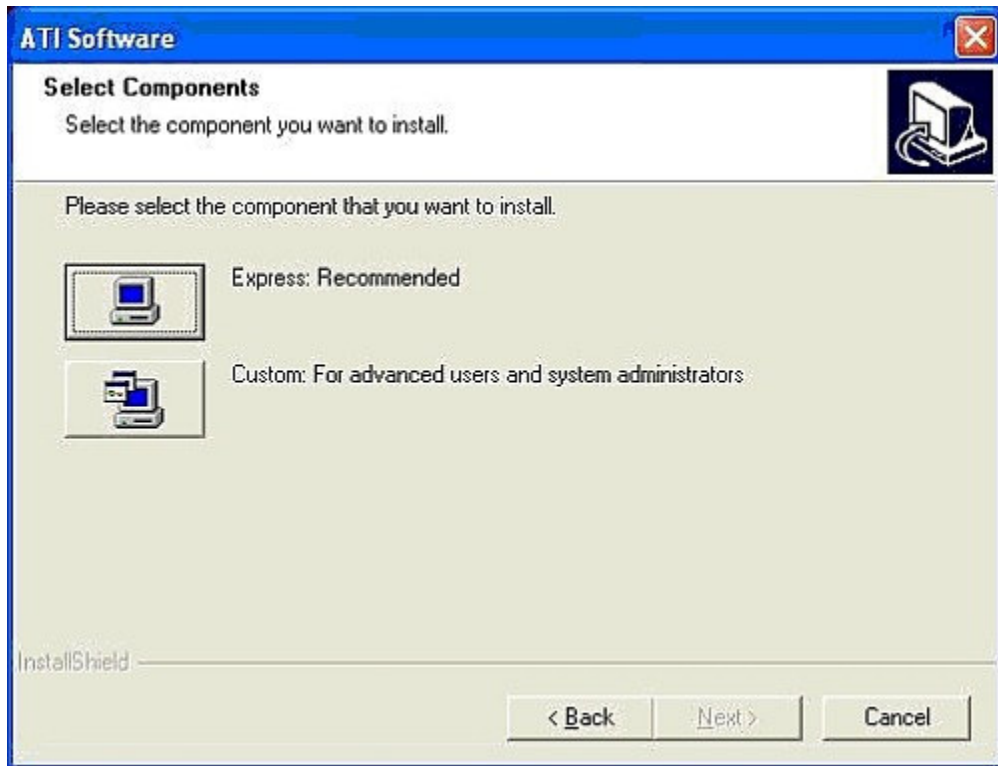


Use the default directory for extracting the files and press the *Install* button.



At this point the driver will start the extracting process before the actual system install begins.

- Click *Next* on the first install screen
- Click *Yes* to the *License agreement*
- Click the *Express* button.



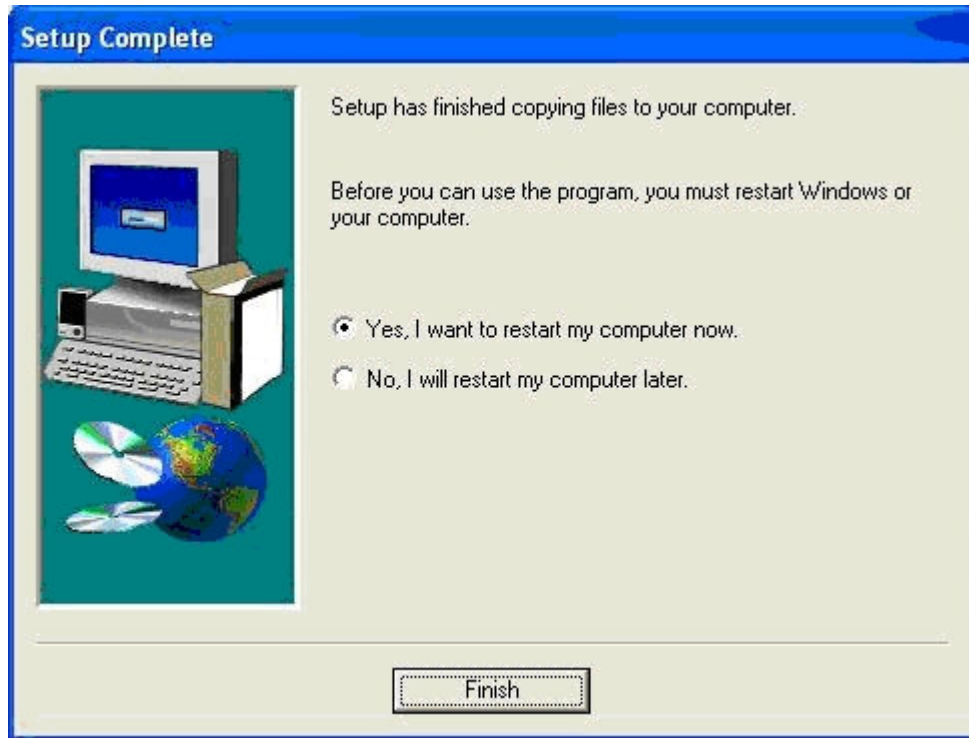
The installer will start to load the display driver first.

Next you will see the WDM Capture drivers load (for VIVO or All-In-Wonder)

The Catalyst Control Center setup will start shortly after.

A dialog box will indicate the install progress

- Click *Finish* to restart the computer.



This concludes the installation of the display driver. For customer with a RADEON product no other steps are necessary, you are done. Enjoy using your ATI product!