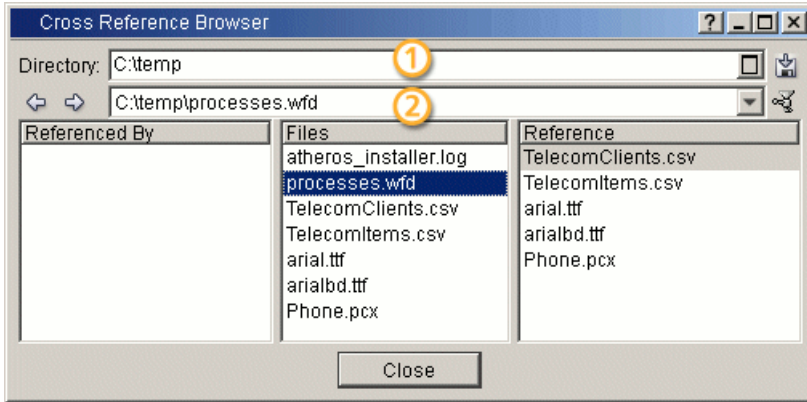
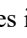




Cross Reference Browser


The Cross Reference Browser dialog enables you to find out which files a particular file refers to; or which files refer to that file. This is useful for revealing references between .WFD files and Used files (e.g. pictures, fonts, data files, external workflows).



Options Description

Directory The first field (1) selects a directory containing files for which you want to display references. Use the **Hide not referenced** icon  to filter out those files in the selected folder which do not refer to any file or are not referred to by any file, so that the list is easier to understand.

The second field (2) displays the path to the file that you have clicked on in the **Files** field. Use the arrows   to move forward or backward in the sequence of files that you have recently clicked on. If you open the drop-down menu, the selection history will be displayed.

 **Save** Saves the reference structure as a .DOT file. This file can be used by **AT&T's Dot tool** [<http://www.graphviz.org/Download..php>] for drawing a graphical representation of the reference structure.

Besides the Dot tool's GUI, you can also use the following command line to create the output graph: `dot file.dot -Tpng -o file.png`

Referred by Displays a list of files which refer to the file selected in the **Files** field.

Files Displays a list of files that are contained in the directory specified in the **Directory** field plus all of the files (located on any drive) referred to by any .WFD file in this directory. Clicking on a file from this list shows to which files this file refers (**Reference** field) or by which files this file is referred to (**Referred by** field).



Note:

If you double-click on a .WFD file from the list, it will be opened.

Reference Displays a list of files to which the file selected in the **Files** field refers.